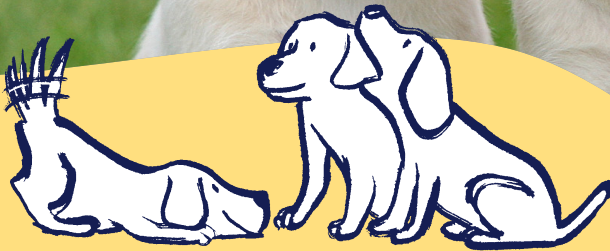


In aid of



The Guide Dogs Puppy Appeal

Training pups to become
life-changing guide dogs

Every year around 1,350 puppies start their journey to become a guide dog.



And we need your help to turn these pups into life-changing guide dog partnerships.

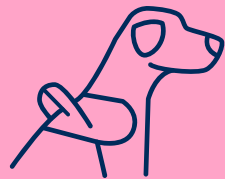
The guide dog service receives no government funding, we rely on donations to continue our life-changing work. By joining the pack, you can help us breed, puppy raise and train each guide dog so that they can transform the life of someone with sight loss.



£9 could support a working guide dog partnership for a day.



£31 could pay for an hour of specialist training for a guide dog.



£100 could buy a training school kit, essential to help every pup on their journey to becoming a qualified guide dog.

Tail-wagging ways to fundraise

Fundraise any day this October, any way you like! You may already have a plan, but here's a few of our favourites.

Sponsored puppy walk

Step up with family, as a school, or with your dog – all ages can get involved. Pick your distance, plan your route, and ask for sponsorship. Whether you walk every day or as a one-off, every step counts.



Wear it bright

Organise a dress down or wear it bright day – just like the high-visibility colours on our iconic guide dog harnesses. Ask for £1 to take part and your fundraising total will soon start adding up.



Bake a difference

Raise funds the delicious way – host a coffee morning, bake sale, or a potluck lunch. Whether you're serving up sweet treats or savoury bites, fundraising with food is a delicious way to bring people together.



Sweepstake

Tempt everyone to part with their cash by playing our puppy sweepstake game. We'll provide the sweepstake and collection box to collect the suggested donations of £2 a guess. A paws-ively easy way to fetch donations.



We're with you all the way



Our expert team across the UK are on hand to help with:

- Fundraising advice and support.
- Any additional fundraising resources you may need.
- Ideas about future fundraising opportunities and more ways you can support turning our pups into partnerships.

Pay in your fundraising

You can pay in the funds you raised online at guidedogs.org.uk/payin



By card

Call us on **0800 953 0113** and quote your fundraising reference, included on your pack welcome letter.



At the bank

Make a transfer from your own account using our bank details: Sort code 20-65-82 Account 43870731. Remember to put your fundraising reference in the payment reference section.



By cheque

Send a cheque made payable to 'Guide Dogs' to **Guide Dogs, Hillfields, Burghfield Common, Reading, RG7 3YG**. Don't forget to add your fundraising reference on the back of the cheque.



Fundraising page

By setting up an online fundraising page all the funds will come to us automatically. Create your fundraising page now at justgiving.com/campaign/guidedogspuppyappeal

Get in touch: **0345 143 0192** or guidedogsappeal@guidedogs.org.uk



Registered with
**FUNDRAISING
REGULATOR**

The Guide Dogs for the Blind Association is a company limited by guarantee and a registered charity in England and Wales (209617), Scotland (SC038979) and Isle of Man (1334). D305 07/25