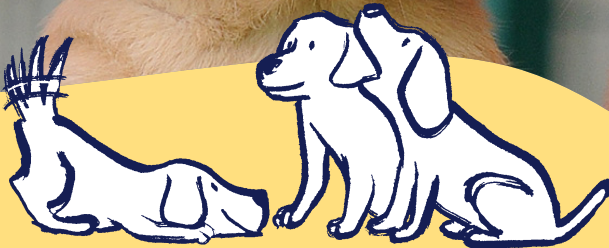
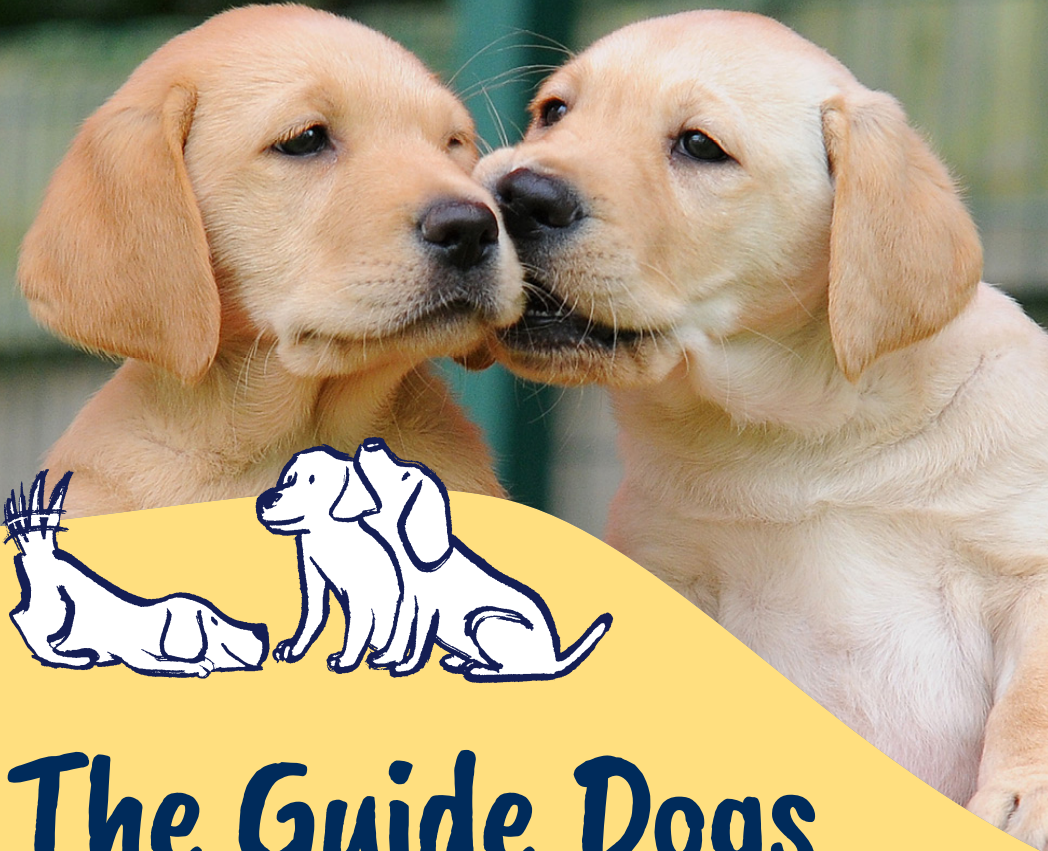


In aid of



**Guide  
Dogs**



# The Guide Dogs Puppy Appeal

Join us this October for learning,  
fundraising, inclusion and compassion

## Join the pack

Want an engaging and accessible way to introduce young people to issues around disability whilst also encouraging values of inclusion and compassion? Look no further than the Guide Dogs Puppy Appeal.

This October, nurseries, primary schools, secondary schools, and youth groups will be learning about our amazing pups while raising the essential funds needed to train our life-changing dogs.

There are so many ways to get involved...download our learning resources about our iconic dogs at [guidedogs.org.uk/learning](https://www.guidedogs.org.uk/learning), access our live assembly, and use our fundraising packs to help our pups become the life-changers of tomorrow.



## We're bringing the Guide Dogs Puppy Appeal into assembly halls across the UK.



### Save the date of Thursday 9 October

and join our interactive live Guide Dogs Puppy Appeal assembly for fun, learning, and, of course, puppies! Missed it? Don't miss out – use the recorded version for your own special assembly.

## Fun ways to get involved

Here's a few of our favourite ways to support the Guide Dogs Puppy Appeal.



### Puppy walk

Be inspired by Puppy Playtime on our YouTube channel then cut out a pup on our colouring sheets, pop on a ribbon lead and go for a wag-tastic sponsored walk. Invite the whole pack – families included – for a fun, feel-good fundraiser. Laps around the playground or a stroll to a set destination – little steps make a huge impact.



### Wear it bright

Brighten up everyone's day with our twist on non-uniform, wearing bright items...just like the high-vis flash on a guide dog's harness. Why not schedule this for the date of the assembly? Simple to run, won't disrupt the day, and if you add a collection box for donations, your fundraising will shine too.

### Who's a good guesser?

Use our 'guess the name of the puppy' game with a money box to collect suggested donations of £2 a guess. You even get a free guide dog soft toy as the winning prize. Other guessing games – like number of dog biscuits in a jar – continue the fun and introduce estimation skills too! Perfect to work alongside our range of learning activities and a paws-itively easy way to fetch vital donations.





# We're with you all the way



Our expert team across the UK are on hand to help with:

- Fundraising advice and support.
- Extras of any of the pack resources.
- Ideas for continuing young people's learning about sight loss and inclusion using our materials at [guidedogs.org.uk/learning](https://guidedogs.org.uk/learning).

## Pay in your fundraising

You can pay in the funds you raised online at [guidedogs.org.uk/payin](https://guidedogs.org.uk/payin)



### By card

Call us on **0800 953 0113** and quote your fundraising reference, included on your pack welcome letter.



### At the bank

Make a transfer from your own account using our bank details: Sort code 20-65-82 Account 43870731. Remember to put your fundraising reference in the payment reference section.



### By cheque

Send a cheque made payable to 'Guide Dogs' to **Guide Dogs, Hillfields, Burghfield Common, Reading, RG7 3YG**. Don't forget to add your fundraising reference on the back of the cheque.



### Fundraising page

By setting up an online fundraising page all the funds will come to us automatically. Create your fundraising page now at [justgiving.com/campaign/guidedogspuppyappeal](https://justgiving.com/campaign/guidedogspuppyappeal)

Get in touch: **0345 143 0192** or [guidedogsappeal@guidedogs.org.uk](mailto:guidedogsappeal@guidedogs.org.uk)



Registered with  
**FUNDRAISING  
REGULATOR**

The Guide Dogs for the Blind Association is a company limited by guarantee and a registered charity in England and Wales (209617), Scotland (SC038979) and Isle of Man (1334). D305 07/25