



Sponsor
a Puppy



Douglas

Out and about

Pupdate 2

Welcome to your June Pupdate

I hope you're well and enjoying the longer days and warmer weather as we begin to welcome summer!

We can't thank you enough for your continued commitment and support. Because of supporters like you, we've been able to create over 36,000 life-changing partnerships to date. That's more than 400 lives transformed each year for 93 years - and counting!

Did you know that 2 million people live with sight loss in the UK, and this number is set to double by 2050? We're committed to providing support to as many people as possible, for as long as that support is needed. With the cost of living continuing to rise, we appreciate your help now more than ever. Thank you so much for supporting Guide Dogs.

I'm pleased to share your sponsored puppy's latest Pupdate, and I hope you enjoy reading it.

Yours sincerely,

Steph

Steph Potter
Puppy Sponsorship Manager



Thank you

for sponsoring Douglas



Douglas has been busy growing and learning since your last Pupdate. He's a very smart, playful, and mischievous pup, making everyone he meets smile. He's growing into a wonderful dog and our bond is strengthening. Douglas still likes to observe the world and quietly watch; he's an inquisitive pup. He's an energetic young Labrador and very affectionate!

Growing up

Douglas' soft toy elephant has some competition from a soft toy clown fish for the top spot as his favourite toy. Along with soft toys, Douglas enjoys puzzle games. He loves to problem-solve and is great at these games, so I've invested in more difficult ones to encourage him to work out the best way to get the kibble. These games are excellent for enrichment and mental stimulation.

Douglas' relationship with my 11-year-old pet dog, Harry, has strengthened as Douglas matures. He's become more respectful of Harry's age and understands that he doesn't want to play as much as him. They love to cuddle up and snooze together. Harry's a great role model for Douglas, but Douglas is also a comfort to Harry. For example, Douglas isn't fazed by going to the vet, but Harry isn't a fan.

“

**Hello, it's
Caroline here,
Douglas'
Puppy Raiser.**

”

So, whenever Harry needs to go, we bring Douglas along to help Harry feel more settled; it's the sweetest thing!

Yellow Labrador Winston is Douglas' best friend, and they meet up regularly for free runs. Douglas is working on his recall and dog distraction. Winston's recall is amazing, so we bring Winston along when introducing Douglas to busier free run areas, like parks. He's like Winston's little shadow and follows him everywhere.



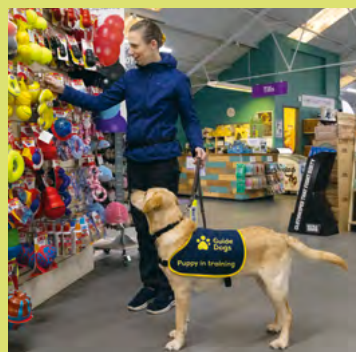
New skills

Douglas loves to learn. He's very patient, and we're working on maintaining cues such as 'sit' and 'down' for a duration of time or in busier environments; this teaches him to focus and helps improve self-control. I've also started to introduce him to the cue 'under'. I sit on a seat, and Douglas goes under my legs and lies down. This will be helpful in his potential future role if an owner needs to travel on a busy bus or train where there isn't much space; settling underneath his owner's legs will keep Douglas safe and out of the way.



New experiences

I've been busy introducing Douglas to new environments and experiences. His inquisitive nature means he copes well with new places and takes everything in his stride.



Find out more about how Douglas is progressing by scanning the QR code with your smartphone or going to:

[guidedogs.org.uk/puppy-douglas](https://www.guidedogs.org.uk/puppy-douglas)



Scan me

We've been to many places he may visit in his future career, such as supermarkets, cafés, restaurants, garden centres and even hospitals. Douglas was amazing in the hospital; he remained relaxed in this unfamiliar and busy environment. What a star!

Looking ahead

Over the next few months, I'll continue familiarising Douglas with as many new places and situations as possible to really build on his bank of different experiences and to give him a good foundation for training school. I'll also continue to work on his dog distraction and recall on free runs.

Thank you for sponsoring Douglas. I'm enjoying watching him grow. Find out how he's getting on in your next Pupdate in October!



Where is Douglas
on his Pupdate
journey?



1

2

3

4

5

6



What is Puppy Raising for Guide Dogs?

Puppy Raising for Guide Dogs is our bespoke puppy-raising programme that guide dog pups follow while living with their puppy raisers. It was designed in consultation with volunteers, staff, training behaviour consultants and canine research staff. It's based on Positive Reinforcement Training (PRT) which focuses on rewarding good behaviour and creating positive associations with new experiences. We treat each pup as an individual and help to support their physical, behavioural, and emotional development.



/SponsorAPuppy



GuideDogsUK



/sponsorapuppygd

Find out more about how we manage and respect your data at guidedogs.org.uk/privacy or call **freephone 0800 953 0113** to request a printed copy. Please use this number to tell us if you have changed your mind about how we contact you; including telling us that you do not wish to receive occasional direct mail about Guide Dogs.