

Eve

**GUIDE
DOGS**



Pupdate 2

Experiencing the world

Eve is growing up

**SPONSOR
A PUPPY**





Hello, it's Ian and Lesley here, Eve's Puppy Walkers. Welcome to her second Pupdate...

We love having Eve as part of our family. One thing puppy walking gives you is new friends as so many people want to talk to you when you have a dog. It gives us so much happiness knowing we are a part of Eve's journey to change the life of someone living with sight loss.

Life at home

Eve was a little diva at first, always wanting to get her

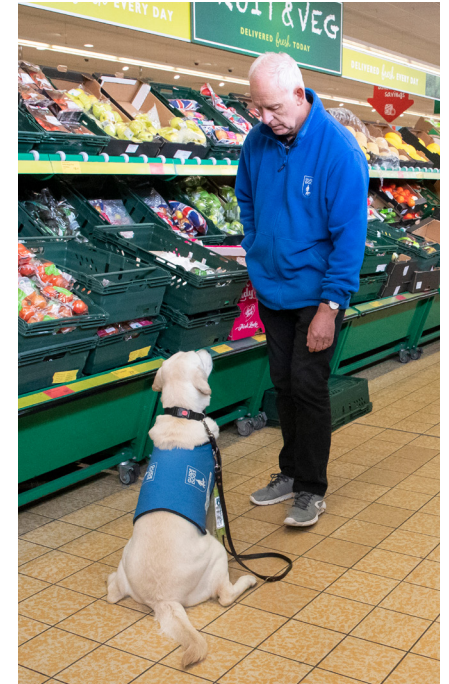
own way, but now she has become calmer and her patience has improved greatly. She has grown into such an affectionate and loving dog who never fails to make us smile!

Our other trainee guide dog, Ollie, has taken on the role of Eve's 'big brother'. They love playing tug of war together and Ollie often drags Eve around on the end of his rope toy!

Mastering skills

Eve loves her puppy classes and has come on leaps and bounds in her obedience skills. She's very good at the 'stand' command, which will be very valuable to her future owner when they want to put her harness on.

Alongside our Puppy Training Supervisor, Heath, we've



also taught her 'chin rest' in which she rests her chin on your hand and waits patiently. This is a very useful command to use for checking her ears, eyes and teeth and will ensure her future owner can carry out regular health checks on her.

The big wide world

We have continued to expose Eve to lots of new environments to build her

confidence. Eve isn't fazed by large crowds of people, a valuable trait for any future guide dog. We often take her to big shopping centres and busy train platforms and she takes it all in her stride.

(Continued overleaf)



We recently took Eve on a family trip to Norfolk where she experienced going on a boat for the first time. She was so well behaved, even ignoring the ducks which is no easy feat for any young dog!

Future challenges

Over the next few months we'll be working on improving Eve's ability to ignore food scraps and smells. She is always on the lookout for something tasty and so she doesn't look where she is going. I'm confident she will

overcome this challenge in the coming months.

Thank you so much for sponsoring Eve. Look out for your next Pupate in October.



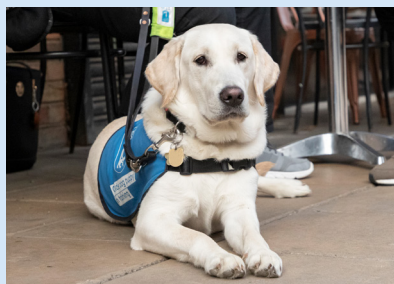
Training – Puppy to qualified guide dog

It takes around 20 months of training to transform a newborn pup into a qualified guide dog.

The pups learn basic commands and are introduced to new surroundings with their Puppy Walker.

They then venture on to Guide Dogs Training School, where they learn

the foundation tasks required of a guide dog. The final stages of training focus on their partnership with a new owner, where they learn specific skills tailored to their owner's specific needs.



Find out more about how we manage and respect your data at **guidedogs.org.uk/privacy** or call **freephone 0800 953 0113** to request a printed copy. Please use this number to tell us if you have changed your mind about how we contact you; including telling us that you do not wish to receive occasional direct mail about Guide Dogs.