

01

Becky Smith

Life is Golden

My design will cover the whole of the sculpture in gold leaf, with flowers, butterflies and birds painted across the sculpture. The whole concept is inspired by life itself and nature. The Guide Dogs vest and collar will be painted separately in the proper colours of a guide dog's vest. The whole design will also glow in the dark which will represent seeing things from a different perspective, and to show that sometimes things are there that you just can't see. I typically also paint quite thick, so you should be able to feel some of the outlines of the flowers painted on the sculpture.



Suggested touch:

Flowers and fruits. Or possibly leaves, petals, grass or feathers, as those are all things that will feature on the sculpture.



Suggested scent:

Flowers and fruits.

About the artist

Emerging artist Becky Smith has quickly forged a committed following for her immersive original works that advocate the purest form of imagination.

@bbeckysmithh



PAWS ON THE **WHARF**

Presented by



Supported by



Hosted by



Lois Cordelia

Visionaries

Portraits of famous historical people, past and present, who had vision impairment or sight loss – some famously, others less so. The painterly background loosely references waterlilies.



Suggested touch:

A sheet of braille.



Suggested scent:

Oil paints, as used by Claude Monet.

About the artist

Lois Cordelia is a versatile community artist, speed-painter, tutor, demonstrator and illustrator. She creates art live in public, presents her own YouTube channel, and welcomes bespoke commissions: "Unusual requests a speciality!" Her work has featured in numerous public art trails across the UK. Lois studied Arabic at the University of Edinburgh.

@loiscordelia



The Blind Braille Artist

Dot to Dog

The Dot to Dog design was inspired by having the tests at school to see if you were colour blind. Embedded in the design is going to be the braille alphabet raised in acrylic domes painted as one of the purplish tones. A visual madness but when touched you will discover the dog's secret.



Suggested touch:

Clarke's signature black kool glasses.



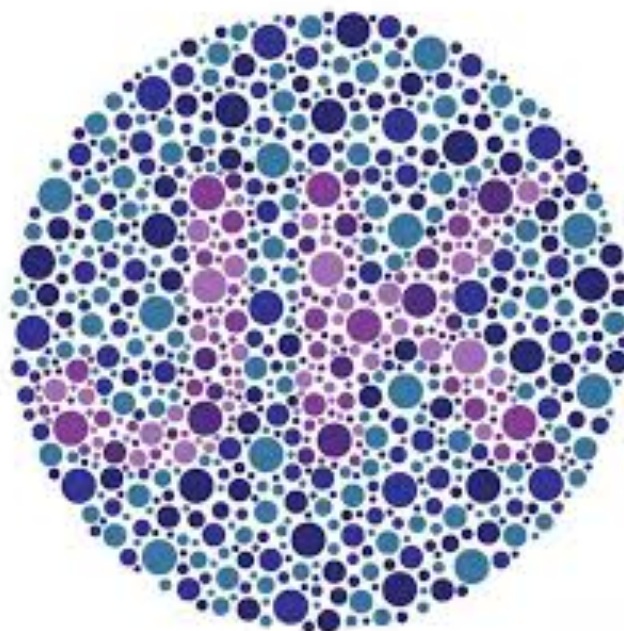
Suggested scent:

A clinical smell.

About the artist

Bridging the gap between visual and tactile. Taking that small dot, blowing it up, giving it purpose, as we start to talk about sight loss through my art instead of being hidden away just like braille. I'm here to show the creative industry that a blind person can be seen as a professional artist, not a hobbyist. Let's get people talking about sight loss and the enjoyment of being blind because I love being blind. I can't change it, I'm embracing it through my art.

@blind.braille.artist



A	B	C	D	E	F	G
⠠	⠠	⠠	⠠	⠠	⠠	⠠
⠠	⠠	⠠	⠠	⠠	⠠	⠠
H	I	J	K	L	M	N
⠠	⠠	⠠	⠠	⠠	⠠	⠠
⠠	⠠	⠠	⠠	⠠	⠠	⠠
O	P	Q	R	S	T	U
⠠	⠠	⠠	⠠	⠠	⠠	⠠
⠠	⠠	⠠	⠠	⠠	⠠	⠠
V	W	X	Y	Z		
⠠	⠠	⠠	⠠	⠠		
⠠	⠠	⠠	⠠	⠠		



MrASingh

Spectrum

A tactile guide dog embodying the diverse experiences of individuals with vision impairment. Dots, in an array of colours and metallic sheens, form a map of touch. Some dots, subtly raised, guide fingers along the spectrum of emotions.

Spectrum resonates with the unseen diversity in vision impairments, reminding us that every touch tells a story, and every dot is a step on the remarkable journey of those who navigate the world through touch.



Suggested touch:

Textured metallic dots or fuzzy velvet patches.



Suggested scent:

Lavender.

About the artist

MrASingh, a multi-award-winning contemporary artist and content creator, produces textured mixed media artworks that seamlessly blend elements of nature with global cultures. His captivating creations feature mesmerising patterns and vibrant colours, garnering attention from major brands and collectors. Consequently, his art is sold globally with a growing fanbase of advocates.

@MrASingh



Angela Charles

Straight On

On the theme of independence and freedom, because this is what my guide dog Flynn gives me. I used GPS to track our routes walking, and some of Flynn's free runs. I used the lines of the GPS tracking as a starting point for my mark making and colours which reminded me of an old globe or map to form a design.



Suggested touch:

The leather around the handle of the guide dog harness.



Suggested scent:

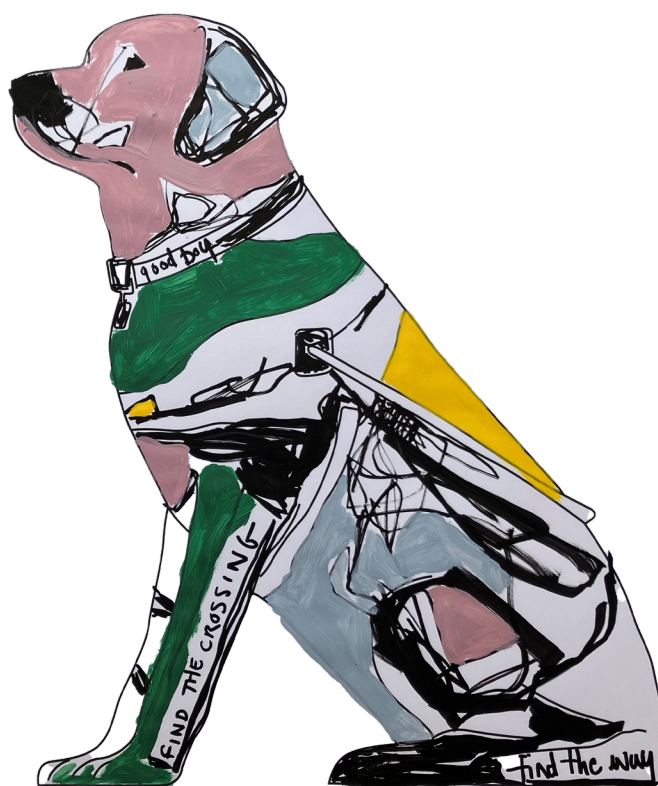
The smell of the country.

About the artist

Graduating from Goldsmiths in 1989, I combined a career as a curator with that of an artist. Exhibiting nationally and internationally, I've achieved commercial success with my paintings drawn from memories of place. Yet over the last thirteen years I have been losing my sight.

Following much personal turmoil, I 'came out as a blind painter' in 2021 after being awarded an Arts Council England grant. This funded a new series of work, a solo exhibition 'What are you looking at?' and a documentary film where I confronted my sight loss and its impact on my art.

@angela_charles_paints



Caroline Daly

Where's Theia?

My detailed design is based on search and find books. It is completely covered with a variety of flowers and wildlife, reflecting the textures and colours of nature. There are five dogs to find hidden amongst the wildlife, peeping out from behind plants and flowers. It highlights the sense of sight, the viewer needs to work a bit harder to see the dogs, encouraging the viewer to think about sight and people with different sight abilities or sight loss.



Suggested touch:

A bunch of flowers or grass.



Suggested scent:

A floral scent of wildflowers.

About the artist

Caroline is a socially engaged artist from Manchester with a background in scenic painting and prop making. She is interested in the transformative power of art to bring people together, to ignite imaginations, and to highlight the beauty that lies within our communities.

@cazdidit



Donna Newman

Dog Stars (Nebula)

The design is a tribute to all the amazing service dogs who are no longer with us. Each of these dogs were 'superstars' to their owners, providing the gift of independence throughout their lives of service. Inspired by the brightest star in the sky 'Sirius' known as the Dog Star. The design will feature fun, graphic illustrations of dogs frolicking among the stars. Judy, Flash, Folly and Meta, (the first ever British guide dogs), will feature on the design which will use some glow in the dark paints against a midnight blue sky.



Suggested touch:

A tray or bag containing metallic star-shapes.



Suggested scent:

Gunpowder scent.

About the artist

I am a freelance mural artist working within schools across the Midlands to inspire young people by transforming their learning environments with my vibrant artwork. My designs are playful and fun, often with a sense of humour.

@eden_designs_murals



Gayani Ariyaratne

Herby's Tale

Herbs and vegetables that are really good for the health of man's best friend. Herbs I would like to describe on the sculpture are in the flower form and vision impaired friendly, as I would like to make it embossed. This design will be full of colours and I would like to write some information in braille for vision impaired admirers.



Suggested touch:

Flower and herbs.



Suggested scent:

Rosemary and thyme.

About the artist

Gayani is an artist, glass painter, vegan chef and ethical floral designer. Originally from Sri Lanka, Gayani has been living in the UK for 27 years, now residing in Birmingham. Her work is inspired by nature, especially plants and flowers. Gayani also uses art as therapy to help people to overcome grief and improve mental health.

@gayanigolddust



Glen Brooks

Robot Dog with Rivets

Design summary TBC



Suggested touch:
TBC



Suggested scent:
TBC

About the artist

Glen is a Freelance Artist and has worked professionally as a Fine Artist/Scenic Artist in the corporate and design industry. He also worked for the artist Damien Hirst at his studio and he regularly completes commissioned artworks for The Connor Brothers in London.

@glen_brooks



Jenny Leonard

Cobolt

I am a live scribe, and my design will incorporate wrapping text and quotes in various lettering around the sculpture along with little silhouetted motifs of dogs and people with guide dogs walking on the horizon line and in parks. My design would reflect and quote the important values of Guide Dogs and bring them to life. These would be in stark contrasting colours, maybe just black, white, blue and yellow, throughout a landscape that wraps around the dog's body.



Suggested touch:

A soft fabric heart.



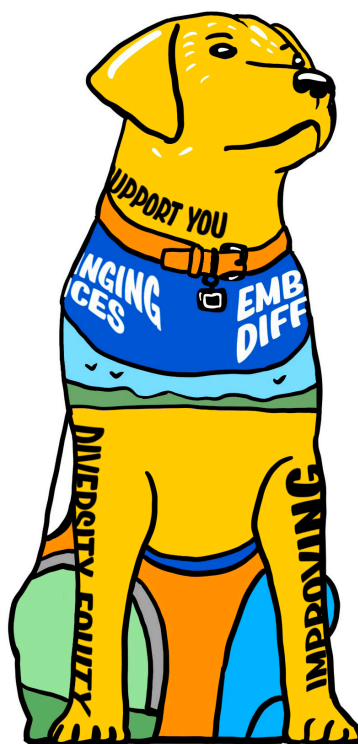
Suggested scent:

Blueberries.

About the artist

I am a community driven commission artist, always pursuing collaborative art projects that bring people together. I currently draw live illustrations for virtual online events and take illustration and painting commissions. I specialise in murals and site-specific public art for the community. I have exhibited over 70 sculptures on public art trails and have collectively raised over 250k for partnering charities.

@jennyleonardart



Alex Devlin

A Tangle with Colour

The block colours are to be painted like yarn, with occasional breaks and loose stitches, showing the white base underneath. The design features abstract representations of natural elements based on my surroundings, such as the greenery towards the bottom and the sun towards the top. Patterns inspired by dogs, such as the tennis ball style stitching on the front right leg and some hidden paw prints. Also my eye condition represented by the inward/outward spirals around the eyes.



Suggested touch:

Ball of wool/knitted strands.



Suggested scent:

Cake, bakery or tea smells.

About the artist

Alex Devlin is a vision impaired artist based in Ware, Hertfordshire. Alex is always pushing herself to take on new challenges and further develop her skills – ultimately achieving a Master's degree in Fine Art from the University of Hertfordshire. With her vision impairment, Alex's work strikes an interesting balance between attention to detail and abstract, dreamlike qualities.

@ALEXFDART



Amanda Quellin

Rosetta

I wanted to celebrate how wonderful our dogs are and asked people to give one word to describe their dogs. I have put those on rosettes on a gold background.



Suggested touch:

Real rosettes.



Suggested scent:

Roses would be perfect for Rosetta and would give a clue to the design name.

About the artist

I am a professional scenic artist and have worked in television, film and theatre in the UK and internationally. I now work on private commissions, murals and public arts projects. I wanted to work on this project, as since my mum's sight loss, I am more aware of the difficulties faced.

@amandaquellinart



Art + Believe

Poncho

Our inspiration comes from our travels. Ponchos are originally a woven garment worn in South America and serve as an all in one blanket and coat. The vibrant, colourful, geometric poncho acts as a beacon of light. It is nurturing, warm, protective and makes you feel safe. It perfectly emulates the amazing commitment and loyalty of guide dogs.



Suggested touch:

Handwoven blankets from Peru.



Suggested scent:

South American Coffee beans.

About the artist

We bring bold, geometric designs to urban landscapes around the world. Our inspiration comes from our travels and the different cultures we have visited. We started out painting murals in South America on peoples houses, buildings, then the streets or anywhere we could find a space! We are always looking to push the boundaries of where art is possible and to bring as much colour and energy to a space.

@artbelieve



14

Jess Perin

The Love of Dogs

Design summary TBC



Suggested touch:

TBC



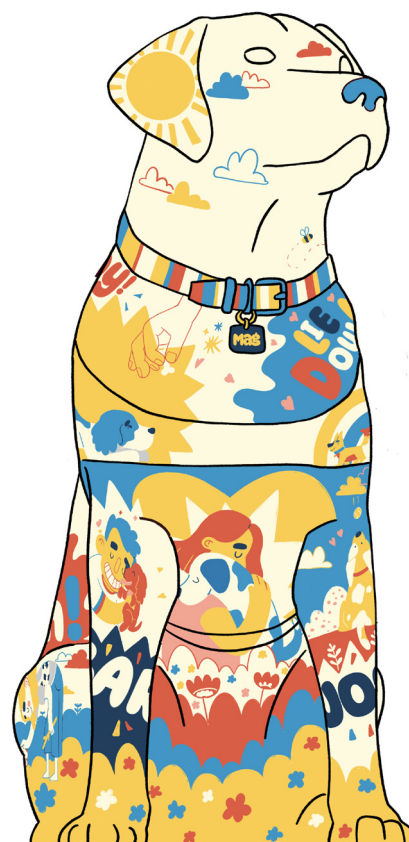
Suggested scent:

TBC

About the artist

TBC

@jessp_illustrates



15

Kevin Gavaghan

Hope and Resilience

Design summary TBC



Suggested touch:

TBC



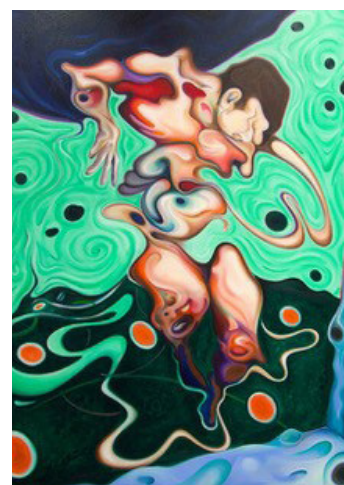
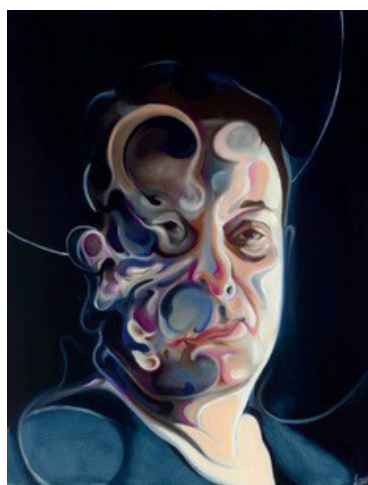
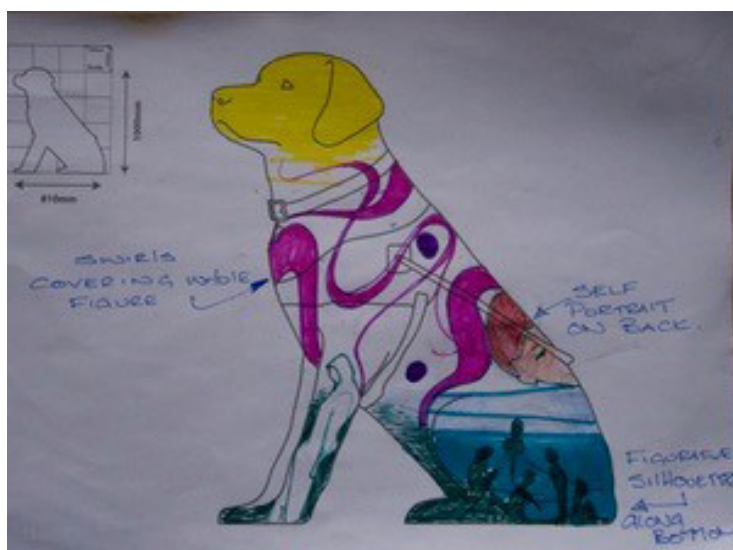
Suggested scent:

TBC

About the artist

TBC

@kmgartist



Marnie Maurri

Hearts of Gold

This design was based, quite simply, on the fact that all dogs, and especially guide dogs, are full of love and have absolute hearts of gold! I've covered this lovely sculpture in super-shiny gold hearts of varying sizes, with the biggest one being right on the dog's chest.



Suggested touch:

A soft, thick and furry blanket.



Suggested scent:

Vanilla or a 'warm' smell.

About the artist

As a freelance artist and illustrator, my work is highly detailed and focuses on the more whimsical and magical aspects of the world, often inspired by the small simple things, like a walk in the woods, hearing bird song (nature in general is a great muse!) I love to mix the human and animal worlds to make it one strange and beautiful place where flowers have faces, foxes ride bikes, toadstools are tables for tea parties, and colours are technicolour-vivid.

@marnie_makes



Mik Richardson

Baskerville

Our intrepid hero dog "Holmes" is on the case and ready for adventure. In his cape and Deerstalker hat he is unmistakable as the super sleuth. The inspiration behind the design was The Sherlock Holmes adventure "Hound of the Baskerville".



Suggested touch:

Tweed like cloth or a deerstalker hat.



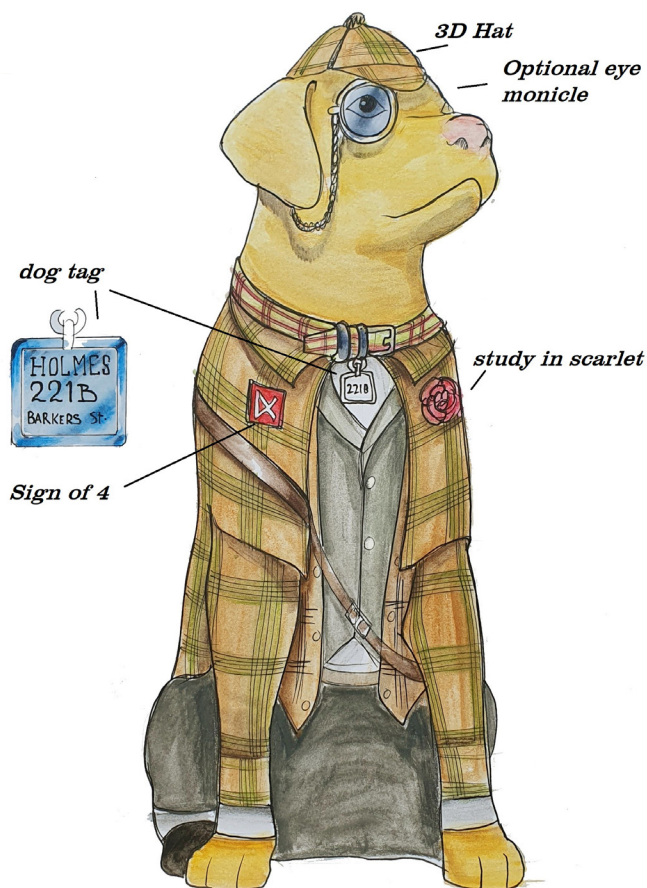
Suggested scent:

Old cloth or woodland to tie in with Holmes's outfit or the Dartmoor Forest location.

About the artist

I am a Norfolk based artist who has run his own art business since leaving the RAF in 2006. As well as producing over 400 murals, privately, in the community and in schools, I have also been involved in many public art trails, painting 103 sculptures, and also work with communities. I illustrated my first children's story book based around one of the Wild in Art sculptures that I designed and painted. My favorite specialist piece of art equipment that I like to use in my designs is the airbrush.

@mik_richardson
(Twitter)



Olivier Jamin

Day Off at the Beach

Imagine a guide dog owner with their guide dog strolling along the beach, leaving their foot and pawprints, creating patterns on the ground. When the owner removes the dog's white working harness, the dog knows it's playtime, and he can run around and explore his surroundings, until it's time to put the 'working harness' back on. As a Deaf artist, not able to hear some sounds, I translate sound into vibrations and images.



Suggested touch:

Pebbles, sand or beach towel.



Suggested scent:

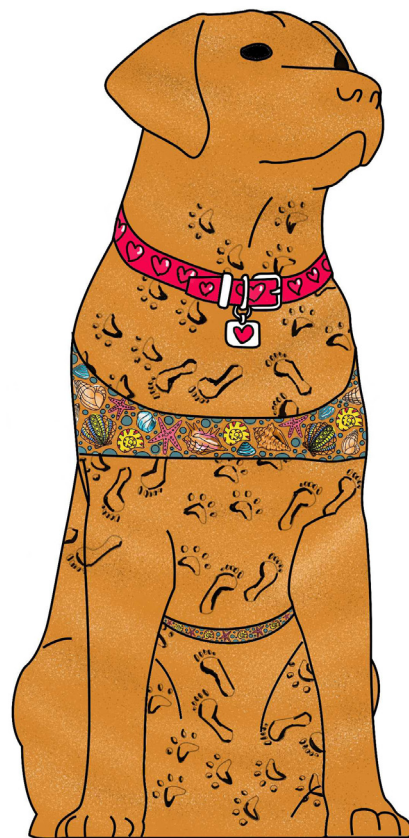
Salty sea water.

About the artist

Olivier Jamin, Birmingham based, award-winning, contemporary Deaf artist specialising in hand-drawn multi-coloured arts, video, photography, and retail design. He has contributed to successful sculpture trails creating eye-catching artwork.

He is constantly experimenting, combining the effects of colours and patterns, raising people's imagination and awareness, continuing as a role model.

@oliverjaminartist



Rachael & Phillippa Corcutt

Paws for Thought

This design evokes a sense of calm and mindfulness and the importance of taking a well-earned break and enjoying a rest from the hustle and bustle of the city. Inspired by the lush vegetation and plants in the famous Canary Wharf Sky Garden, from elegant bamboo to bright green ferns, we want to reflect the oasis of calm found in a busy and lively city. We also wanted to draw on the sensory experiences that gardens provide.



Suggested touch:

Soft textured plant i.e. fern.



Suggested scent:

Camomile.

About the artist

Rachael and Phillippa are illustrators and twin sisters who work together as an illustration collective. After graduating from the University of Derby with a First Class (Hons) Degree in illustration, they have gone on to create illustrations for children's books, magazines and greetings cards. Both sisters are represented by the Bright Agency and some of their clients include Scholastic publishing, Oxford University Press and Harper Collins.

@pipandrach



Siân Healey

Guide Dog Adventures

The head of the sculpture dog will be based on my own blonde guide dog Uri. Four postcards from the four regions of the UK will be placed on the body. Each will be an original painting featuring a guide dog and owner in a well-known location.



Suggested touch:

Tactile cards based on the postcard images.



Suggested scent:

Essential oils: daffodil, thistle, rose and Irish turf.

About the artist

Vision impaired artist Siân Healey is a person with Albinism. The condition affects her vision and this is reflected in her artwork which is often bright, abstracted and blurry. A qualified teacher, Siân has run art and craft workshops for vision impaired adults and children. Siân has been a member of DAC often submitting pieces that have been in their exhibitions.

Siân enjoys reflecting her life with her guide dog in her work and dogs feature heavily in her work. Working in oils and acrylics, Siân will often build in her work with collage and find materials to create texture.

@sian_healey
(Twitter)



Sue Guthrie

Guide Lines

Guide Lines is inspired by the artwork of 60s icon Bridget Riley. Bridget was born in London and her OP Art epitomises London cool in the 1960s. My hope is that the bold design will appeal to partially sighted and sighted visitors, with tactile elements making it accessible to blind visitors. The white elements will be made as smooth as possible, with the black elements being slightly raised and textured.



Suggested touch:

Fabric with a raised linear pattern relating to the Bridget Riley style and the influence that her work had on fashion in the 60's.



Suggested scent:

Mint humbugs.

About the artist

Sue has over 20 years' experience as a freelance artist. She has also worked as a scenic artist and co-owned a successful fine art company supplying commissioned artwork to clients such as BMW, Leisure industry clients, NHS, etc. She continues to enjoy working to commission and is also artist in residence in a couple of Birmingham schools.

@sueguthrie11

(Twitter)



Tim Sutcliffe

Jurassic Bark

This idea came from creating something a bit more tactile. The design would have various horns, spines (not sharp) and scales applied to it to make it look like a dinosaur and give the sculpture itself lots of different textures for those not able to appreciate it visually.



Suggested touch:

Some rubber scaly skin.



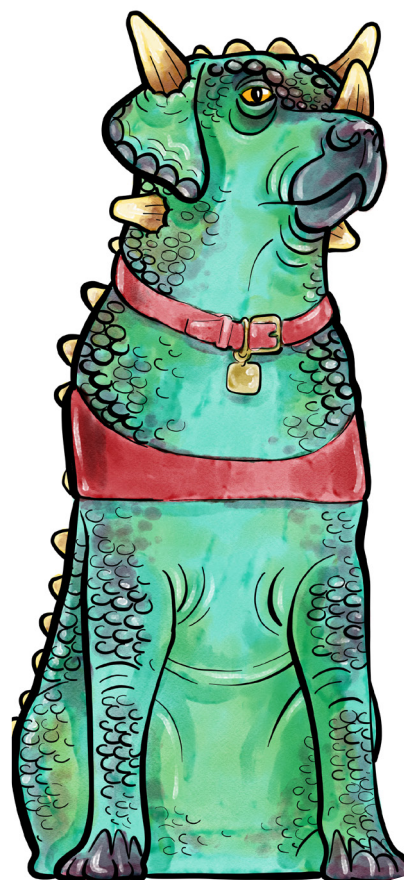
Suggested scent:

A swampy, jungle smell.

About the artist

I am a Bristol based artist, illustrator and designer and I work in a variety of different illustrative styles for various commercial and charity clients. I started working on my first sculpture art trail about 10 years ago and have completed 42 sculptures to date in cities all around the UK. I like to try out different styles and whilst I have done a few variations on certain themes, I like to come up with original concepts for each trail.

@liltimmytentoes



Lauren Mullarkey

TBC

Design summary TBC



Suggested touch:

TBC



Suggested scent:

TBC

About the artist

TBC

@TBC

