

Forward

FORWARD!

THE GUIDE DOG OWNERS' BULLETIN OF
NEWS AND INFORMATION

Editor: CAPT. N. LIAKHOFF
Assistant Editors:
MAY SABESTON WALKER, A.S.A.M.
J. EDGAR WALKER, B.Sc.



DECEMBER, 1944

FORWARD

Journal of The Guide Dogs for the Blind Association



Breeding Good Guide Dogs

FORWARD!

THE ANNUAL MAGAZINE OF THE
GUIDE DOGS FOR THE BLIND ASSOCIATION



No. 31

1969

FORWARD!

THE OFFICIAL ORGAN OF THE GUIDE DOGS FOR THE BLIND ASSOCIATION LTD



No. 17 — 1954

EDITORS: CAPTAIN N. LIAKHOFF, H.B.E., and ROGER ECKERSLEY

Forward

Journal of The Guide Dogs for the Blind Association

Redbridge opening shows GDBA success, says Princess

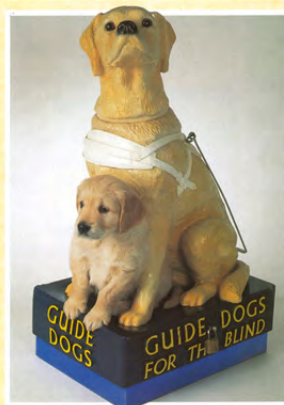
On 7 May, three years and three days after opening the Middleborough Centre, the Association's Patron, Princess Alexandra, officially opened Redbridge House, the new East Regional centre, and a visit that several times, according to reports, was the most popular day of the year for the Association. The opening ceremony, held at 10.30, was attended by the Princess, who was accompanied by the Duke of Kent, the Duke of York, and the Duke of Gloucester. The Princess, who was accompanied by the Duke of Kent, the Duke of York, and the Duke of Gloucester, was accompanied by the Duke of Kent, the Duke of York, and the Duke of Gloucester.



The Princess arrives happily to guests on her arrival at the Centre. With her are the Association's chairman, Mr Ian Findlay, and the Mayor and Mayoress of Redbridge.

Forward

Journal of The Guide Dogs for the Blind Association



GUIDE DOG WEEK
SEPT 28th to OCT 4th 1992

FORWARD!

Guide Dog Owners' Bulletin of News and Information



Editors:
Capt. N. Liakhoff
May Sabeston Walker
J. Edgar Walker

No. 6

NOVEMBER, 1945

Forward!

THE ANNUAL MAGAZINE OF THE
GUIDE DOGS FOR THE BLIND ASSOCIATION



No. 35

1973

Happy birthday Forward!

Guide Dogs' flagship magazine celebrates its 80th anniversary

Inside: a special welcome
from our royal Patron

Meet Guide Dogs' new
in-house vet team

The history of volunteering
at Guide Dogs

A woman with short blonde hair, wearing a yellow and white plaid jumpsuit and white sneakers, is captured in a dynamic jumping pose with her arms outstretched. A large red circle is superimposed over the image, partially obscuring the text.

WHATEVER HELPS YOUR CAUSE

Donate Virgin Points to Guide Dogs and help change lives

Join Virgin Red, Virgin's brand-new rewards club, to earn Virgin Points on the everyday, and spend them on everything from *Everyday Treats* to *Extraordinary Experiences*. You can even use your *Points for Good* and donate to Guide Dogs and help transform a young dog into a future life-changing guide dog.

Sign up now at virgin.com/virgin-red



Over 18s only, UK residents, membership required, terms and conditions apply.

Regulars

- 6** Welcome from the CEO
- 7** News
The latest Guide Dogs stories
- 12** Guide Dogs in the media
We've been all over the news!
- 13** Star news ►
Find out how Faye Winter, Michael Owen and Susie Dent have supported Guide Dogs
- 14** On the campaign trail
- 27** Thank you to our supporters ▼



- 32** A day in the life of...
Vet Caroline Goulton and vet nurse Shannon Stacey
- 34** New partnerships
- 43** Letters & caption competition
Sheila celebrates 60 years of guide dog ownership ▼



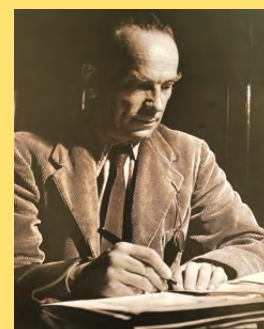
- 44** In good company

Features

- 5** A welcome from our Patron,
HRH The Duchess of Edinburgh
- 15** Fostering – helping our pups on their journey to become future guide dogs ▼



- 16** The history of volunteering at Guide Dogs
- 18** Celebrating Forward's 80th anniversary ►
- 20** Keeping it positive
- 22** Ruby's story ▼



- 25** Carlos's story
- 26** Coffi Lab reaches milestone fundraising target
- 31** Friends and family sighted guide training ►





Tailor-made books at everyday prices

Whatever format your child needs, we'll tailor their books to meet their individual requirements; font type and size, line spacing, paper colour and more.

We believe that everyone should have the same opportunity to develop a love of reading; that's why we subsidise the service for anyone buying books for children and young people with a vision impairment or dyslexia. Regardless of format, you just pay the recommended retail price.

Find out more at:
guidedogs.org.uk/customeyes

The Guide Dogs for the Blind Association is a company limited by guarantee and a registered charity in England and Wales (209617), Scotland (SC038979) and Isle of Man (1334). GD0555 04/23



Subscription enquiries:

You're receiving this copy of Forward magazine as one of our valued supporters.

Forward is available in standard print, Braille, large print and audio CD formats. It's also available online as an accessible PDF, as a plain text document and as audio files at guidedogs.org.uk/forward.

If you no longer wish to receive this magazine, or if you wish to change the format in which it's sent to you, please contact us on **0800 953 0113** or via guidedogs@guidedogs.org.uk.

Editorial contributions:

Send your stories to Forward by email to forward@guidedogs.org.uk or addressed to 'Forward magazine' by post to the Head Office address below. Unfortunately, due to the volume of ideas we receive, we cannot acknowledge every item. We reserve the right to edit or refuse.

Founding Editor:

The late Captain Nikolai Liakhoff MBE FRZS

Registered Head Office:

The Guide Dogs for the Blind Association,
Hillfields, Burghfield Common,
Reading RG7 3YG

Tel: **0118 983 5555**

Web: guidedogs.org.uk

Email: guidedogs@guidedogs.org.uk

© 2023 Registered charity in England and Wales (209617), Scotland (SC038979) and Isle of Man (1334). B004 04/23

Any products or services advertised in Forward by third parties are not in any way endorsed by Guide Dogs, and Guide Dogs shall not be responsible for the accuracy of any information contained in such advertisements nor has it investigated or verified any of the information.



BAGSHOT PARK

I would like to extend a warm welcome to this, the 80th anniversary edition of Forward. I am very pleased to be part of this special issue of Guide Dogs' flagship magazine, which began as a typewritten newsletter during the Second World War.

I am so proud to be Patron of Guide Dogs and, through the pages of this magazine, to see the work they do to ensure that blind and partially sighted people can live actively, independently and well.

One in five people will live with significant sight loss in their lifetime. Since the first four guide dog partnerships were created in 1931, Guide Dogs has been there for people who live with vision impairments, and their family and friends, every day and every step of the way.

I hope you enjoy this special edition and I'd like to take this opportunity to thank Forward readers for their continued dedication and support.

HRH The Duchess of Edinburgh GCVO



A welcome from Tom

I am delighted to be part of the 80th anniversary edition of Forward magazine. Sadly, this will be my last welcome as Guide Dogs' Chief Executive Officer, as I plan to retire at our Annual General Meeting this September to pursue my non-executive interests.

It is with very mixed emotions that I will be stepping down, as it has been an honour to lead Guide Dogs in providing our life-changing services to children and adults with vision impairments, delivered by dedicated, expert and inspiring staff and volunteers, alongside our wonderful dogs.

Shortly after starting at Guide Dogs, I noticed three things which I believe set this charity apart. The first is the incredible sense of collaboration within the Guide Dogs family – everyone comes together for the greater cause. The second thing is just how much our purpose as a charity, helping people who are blind or partially sighted to live the lives they choose, is an incredibly strong driving force for everything we do. The third is that so many people seemed to multitask; volunteers take on multiple roles, staff can also be donors and volunteers themselves, as can our service users and so on.

I myself have been a staff member who also volunteers, and a donor. I've been a puppy raiser and then breeding dog holder since I welcomed guide dog mum Dolly into my home

in 2018. I will remain a Guide Dogs volunteer, as Dolly will hopefully have her third litter in the autumn. It's been a joy and a privilege to see her pups thrive and go on to succeed in their guide dog training. By pure chance one of her pups, Una, was being temporarily fostered by my sister over Easter so we had a reunion!

During the six years I have enjoyed as CEO, we've celebrated Guide Dogs' 90th anniversary, made unprecedented investment in our future so we can change more people's lives, and seen much modernisation within Guide Dogs. Our brand identity, uniforms, our fleet

of vehicles and many of our sites have been revitalised, and our Academy is training the next generation of Guide Dog Trainers and Mobility Specialists.

We've also evolved our approach to dog wellbeing and welfare, seeing our dogs as partners and ensuring we use Positive Reinforcement Training during their journey to becoming guide dogs. I am proud that this aligns us with the direction of travel of the International Guide Dog Federation and Assistance Dogs International.

My time with Guide Dogs isn't quite over yet, I look forward to continuing to work with our fantastic staff and volunteers until September to achieve our plans for 2023 and beyond.

I have met so many wonderful people working and supporting Guide Dogs whom I will very much miss. I wish you all the very best.



Tom Wright CBE
Chief Executive
Guide Dogs
[@TomwrightUK](https://twitter.com/TomwrightUK) on Twitter



Dolly and Una

News

The fight for habilitation services in Wales goes on

Guide Dogs Cymru has been campaigning strongly on behalf of vision-impaired children and young people in Wales to end the postcode lottery of habilitation services. Three local authorities offer no habilitation services at all, and Guide Dogs is frequently having to step in to fill the gaps. In March, Welsh Conservatives tabled a motion in the Senedd supporting our concerns, with passionate contributions by members from various parts of Wales. The vote was tied 25-25 but fell at the Llywydd's (presiding officer's) casting vote. We were disappointed but determined to continue to lobby the Welsh Government and highlight the need for vision-impaired children to receive specialist support to develop skills for independence.

New Guide Dogs adverts tell a familiar story

In March, we launched a new advertising campaign to promote Guide Dogs as a brand, and encourage the public to engage emotionally with sight loss as a cause. The adverts tell a very relatable tale of brothers, Max and Jake, playing jokes on one another from childhood right through to adulthood, even as Max develops sight loss. Through Guide Dogs' support, where we show habilitation skills in the kitchen, long cane training and then later a guide dog, the advertisements raise awareness that Guide Dogs offers a range of services, tailor-made for individuals from birth to older age, that make a life-changing difference. There's even a version of the advert showing the brothers as older men, promoting the idea of leaving Guide Dogs a legacy gift.

These adverts build on previous commercials you may remember featuring a guide dog-owning father at his daughter's football match, and a little girl with sight loss preparing for her first day of school. Of course, just like before, it was vital that we cast real service users with sight loss into these new adverts. To watch them, and learn more about the stars, visit youtube.com/GuideDogsUK.





Royal Armouries Museum teams up with Guide Dogs

More than 20 staff at the Royal Armouries Museum in Leeds have received expert training and advice from Guide Dogs' local My Sighted Guide team to improve the experience of visitors with vision impairments. The Royal Armouries, the UK's oldest museum, is the first in the North East to have staff trained to guide someone who's blind or partially sighted as part of a pilot programme, which sees Guide Dogs partner with organisations across the UK to improve inclusivity and accessibility for people with sight loss.

Museum Duty Manager Robert Childs said: "I'm so glad I did this training as I now feel much more confident and comfortable in guiding people with a vision impairment. With front-of-house and museum assistant staff learning how to guide blind and partially sighted customers, it will make visits much more accessible in future."

We did it! Talking Buses become a reality

We're delighted that the UK Government has introduced rules requiring nearly all buses to provide accessible audio-visual (AV) next stop and final destination announcements. These announcements will enable all passengers, especially people with a vision impairment, to know exactly where they are on their journey, and where to get off.

Guide Dogs has been campaigning for AV on buses because, until now, bus travel was difficult or near impossible for many people with sight loss. This change opens up more opportunities for people to live independently. The new requirement will be introduced in stages, but most buses will need to have working, audible AV installed by October 2026 at the latest.



Guide Dogs campaigns for more support for families

We have launched our 'Out of Pocket' report which shows the impact the ongoing cost of living crisis is having on families with a vision-impaired child. Nearly 80% of families with a child who has sight loss are worried about being able to pay their energy bills. They also tend to incur additional costs for specialist childcare support and are much more reliant on car use, due to inaccessible public transport.

We asked the Government to make additional support available in the spring Budget.

While we welcome the extension of the Energy Price Guarantee, the 12-month fuel duty freeze and the announcement of 30 free hours of childcare per week for children aged over nine months (if parents are working) from 2025, the Government

needs to ensure childcare is inclusive and accessible. It's disappointing that despite having a focus on education, there was no reference to special educational needs in the Budget beyond a pilot for a Supported Internships Programme. We continue to work with families and the Government to encourage them to address disability support.

Guide Dogs' People Awards 2023 – who will you nominate?

Our People Awards recognise the outstanding work of our amazing volunteers, service users and staff. As before, this year's award categories are based on Guide Dogs' Behaviours, which capture the essence of what it is to be Guide Dogs PEOPLE: Person-centred, Expert, Optimistic, Partner, Lead-by-Example and Engage. There is also the Princess Alexandra Award for Lifetime Achievement, the Innovation Award and a new category – the Hero Dog Award, for one of our dogs who has done something particularly amazing!

The volunteer nominations are closed, but you can make service user and staff nominations online from the beginning of July for a month.

The ceremony takes place on Wednesday 8 November at our North West Regional Centre in Atherton, Manchester, and will be available to live-stream. You can find a full explanation of the categories, plus examples to help you, and details of how to watch the ceremony at guidedogs.org.uk/peopleawards.

Our Local Volunteer Awards, held in and around Volunteers' Week from 1-7 June, celebrated the amazing things our volunteers do to help people with sight loss live the life they choose. To find out who won an award in your area, visit guidedogs.org.uk and search for 'Awards and Recognition'.

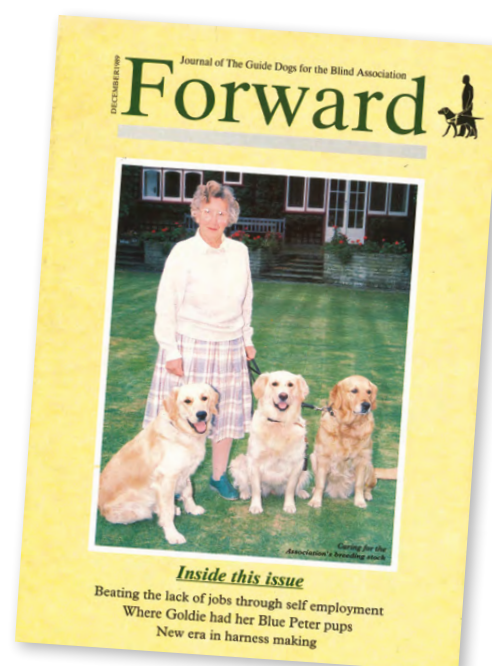
Remembering Diana Wyndham-Smith

Guide Dogs volunteer Diana Wyndham-Smith, from Kingston-upon-Thames, Surrey, has died at the age of 104. Diana held many roles from 1966-2015, starting as a puppy raiser and caring for 16 puppies before buying Bumble, a pure golden retriever who was accepted into Guide Dogs' breeding programme. During her time as a brood dog holder, Diana welcomed 186 puppies into the world, including a litter of five from Goldie, the guide dog mum who lived with Blue Peter presenter Simon Groom during the early 1980s.

Diana regularly welcomed a camera crew into her home to film litter updates for viewers, before driving the

pups to the studio to appear live on the show twice a week. Diana then looked after Goldie's next litter, with one pup going on to become the show's resident pet, Bonnie.

Diana also provided transport for dogs when needed, was a boarder and, together with husband Noel, supported the Esher volunteer fundraising group. Aged 80, Diana started looking after retired guide dogs instead, and continued her support at the age of 98 by sponsoring a puppy and leaving the charity a gift in her Will. Daughter Brenda Cook said: "Mum was a kind, caring, thoughtful, amazing lady. She was such an inspiration to her three



children, Hugh, Brenda and Jane, her eight grandchildren, 11 great grandchildren and all her friends and acquaintances. Her passing leaves a huge hole in all our lives."

Family fun at the Welsh Mountain Zoo

Sea lions and meerkats were the star attractions at our Family Event in the Welsh Mountain Zoo in Colwyn Bay in April. It was our team's second visit to the zoo, offering the attending 13 families who have a child with sight loss an enhanced, exclusive sensory experience. Children aged two to 14 helped feed the sea lions, handling the fish before throwing them into the animals' enclosure. Each family made a toy meerkat from cardboard and straw, filled it with mealworms and watched the meerkats play with their creations. They also encountered snow leopards, monkeys, birds, crocodiles, snakes, lemurs, ostriches, tortoises and tigers – from a safe distance! All agreed it was a lovely family day and enjoyed meeting our team, including buddy dog Jess.



Dogs travelling between Great Britain and Northern Ireland

Since the UK left the EU, the movement of domestic animals – including guide and other assistance dogs – between Great Britain and Northern Ireland and EU member states has been restricted. There has been a change to these requirements, making it easier for dogs to move freely; dogs coming from Great Britain will no longer require an Animal Health Certificate (and associated vaccinations) to travel to Northern Ireland. Instead, owners will be issued with a free lifelong travel document that confirms that their pets have been microchipped.

This is welcome news and a fantastic result for Guide Dogs which campaigned to ensure assistance dog owners can travel easily between Great Britain and Northern Ireland.

Partnership with Virgin Atlantic takes off

Guide Dogs and Virgin Atlantic have announced a long-term partnership to create a more inclusive air travel experience for passengers with sight loss. The first part of this initiative will offer the airline's cabin crew bespoke training on how to support those flying with a vision impairment.

Guide Dogs' training aims to support customers by teaching Virgin Atlantic crew best practice when helping people who are blind or partially sighted, covering how to approach someone with sight loss, navigating narrow or busy spaces, stairs, steps and doorways, and taking a seat.

The collaboration launched as new research of 250 adults with vision impairments in the UK revealed that three-fifths (59%) would like to travel abroad more, however almost seven in ten (68%) are reluctant to travel by plane because of previous negative experiences.



Guide Dogs veterinary centres open their doors

The sun was shining as we celebrated the official opening of our Guide Dogs Reading Hub veterinary centre in May. Our Reading in-house vet team were joined by members of the local team, CEO Tom Wright, and Guide Dogs' Chairman Jamie Hambro.

Chief Veterinary Officer Tim Davies, who oversaw the project, said: "It's great to see both the Reading Hub and National Centre facilities up and running. We have highly experienced vets and vet nurses at both locations, providing top-quality, consistent care to our dogs, whilst making the best use of the funds we spend on veterinary provision."



The centres are already treating canine patients, and will work in partnership with guide dog owners' local practices, which remain the first point of contact. The centres will see referrals and take on routine procedural work, as well as acting as the in-house provision at the National Centre near Warwick.

See pages 32-33 for a day in the life of two of our new vet staff.

Guide Dogs takes part in The Big Help Out

This spring, Guide Dogs took part in The Big Help Out – a festival of volunteering to mark the Coronation of HM King Charles III. Aimed at those who have never volunteered before, The Big Help Out came at a crucial time for Guide Dogs as we continue to recruit volunteers. In May, we hosted events around the UK to spread the word about all the ways volunteers can join the Guide Dogs family.

This included a visit from Their Royal Highnesses The Duke and Duchess of Edinburgh. Our Royal Patron, Sophie, Duchess of Edinburgh, was joined by her husband, Prince Edward, Duke of Edinburgh, at our Reading Hub. The Duke and Duchess met future life-changers Hollie, Lucy, Luker, Nyla and Sunny and their

volunteer puppy raisers at a puppy class celebrating the festivities with a Coronation-themed café.

We are also very proud that four of our incredible volunteers were among 500 Coronation Champions honoured by the King and Queen in the run-up to the Coronation. They were chosen from 5,000 nominees from across the UK for their outstanding contribution to Guide Dogs.

We'd like to extend a very warm welcome to everyone who attended a Big Help Out event and signed up to help us raise vital funds, look after our dogs in training, support our My Sighted Guide service, and so much more – all in aid of creating more life-changing partnerships.



Guide Dogs in the media

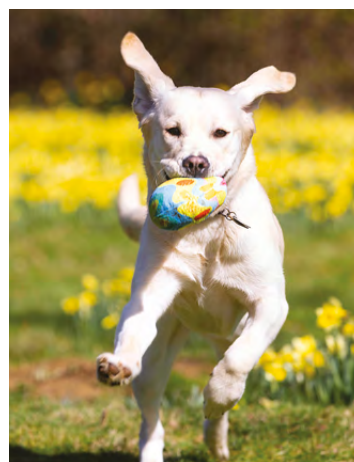


Journalist Sean Dilley made a series of moving reports for BBC Breakfast about the retirement of his guide dog, Sammy, to highlight how the number of guide dog partnerships in the UK has gone down from 5,000 before the pandemic to around 4,000 now, and to appeal for volunteer fosterers and puppy raisers to help us get back on track. Sean told viewers how the pausing of our breeding programme in 2020 due to lockdown and the impact of social distancing is still having a knock-on effect on the number of guide dog partnerships we can create.

Sean's reports sparked a wave of coverage across many other media outlets, as well as many volunteer applications. He also made a short documentary about Guide Dogs, featuring some of the volunteers and service users he spoke to for his Breakfast reports, which is available on BBC iPlayer until March next year at [tinyurl.com/BritainsGuideDogShortage](https://www.tinyurl.com/BritainsGuideDogShortage).

We highlighted the exceptional story of 65-year-old guide dog owner Tiggi Trethowan, who is completing a "visual memory list" before she loses her sight completely. Tiggi has visited an Australian island with a population of nine, and explored Antarctica, so we arranged for her to tick something else off her list: an outdoor treetop assault course with the Chief Instructor on the Channel 4 show SAS: Who Dares Wins, Billy Billingham. Tiggi's story appeared on ITV News and Sky News, on BBC Radio 4's Today programme, and in the Daily Mail Online, The Independent, The Daily Telegraph, the Daily Express and Daily Mirror, plus multiple local titles.

To celebrate Easter, we revealed how dog owners can create a canine-friendly Easter 'egg' hunt. Guide dog puppies Hollie, Sunny, Luker and Joshua were treated to a special hunt to seek out treats together with guide dog mums Poppy and Riley. We issued adorable pictures of the hunt to the media, alongside tips for recreating it at home from our National Dog Training Lead, Hannah Wright, and we highlighted our 12-month Good Dog! subscription for more training advice. The story appeared in more than 130 media outlets including the Daily Mail Online, The Independent, Evening Standard, The Times, the Daily Express and the Daily Star.



Star news

The Faye Effect is in full force

Huge thanks to Love Island's Faye Winter for her support as a Campaign Star this year, and for her long-term volunteering as a fosterer. After her appearance at Crufts in March, the Faye Effect saw a 937% increase in views of the fostering pages of our website. Faye also named a pup Winter, promoting our Name a Puppy scheme on National Puppy Day on 23 March. She hosted her own Tea Party fundraiser in April with her Love Island friends, and shared numerous Guide Dogs social media posts with her hundreds of thousands of followers. Finally, she was lauded in May for her inspiring words onstage at the launch of the national volunteering initiative for the King's coronation, The Big Help Out, where she called for charities to make sure they attract younger volunteers.



Susie spells out how sighted guiding skills help

We announced Countdown lexicographer Susie Dent as our new Campaign Star as she made numerous media appearances to talk about her training as a My Sighted Guide volunteer, what the role involves and how others can volunteer for the service. She was a guest on ITV James Martin's Saturday Morning show, on BBC Breakfast, Heart Radio's breakfast show and BBC 5Live, and she gave an exclusive

interview to the Sunday Mirror. All the media coverage led to a huge increase in visits to our My Sighted Guide website. Susie said: "Becoming a My Sighted Guide has been such a rewarding experience. Not only have I learned some vital skills and now feel confident I can guide someone with sight loss but I've met some incredible people too."



Michael's goal to help children with sight loss



Former England striker Michael Owen teamed up with Guide Dogs to encourage schools to host our inclusive sports day, Fund Race, to support our services for children and young people with sight loss. Fund Race is a sports day track race with a twist - every participant is blindfolded and uses a rope as their guide, with participants encouraged to donate to take part. Michael

said: "As a father of a child with a vision impairment, I know all too well how sometimes children with sight loss can feel left out at school. But with Guide Dogs' life-changing support, they can learn things in a different way and do all the same things as their friends. Fund Race is a great way to make sports day more inclusive and educate the next generation about the impact of sight loss."

On the campaign trail



Guide Dogs plays a part in shaping the future for children and young people with sight loss.

Earlier this year, the Department for Education released their long-awaited 'Special Educational Needs and Disabilities (SEND) and alternative provision improvement plan', as the Government wants to improve education, health and care for children with SEND needs in England to ensure they reach their potential.

To help shape that improvement plan, last year we ran three events for young people who are blind or partially sighted and their parents, so they could tell us their views. From those views, we sent the Government some recommendations, and we'd been keenly waiting for Westminster to tell us their next steps ever since.

We welcomed some of the announcements in the improvement plan.

Specifically, the Government announced a new apprenticeship to train more teachers for children with sensory impairments. We know that when a child gets the right support from a trained specialist professional, the consequences can be transformative.

Currently, there aren't enough specialist professionals, such as habilitation specialists and qualified teachers of the vision impaired, so we were glad to see the Department for Education commit to ensuring a secure supply of teachers of children with vision, hearing, and

multi-sensory impairments in both specialist and mainstream settings. However, we know increased training in this one specialism is not a quick fix, and we're flagging our concerns about the continued shortages of other specialist professionals.

A big focus of the plan relates to Education, Health and Care Plans (EHCPs). EHCPs set out the support that the children with the highest needs should receive. Many children who are blind or partially sighted can have their needs met without the need for an EHCP. However, for children that do need one, they are important in making sure schools and health services meet their needs.

The Government will standardise EHCPs and make them digital, to reduce inconsistencies across the country. We welcome this, as long as they're accessible to all. The Government wants fewer children to have EHCPs but this can only be successful if children are able to access the support they need without one.

At the moment, where you live in England can radically affect the support you get. The Government has recognised this, and we welcome that they're seeking to reduce this inconsistency. We will work with the Government to ensure their plans work in the real world for children with sight loss.

Overall, we were pleased to see the plan released at last, as there are some positive announcements that are much-needed. But, with the current problems in SEND education, we know changes need to be addressed now otherwise children with vision impairments will continue to fall behind their sighted peers.

Fostering – helping our pups on their journey to become future guide dogs



From birth to the time they qualify as guide dogs, our life-changers-in-training live in a loving home provided by a volunteer.

Having spent their first year with their breeding dog holders and puppy raisers, at around 15 months old, dogs start at 'big school' – spending their weekdays at a Guide Dogs centre, learning everything they need to know to be a guide dog. This part of their training is where a guide dog really learns all the skills of the trade.

It's hard work learning to be a guide dog, but there's plenty of down-time too. Volunteer fosterers look after the dogs during the evenings and weekends for around six months. These volunteers provide a caring home for the dogs – a place to rest and play after a day of training. At home, the dogs love to go for walks, play with their family, or curl up and have a snooze, just like a regular pet dog.

Volunteer fosterers don't need any prior experience of dog handling or training. Guide Dogs will do the actual training, and we give fosterers all the support they need for

taking care of the dog at home. Fosterers have a dedicated volunteer manager throughout their journey, and no question is too big or too small.

Fosterers are never out of pocket for looking after a future life-changer, as Guide Dogs covers all the expenses associated with the dog including food, toys, and any equipment needed.

In return for giving a guide dog in training a home, fosterers get all the benefits of having a dog around plus the satisfaction of knowing that by giving a future guide dog a loving home, they are helping to make a huge difference to the life of someone with sight loss.

As we rebuild our guide dog breeding programme following the pandemic, our need for more volunteer fosterers to accommodate the dogs in the second half of their training has never been greater. To find out more about Fostering a future guide dog, visit guidedogs.org.uk/fosterer.

“ [Fostering] is just such a lovely thing to do. You're giving the dog a chance to live with you and you the chance to live with a dog, and you're providing it with security while it learns to do a super job.

Margaret, Fosterer



The history of volunteering at Guide Dogs

In 2023, we are fortunate to have 15,500 volunteers. From fundraising to taking care of our puppies, we depend on a dedicated community of volunteers who give us their time to help Guide Dogs create life-changing partnerships. But volunteering for Guide Dogs is not a new phenomenon – today's volunteers are continuing a proud legacy that started at the very beginning of this charity's history.



This photo was used in a brochure Guide Dogs published in 1981 titled 'Fifty years forward', marking fifty years of guide dog partnerships in the UK.

In April 1930, a Liverpool politician and early supporter of the guide dogs cause placed an advert in the local paper asking for members of the public to 'assist the project by offering [dogs'] keep'. There was just one response, from Miss Muriel Crooke, Secretary of the local Alsatian League. Miss Crooke would go on to be a founding member of Guide Dogs as we know it today, but in those earliest of days she took it upon herself to fulfil the role that so many of our vital volunteers do today – that of a fundraiser. By the end of 1930, she had raised £90 in cash and two £50 'scholarships' – the scholarships paid for the training of one dog and one owner. In today's money, this equates to more than £15,800.

Throughout the 1930s and 40s, the training of guide dogs in the UK got underway in earnest. Naturally there were teething problems, sometimes literally – one of the first guide dogs, Meta, ate his owner's false teeth – and some of these difficulties shaped how the organisation raises and trains dogs to this day. For instance, Meta (like many of his peers) was destructive indoors because, until being placed with his

owner, he had never lived in a house. Dogs at the time were raised and trained in kennels until they were partnered with their new owner, so dogs had the additional challenge of adapting to a home environment after training unlike today when, thanks to our volunteers, they are born and raised in homes around the UK.

This change got underway in the mid-1950s, when the very limited supply of suitable guide dogs was stretched to breaking point. The team knew something had to change if they were to be able to produce quality guide dogs in adequate numbers. Evidence from short trials had shown that puppies who were reared in a home and taught guide dog principles from the start, rather than adult dogs brought in at a later date, had a higher success rate. Although our understanding of dog behaviour, training and welfare has moved on significantly from the 1950s, this approach of teaching foundational principles in a home remains. Today, all guide dog puppies spend their first year in a loving home with one of our volunteers, and undergo a standardised training programme (Puppy Raising for Excellent Partnerships).



A selection of Guide Dogs collection boxes over the years.

Early attempts to embed volunteer puppy raising got off to a slow start but by March 1959, some 349 pups had been raised in homes, with a 45% success rate. This was significantly higher than dogs who weren't reared in this way, with previous success rates as low as 20%.

In the 1950s, the socialising of future guide dogs was recognised as essential – a cornerstone of dog training that is still central to how Guide Dogs operates today. When a guide dog puppy is socialised properly in a home and introduced safely to all the challenges it might face in the modern world (busy streets, loud traffic, different people and environments, etc), it has the best possible chance of becoming one half of a successful guide dog partnership. Today, thanks to Guide Dogs' world-class breeding and training programme – and thanks to the volunteers who make it all possible – up to 70% of puppies in training go on to become guide dogs.

Since Miss Crooke first began fundraising in 1930, a lot has changed at Guide Dogs. Of our 15,500 volunteers, more than 750 are My Sighted Guide volunteers. My Sighted Guide

started in late 2010 as a pilot delivered through community partners, and now our volunteers help people with sight loss in their local area to get out and about and gain confidence.

Our understanding of dog behaviour, genetics and training has been transformed since the early days of Guide Dogs. Our guide dogs now spend their whole first year with their puppy raisers, and up to another year with a volunteer fosterer while they undertake their full-time training. Most puppies are even born in a volunteer's home. But one thing that hasn't changed is the importance of the first months of a guide dog puppy's life, and the positive influence being raised in a home has on their wellbeing and development – without volunteers, Guide Dogs simply couldn't create so many successful life-changing partnerships.

Muriel Crooke receiving the Buddy Award in 1974 from the Earl of Lanesborough, the association's president at the time. The award was given by the American organisation, The Seeing Eye, in recognition of Muriel's 'foresight, integrity and unflagging effort' in establishing The Guide Dogs for the Blind Association in Britain.



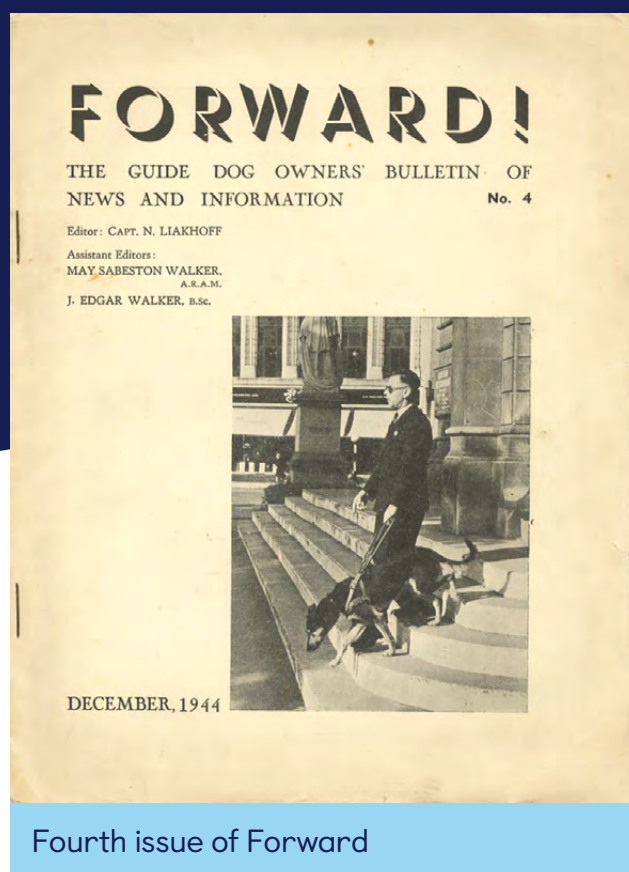
Most of the research into the history of volunteering at Guide Dogs came from "Another Pair of Eyes: The Story of Guide Dogs in Britain" by Peter Ireson.

Celebrating 80 years of Forward – Guide Dogs' flagship magazine

After Guide Dogs formally became a charity in 1934 our very first trainer, Captain Nikolai Liakhoff, started writing a bulletin of information aimed exclusively at guide dog owners. And so Forward, named after the command an owner gives their guide dog to move off, was born. Here, we look at the magazine's formative years.

Sadly the first three issues of Forward, published from 1943, are lost to the mists of time. But we do know from a piece in a later edition that the magazine began "in a very modest way, for in those war-time days you weren't allowed to publish new magazines, and our funds had to start from scratch." The magazine's costs came from readers' donations, a concert, a "small" legacy, one "substantial" donation, and the sale of the publishing rights to a book called The Road to Freedom. Forward was produced in Braille, and the standard print version comprised cyclostyled pages stapled into a printed card cover. On the front page, the magazine billed itself as 'The guide dog owners' bulletin of news and information', and its total circulation was "not much above three hundred".

The fourth issue, dated December 1944, was also made using cyclostyling with the editor detailed as Capt N Liakhoff, and assistant editors as May Sabeston Walker A.R.A.M. and J. Edgar Walker B.Sc. In this edition's 'editorial



Fourth issue of Forward

notes', under the title 'Keep your old copies', it says: "When readers begin to ask for back numbers of a magazine the exitors [sic] can begin to feel that the magazine has "arrived". We are beginning to get requests for the first three issues of FORWARD, both in Braille and script, but we are sorry that no copies are available. We produced as many copies as our limited resources would allow, but these left none spare after immediate needs were satisfied.

"We would advise guide dog owners to keep their copies of FORWARD. They will probably

find that in these old copies there is some bit of information, something of interest, that may be useful later one [sic]. And when FORWARD takes its place, as it will one day, among the established periodicals, these early copies may be historic and even valuable."

By the Christmas 1950 issue, the editorial says: "Until now, FORWARD! has been a private concern, though not a commercial proposition, copies of the magazine being sold to the Association at cost price and distributed by them to guide dog owners and people interested in our cause." It went on to detail that, as the association's work was growing, it made sense for Guide Dogs to "adopt" the magazine and bring it "under the Association's control". The strapline on that edition's front cover changed to 'The official organ of the Guide Dogs for the Blind Association Ltd'.

In that same issue, a guide dog owner writes in to say: "I think there is a danger that FORWARD! is becoming more a printed testimonial for sighted readers of the inestimable blessing of the possession of a guide dog, rather than a bulletin of information for guide dog owners themselves."

The editorial responds: "It is true that FORWARD! was started to give information to guide dog owners. Then the object widened. We introduced pictures – a step towards making sighted people more interested in the

publication. Gradually, pictorial representations of our work and testimonials of the worth of their dogs given by guide dog owners in attractive articles, came to play a very important part in the magazine, which now has a dual object: –

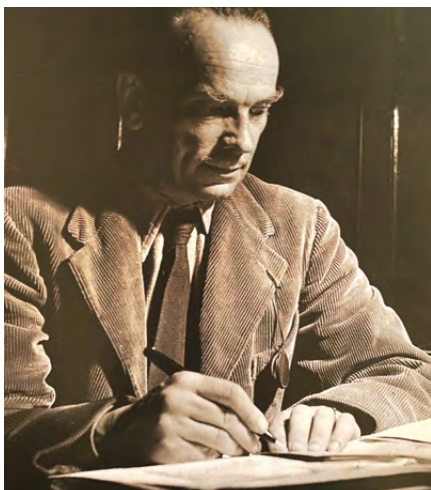
1. To give to guide dog owners as much information and news as we can – and this depends on how much they themselves want to write to us;

2. To be a testimonial for sighted readers of what a guide dog can do for a blind person.

"Although we must in no way forget the primary object of FORWARD!, neither must we forget the general public who supply money for our cause and to whom an account of the association's work is due."

Today, Forward inspires readers with stories about Guide Dogs' range of services and our life-changing work, encouraging them to get involved. The magazine strives to engage service users, volunteers and supporters, and ensures everyone in the Guide Dogs family feels proud to be part of Guide Dogs.

Do you have one of the first three copies of Forward magazine at home? Get in touch – forward@guidedogs.org.uk or via Forward magazine, Communications Team, Guide Dogs, Hillfields, Reading Road, Burghfield Common, Berkshire, RG7 3YG.



Forward's first editor – Captain Nikolai Liakhoff

Born in April 1897 in Odesa, Ukraine, Captain Nikolai Liakhoff served in the military before becoming an instructor for L'Oeil qui Voit (The Seeing Eye) in Switzerland in 1931. When the school moved to America in 1933, he joined Muriel Crooke and Rosamund Bond in England to become Guide Dogs' first permanent Guide Dog Trainer. Not content with just overseeing training, Capt Liakhoff also started our breeding programme before becoming the first editor of Forward magazine.

Keeping it positive

The way we train our dogs has evolved over time. Here, a puppy raiser and guide dog owner explain how reward-based training works and why it's best for the welfare of our dogs.

At Guide Dogs we use tasty treats, toys and praise to train our dogs. These are given as rewards when a dog gets something right, encouraging them to repeat behaviours that we like – this is known as positive reinforcement.

Underpinning everything is getting to know each dog as an individual and putting their likes, dislikes and preferences at the centre of their care and training. This includes making sure puppies and dogs are put in situations and surroundings that make behaving in the right way easy to choose.

This way of training is evidence-based and is now widely considered by animal training organisations across the world to be the most ethical, efficient and effective method. It also means that we no longer use training techniques that can cause fear and stress, such as telling the dog off or pulling on the collar to 'correct' unwanted behaviours.

Meet one of our new puppy raisers who's learning how to train and socialise a guide dog puppy for the first time, along with a guide dog owner who's experienced first-hand how our training has changed over the years.



Mark, Puppy Raiser

Mark, who lives in Exeter, has had pet dogs all his life including German shepherds and labradors. While without a dog of his own, he saw a puppy raiser discussing their role on Channel 4's Steph's Packed Lunch. Mark and his wife applied immediately and now have their first guide dog puppy, Larry. Mark said: "The support that Guide Dogs has given us from the start has been great. There are fortnightly visits letting us know what to start work on next, and these reassure us that we are doing a good job with Larry.

"Between visits, we go to puppy classes that Guide Dogs

runs and these have been so different to my experience of having my own puppy and going to a private puppy class.

"Instead of being taught the basics of sit, down and how to walk and recall a puppy, you learn about your puppy's body language. This is fundamental as without an understanding of this, I feel you have no chance of successfully raising a puppy.

"I hope to carry on puppy raising for Guide Dogs after Larry goes on to his further training. And if I got myself another dog of my own, I would try to raise it the same way as I have learnt from Guide Dogs."

John, guide dog owner

John is a guide dog owner in Glasgow. He recently qualified with his eighth guide dog, named William.

John says: "I was sceptical about positive reinforcement to begin with. I thought that it seemed quite namby-pamby and didn't understand how you'd use it to correct a dog.

"The way I learnt before, if the dog was distracted you gave him a wee flick on the handle or put pressure on the lead to keep him moving on. Now it's all done by using your voice and treats.

"When William stops at the kerb, finds a traffic light or takes me to the mobility point at Glasgow Central station, I say 'good boy' and give him a treat to reward him.

"You use food all the time to begin with to reinforce specific behaviours, but then not as much as these become habit. It's just really a tool to use. The outcomes are the same as before in terms of working the dog.

"If William ignores distractions such as other dogs when we're out and about I give him verbal praise and then food. If he stops, I just say 'straight on' to keep him moving.

"I enjoy the new way of doing things and it builds up the bond between me and William. He's happy working, loves the praise and it's as if he's asking, 'Did I do OK there, Dad?'. That's what you're looking for. It took me a while to get used to, but it works. In time, you'll reap the rewards and end up with a cracking dog.

"Things have changed. It used to be acceptable for kids to be smacked but it achieved absolutely nothing. Using physical chastisement to train a dog is nonsense.

"To any guide dog owners who feel unsure about the new way of training, I'd say be patient and give it a try. Stick to what you're told and keep things up. It does get easier, and everything is much more of a positive experience now. I'm happy with it, definitely."

If you're interested in finding out more about how we train our dogs, episodes four to six of our 'The Journey of a Guide Dog' documentary series on Guide Dogs' YouTube channel have more information at youtube.com/GuideDogsUK.





Ruby's story

Three-year-old Ruby has loved getting messy with watermelon at Guide Dogs My Time To Play sessions. Her mum, Magdalena, says the sessions have been so important to improve Ruby's confidence and introduce them to other families.

Magdalena said: "I first noticed Ruby's eyes wobbling when she was nine months old. We were heading in to town to meet her nanna for breakfast, so we popped in to Specsavers and they recommended we go to the eye infirmary. That's when everything escalated.

"They sent us to our local hospital where they started talking about brain tumours and MRI scans. Then we got sent over to Newcastle Hospital and they started throwing around words like cancer. After three days on the neurology ward, they told us she had spasms nutans, which is head bobbing and

eye movements that goes away on its own. But when we went back to the eye infirmary, they disagreed and said it was nystagmus. So with that diagnosis, Ruby got some glasses, we continued as normal and nobody said anything else.

"Then when Ruby was two, we were at a regular eye check and our ophthalmologist asked us if we wanted to register her as vision impaired. My husband and I were so shocked. No-one had really explained how much her vision was affected.

"Since then, it's just been ongoing genetic testing. Nearly three years after first going to the hospital, and after whole genome testing, Ruby has been diagnosed with Leber congenital amaurosis.

"When we first got the diagnosis, we were really upset because of the degenerative nature of the condition. We were scared that Ruby would possibly have to navigate the world with little vision in the future, and of how hard that might be. We started a list of all the things we wanted to show her, like the dinosaurs at the Natural History Museum, to make sure she gets to see everything she can – while she can. We began researching clinical trials and treatments but there is nothing that can help at the minute. We were really upset.

"I then called Guide Dogs and spoke to a lovely lady who actually has the same condition as Ruby, caused by the exact same gene mutation. It was the best conversation I think I've ever had. She made us realise that everything is going to be okay. No matter what happens with Ruby's vision, she will still be able to do everything that everyone else can – sometimes just in a different way or with a little help. She showed us that Ruby's future is bright – she can have a great career, family life and can be happy.

"It's not the first time Guide Dogs have been there to lean on. When we first took Ruby to the eye infirmary they told me that I could apply for Disability Living Allowance (DLA), but the application is so long and confusing and I had no idea what I was doing. I contacted loads of charities asking for advice but Guide Dogs was the only one who said they could help, and even better they had a list of other things they could help with too. Through just contacting them about filling in the DLA, I've got so much support.

"We signed up to Guide Dogs My Time To Play before it started in the North East and about a month later, Habilitation Specialist Louise rang me for a chat about Ruby. Louise then came to the house to find out what skills Ruby needed to work on. We decided to concentrate on fine motor skills like opening jars.

"The sessions were really exciting. Ruby loves other children and people in general. Ruby's favourite part was when we got a watermelon and scooped out all the insides. Ruby was trying to pick out the seeds, getting really messy and then eating it. Usually, she doesn't like getting messy but now she's more open to it. Because of the sessions, she can now open jars and screw tops and we've nearly mastered closing them too. You could see her

“

No matter what happens with Ruby's vision, she will still be able to do everything that everyone else can.

”



Ruby's story

changing week by week. She's definitely grown her skills and her confidence. Learning through play is genius.

"The sessions were really good. I was really excited because I was looking forward to meeting other parents who have children with a vision impairment. The first session was Ruby and a little boy and it was so good just talking to his mum as someone who knows what I'm going through, knows about all the appointments and how you've got to watch them all the time. It was really lovely and I've kept in touch with her.

"Some parents at other playgroups don't understand. Ruby has good days where she hardly trips at all then bad days where she's constantly on edge, putting out her hands and falling over. There have been a few instances recently where I have been asked by other

parents 'Are her eyes ok now then?' But it was great going to Guide Dogs My Time To Play where other parents understood the ups and downs.

"I encourage everyone to try a Guide Dogs My Time To Play session and if we get the chance to take part in the future, we definitely would. We're really grateful to Guide Dogs for everything from this playgroup and helping with the education, health and care plan (EHCP), to the lady who helped us come to terms with Ruby's diagnosis. There is so much information and so many services Guide Dogs provides that people don't know about.

"It's still upsetting that my little girl's eyesight will probably get worse, but as long as we're there to support her and she maintains her 'I can do it' attitude, everything will be okay."



“

The sessions were really good. I was really excited because I was looking forward to meeting other parents who have children with a vision impairment.

”

Carlos's story

Many people choose to leave a legacy to Guide Dogs as they know our guide dog partnerships, and the wider services that we offer, give people with sight loss the chance to live the life they choose. Such a legacy helps to provide guide dogs like Marine, who changed Carlos's life from the moment they met.

Carlos was born with an eye condition called bilateral retinal coloboma, which means that his eyes did not fully develop when he was an unborn baby. Later in life, after a retinal tear, his sight deteriorated further, and his world turned upside down.

Carlos said: "When my vision took a turn for the worse, I was in an extremely dark place, I barely left the house and had to give up my job as Head of Technology in the corporate sector. No longer being able to work made me feel like I had lost my identity. My health suffered and my weight went up to 27.5 stone."

After being prompted by his family, Carlos contacted Guide Dogs for help. He received some long cane training, and help learning his local routes, then he applied for a guide dog and was matched with Marine in December 2018. Carlos said: "It was the best Christmas present I could ever ask for. I can't begin to tell you how much she has changed my life. The crippling fear of leaving my home has gone and I don't have to be reliant on others any more. I have now lost 12 stone and in 2022 took part in

a walking event called Kiltwalk for Guide Dogs.

"Not only has Marine helped me gain my independence, I now walk up to twenty thousand steps a day and have recently secured a job as a Legacy Engagement Officer for Guide Dogs in Scotland and NI, which has given me back my confidence and self-worth.

"My life is richer and more fulfilling than I could ever have imagined and it's only thanks to the generosity of

our supporters, such as those who leave a gift in their Will, that I now have Marine in my life – she is truly my life-saver. With Guide Dogs and Marine by my side I am now excited about my future and making a difference to the lives of others by talking to supporters and sharing the impact of legacy gifts to Guide Dogs."

To find out how gifts in Wills can help people with sight loss live life to the full, visit guidedogs.org.uk/giftsinwills.

Carlos and Marine at Kiltwalk



Name a Puppy

Coffi Lab reaches milestone fundraising target

Coffi Lab, a dog-friendly chain of coffee shops in Wales and the South West of England, have raised an incredible £45,000 for Guide Dogs since opening their first store in Monmouth in 2021.

Coffi Lab have since opened a further six branches in Abergavenny in Monmouthshire, Marlborough in Wiltshire, and the Cardiff suburbs of Llandaff, Llanishen, Rhiwbina and Whitchurch. Every site supports Guide Dogs in a variety of ways, from donating all proceeds from their opening day to in-store collections, by getting on board with our campaigns, or by donating 50p from every dog biscuit they sell.

Coffi Lab have also named four guide dog puppies through our Name a Puppy scheme, with another three puppies on the way. Staff come together to choose names each time, often selecting a name in memory of family members or friends.

Owner of Coffi Lab, James Shapland, said: "Supporting the local community is very important to us at Coffi Lab and we're delighted to be able to give back and make a difference to people affected by sight loss. We decided to choose Guide Dogs as our charity partner because we understand the difference that these wonderful creatures can make to people's lives, especially those with sight loss.

"Growing up, it was a cause my parents supported. I would always put some of my pocket money in the yellow collection dogs whenever we went shopping. Our range of dog biscuits, where we donate 50% of sales to Guide Dogs, has been particularly popular with customers and a simple way

for us to provide regular support to Guide Dogs.

"Our staff and customers have been really engaged with our fundraising and we've loved coming together to name guide dog puppies. We've also enjoyed having volunteers visit our open days, providing us with the opportunity to meet some of the people involved, including some local guide dog owners who have benefitted from Guide Dogs' life-changing services."

We would like to thank everyone at Coffi Lab for their continued support of Guide Dogs and for all their amazing fundraising efforts. For more information about naming a guide dog puppy, visit guidedogs.org.uk/nap.



Dear supporters,

I hope that the sun is shining wherever you are when this edition of Forward comes out.

One thing that always brings sunshine into my day is hearing about all the amazing things our supporters do to raise money for Guide Dogs. Whether you're selling a beloved collection like Karen Geobey, wearing a dog suit for a 10k run like Helen Lloyd Jones, or you've sung your heart out to name guide dog puppies like Dan Roberts and Curtis Magee, you're all helping us to ensure that people with sight loss can live the life they choose.

Thank you so much! Wishing you all a wonderful summer,

Deborah

Deborah Bourne

Director of Fundraising



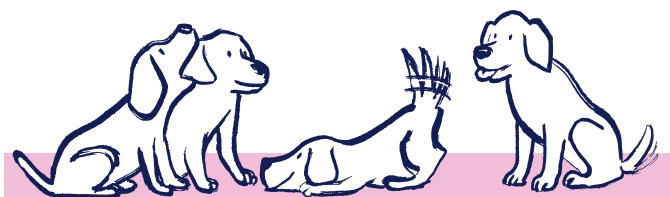
Curtis

▲ Singer Curtis Magee named a puppy Lexie after raising £2,500 at a series of concerts in Northern Ireland, including an annual event he organises called Fanfayre. Curtis's fans and friends from all over the UK and Ireland gather for his festival of country music and comedy, and Curtis also raises money for charities close to his heart. Curtis said: "I chose the name Lexie in memory of my late father, who was a huge inspiration to me with my musical career and as he loved dogs, especially golden retrievers, it was really nice to name this special dog in his memory."



Karen

▲ Karen Geobey, owner of Parsley & Thyme gift and homeware shop in Aberaeron, mid Wales, is a long-time fan of footwear brand Dr Martens. She raised more than £600 for Guide Dogs by selling off her collection of Dr Martens shoes and boots, then invited customers to donate their old pairs for her to sell. Karen said: "My parents were puppy raisers and we had retrievers. We lost my mother two years ago, and Guide Dogs was her charity, so she would be pleased I'm doing this."



When the ladies' and men's team captains at Leyland Golf Club near Preston, Lancashire, made Guide Dogs their 2022 charity of the year, they hoped to raise £15k. But, with support from the Lostock Hall and Penwortham fundraising group, they smashed that target and raised £20,000 to name four guide dog puppies. One pup is called Ruby, in memory of the ladies' captain's mum, the second William, in memory of the men's team captain's dad, the third Burgess, after the club's resident professional player, and the fourth is Leyland.

Thank you to our supporters

► Nine-year-old Charlotte Mylotte raised £720 by running and walking a 10k route around Worcester with support from her Dad, Ian, with friends and family cheering her on along the way. Charlotte said: "I wanted to fundraise for Guide Dogs because anyone who knows me knows how much I love dogs. Guide Dogs is an amazing charity that gives the visually impaired their independence back. I hope the money I have raised will change someone's life."



Charlotte



▲ Charity of the Year Partner Scotmid, whose brands include Scotmid Co-op, Semichem, Lakes & Dales Co-op and Scotmid Funerals, are aiming to raise a staggering £250,000 for Guide Dogs. So far the partnership has seen staff taking part in fundraising activities from in-store events and raffles, selling paw badges and pens, to tea parties and tombolas, sponsored walks and running challenges. They've even held a puppy naming competition, where staff and customers have been fundraising to name a guide dog pup.



Dan and Luna

◀ Dan Roberts, from Weston-super-Mare in Somerset, has raised £14,409 to name five guide dog puppies. Dan started fundraising as a tribute to his guide dog, a labradoodle called Luna, with whom he was partnered in 2019. He raises money primarily through singing live at gigs, where he encourages guests to donate and, if they do, he lets them enter a draw to suggest a name. The singer has so far named puppies Pancho, Star and Trixie, with Sinbad and Ace due to be born soon.



Helen

◀ Councillor Helen Lloyd Jones, 75, donned a fluffy yellow dog suit to run the Cardiff Bay 10k in aid of Guide Dogs Cymru, the Lord Mayor's chosen charity. A keen runner, she did her first full marathon in New York aged 71, but this was her fancy dress debut. Helen said: "It was very hot but I got around in 1 hour 43 minutes - a respectable time, given the costume. I approached the finish strutting my stuff and wiggling my hips for the crowds. Guide dogs really do change lives and bring a smile to everyone's face."

▶ Tom McInulty has raised £5,000 to name a guide dog puppy Bolt – an acronym of all the initials of his own guide dogs. Tom, from Southampton in Hampshire, said: "We picked Bolt as a tribute to my four amazing, life-changing guide dogs, Brunel, Otis, Lloyd and Toby. Thanks to these four beautiful dogs, I have been walking tall and proud for the past 33 years!" Tom raised the money by opting for donations in lieu of wedding gifts at his wedding to husband Paul last year.

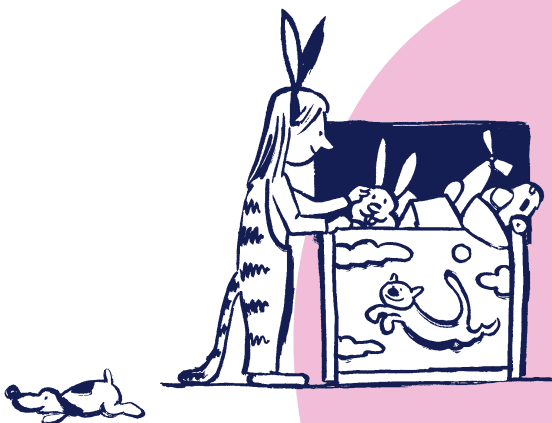


Bolt



Phoebe and dad Jez

◀ Her family's volunteering has inspired Phoebe Willis, aged 11, to climb Wales's highest mountain. Phoebe hiked to the top of Yr Wyddfa (formerly named Snowdon) in April with support from her father, Jez, raising £967. The family, from Lincoln, are puppy raisers and were looking after guide dog puppy Becci, a black Labrador, at the time of the climb. Sadly Becci was too young for the climb, so Phoebe took a toy guide dog puppy to the summit instead.



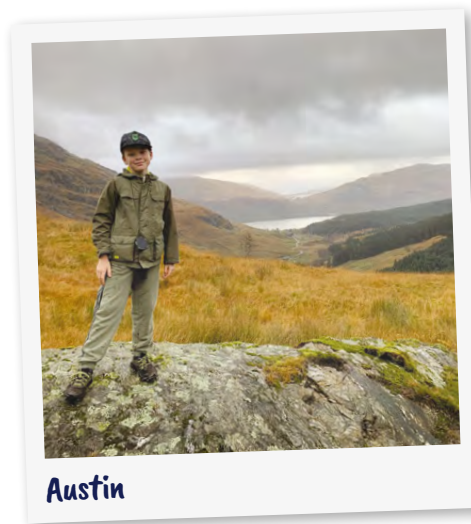
Our Guide Dogs charity shop, the only one of its kind in the UK, opened in 2014 and is based at our Midlands Regional Centre in Leamington Spa. Our team of shop volunteers help to run the show, sorting through donations and staffing the tills. Last year the shop – @guidedogsleamingtoncharityshop on Facebook – raised £35,000 towards our life-changing services, and the centre's staff and volunteers hope it will raise even more this year.

Thank you to our supporters

▼ Blue Watch at Knock Fire Station in Belfast have named a guide dog puppy Roselle, after a guide dog who led her owner to safety during the September 11 terrorist attack in New York in 2001. Michael Hingson was working on the 78th floor of the World Trade Center's Tower One, and Roselle helped him descend to safety when a hijacked passenger jet crashed into the tower, 18 floors above them. As a result of her heroic actions, the name Roselle has become special to the guide dogs community around the world, and Blue Watch chose to raise money to name a pup to mark 9/11's 20th anniversary.



▼ A day of collaboration at Liverpool Street station in London turned into fundraising success when the Bexley, Central London and Redbridge groups raised £2,793 together at a public collection in February. Starting early and running through to the evening, members from all three groups took shifts and brought new faces (including furry ones!) to ensure the day was as successful as possible.



▲ Austin Hewitt raised £1,341 by walking 46 miles along the Peddars Way trail from Suffolk into Norfolk over the Easter weekend. The 10-year-old has also donated £1 of his pocket money every week to Guide Dogs since he was six. Austin decided to take on the challenge after his grandad, Brian, suddenly lost his sight last year. Brian said: "I'm so proud of Austin for taking on this challenge – it is unbelievable what he's done."

In March, the Oxford fundraising group worked with the local Radcliffe Orchestra to put on an evening of brilliant classical music in aid of Guide Dogs. The ensemble, consisting mainly of healthcare workers from the John Radcliffe Hospital and other Oxford hospitals, performed pieces ranging from Berlioz to Tchaikovsky, with one of the fundraising group members playing the French horn. Proceeds from ticket sales and a collection raised more than £1,400.



► Massive thanks to Pentland Jaguar Land Rover who have raised £60,000! Staff at each of the dealership's six sites across Scotland asked customers if they would like to add a £5 donation to their car sale. The team also organised a charity dinner at The Mansefield Hotel in Elgin, with fantastic auction and raffle prizes. Pentland Jaguar has named six guide dog puppies through our Name a Puppy scheme.

Friends and family sighted guide training

When Lauren lost her sight completely at 26, she felt there was no hope. Things changed with the right support at the right time. As well as her partnership with her guide dog Grace, Lauren and her family also benefitted from our Friends and Family Sighted Guide Training.

Lauren said: "My family attended the training, so they could all get instruction on how to guide me. They had tried before, but they were grabbing me and swinging me around like a rag doll!"

"My husband, parents, sister-in-law and her husband all attended. It was another way of getting my confidence back. I could now do things like going clothes shopping with someone who knows me and what kind of stuff I like. Having someone there to guide me properly and calmly was a big help – another small step that helped me rebuild my life."

Lauren and her husband Daniel found the training so beneficial that they now volunteer as Sighted Guide Trainers, sharing their experiences with others. Daniel said: "Every minute I give to the charity, I know I'm helping others in the way that Guide Dogs have helped me." Thanks to support from her family, and guide dog Grace, Lauren is relishing life again.

Guide Dogs offers free training for anyone who wants to feel confident when guiding a family member or friend with a vision impairment. In our virtual, group sessions, participants can learn or refresh the skills to guide safely with expert support from our staff, and meet people in a similar situation for mutual support.

Sessions, which are up to two hours long, are open to those aged 12 or older (under 18s must be accompanied by an adult) and offer advice for guiding adults with sight loss. The friend/family member with sight loss is welcome to attend too. To register interest for an upcoming session, call Guide Line on 0800 781 1444 or visit guidedogs.org.uk/sightedguiding.



At Guide Dogs, we provide training on the basics of how to guide a person who has sight loss with confidence, skill and empathy. Much like learning how to perform first aid, sighted guiding is a useful life skill. It gives people the confidence to know how to act when they meet someone who's blind or partially sighted, and the guiding techniques to help. In addition to our Friends and Family Sighted Guide Training, our Introduction to Sighted Guide Training is open to anyone aged 18+ looking to learn the basics of sighted guiding. We also have a short video called Top Ten Tips for Sighted Guiding. For more information, or to sign up, visit guidedogs.org.uk/sightedguiding.

A day in the life of...

Our Guide Dogs Vet teams

As every dog owner knows, having access to great veterinary care is essential, and at Guide Dogs we are fortunate to work with a network of vets' practices across the country. We also have a dedicated team of vets and vet nurses 'in-house', based at our National Centre near Warwick, and at our Reading Hub in Berkshire, who conduct operations, are involved in local dog care, and who are our go-to for veterinary queries and advice.



Recently we caught up with vet Caroline Goulton and vet nurse Shannon Stacey to find out more about what a 'typical' day looks like for them. Caroline explains: "When we arrive at the vet centre in the morning we check who we have coming in that day, and I prepare for the operations and procedures. Like our veterinary facilities at the National Centre, we have everything here that you'd expect to find at a regular vet's practice, including a full operating theatre. The surgery we do here would include routine procedures such as neutering, and reactive surgery – the removal of a lump, for example, but we have all the equipment and expertise to do more complex investigations, if that's needed."

Shannon continues: "The dogs are brought in by their volunteer fosterers, puppy raisers, or sometimes by members of staff if they are dogs in training. We have all their information in advance but we check on the day too – for instance, if the dog is having an anaesthetic it's important they haven't eaten any breakfast, and we always carry out medical checks on the day. Then I'll settle the dog in to one of our indoor pens. If we have operations to carry out, they will be done in the morning, so we can monitor the dogs for the rest of the day."

A vet and vet nurse work very closely together – as Caroline explains: "I simply couldn't do my job without a great vet nurse. It takes two people to operate safely – while I'm doing my work, Shannon will be monitoring the dog continuously, and will alert me to any changes. It's an ongoing communication, so that we are looking after them to the highest standard." That care continues after the procedure, as the vet nurse looks after the dog as they rest and recover.

Caroline has over 20 years' experience as a qualified vet, including taking her Medicine Certificate (akin to a Masters' degree) in 2006. She said: "I worked in a practice close to the Reading Hub – we used to have a guide dog registered as a patient there, and I was always in awe of the bond they have with their dog. I live locally too, so when I saw that Guide Dogs was opening up a new clinic here, it felt like a gift! It really is a unique opportunity to work with all our dogs, whether that's puppies, dogs in training, working guide dogs, or the potential guide dog mums and dads of the future. And of course I'm working with a great team, from the vet nurses here, to colleagues and volunteers across the organisation."

Shannon also has a wealth of experience in private practice but jumped at the chance to bring her skills to Guide Dogs. She said: “I used to pass the Reading Hub on my way to work and we had a guide dog partnership which came into my clinic, so I was always intrigued about working more closely with guide dogs. Then I saw this role come up and thought – that’s my chance!”

Caroline picks up: “The afternoons in the clinic are busy with seeing referrals, examining new cases and answering queries and calls for advice from colleagues. We deal with a really wide range of topics – it could be anything from advice on flea and worming medication, getting a second opinion on an unusual gait, or asking us to look at an ECG trace of a dog’s heartbeat. As an organisation we will always work closely with our network of external vet practices, but by having our own vet teams at two of our main sites we can see referred cases, take on the local routine operations and procedures as appropriate, and act as a knowledge resource for colleagues right across the country. We’ll also use the afternoons to check stocks and order any new supplies we need, and set all our facilities back up so they’re ready for use.

“

It’s a real privilege to work with these dogs – they do an amazing job, so we give them the best care we possibly can.

”

“Towards the end of the day, volunteers and colleagues will arrive to pick up the dogs we’ve treated. We have brilliant ‘vet volunteers’ living locally who often take a dog who’s had an operation that day. Sometimes the anaesthetic can make them woozy or unsettled in the evening, so these are volunteers who have experience at handling post-op dogs, and can give them the support they need. Once all our dogs have been collected, we prepare for the next day – check our paperwork, give everything a final clean, and get ready for tomorrow’s patients. It’s a real privilege to work with these dogs – they do an amazing job, so we give them the best care we possibly can.”

See page 11 for news of the vet centres’ opening.



Congratulations to our new partnerships

New partnerships are listed by community team. Each listing details owner, guide dog, town, breed, Puppy Raiser, Breeding Dog Holder and Fosterer. Warm congratulations to all our new qualifiers.



Academy Team Midlands & East

Alan Tibble & Jackson
from Lincoln LxGR Joanne
Caddell from Wakefield
* Michael Spelman from
Coventry. Mrs Helena
Sharpe from Nottingham.

Academy Team North East

Victoria French & Lottie
from Scarborough CCRxL
Margaret Kenworthy
from Holmfirth * Steve
Parsons from Melksham.
Mr Adam Fincham from
Leamington Spa.

Helen McGrath & Burley
from Harrogate GRxGSD
* Edward Condry from
Daventry. Mr Peter
Thurling from Bingley.

Garry Turton & Jacey from
Keighley GRxL Sue Fletcher
from Sheffield. * Paula
Hendrick from Telford. Miss
Emma Dinnell from Leeds.

Academy Team North West

Susan Chippendale & Hero
from Preston GRxL Alison
Tanner-Davies from Wirral
* Margaret Buckingham
from Warwick. Mrs Inez
Price from Wigan.

Danny Gleeson & William
from Wolverhampton
GRxL Emma Pollard from
Rugby * Lynn Dignan from
Rugby. Mr James Pritchard
from Shrewsbury.

Graham Kiff & Hope from
Stoke-on-Trent GRxL
Annette Warrington from
Shenstone * Margaret
Buckingham from
Warwick. Mrs Yuko Tyack
from Shrewsbury.

Maria Schofield & Elwell
from Hyde GRxL Lynda
Hamblet from Bolton *
Margaret Buckingham
from Warwick. Mr Terry
Pemberton from Leigh.

Ian Ward & Jonty from

Telford LxL Susan Mackie
from Aberdeen * Katie
Harris from Redditch.
Mrs Caroline Caudle
from Shrewsbury.

Lauren Aimee
Wigglesworth & Barney
from Manchester L
Nicola Northover from
Liverpool * Neil Smith from
Northampton. Miss Hayley
Porter from Manchester.

Academy Team Scotland & NI

John Garvie & William from
Glasgow GRxGSD Erin
McGeddie from Bathgate
* Edward Condry from
Daventry. Mrs Mhari
Greenwood from Hamilton.

Christopher Jones & Luka
from Perth L Irene Mitchell
from Montrose * Mrs Carol
Clarke from Rushden. Mrs
Claire Stewart from Forfar.

Eddie Kelman & Razzer
from Denny GRxGSD Lynn
Kennedy from Arbroath
* Edward Condry from
Daventry. Mrs Fiona
McCrae from Forfar.

Louise McLeary & Cumbræ
from Kirkcaldy GRxL Cheryl
Ashworth from Lasswade
* Margery Mulley from
Leamington Spa. Sheonagh
Henderson from Forfar.

Academy Team South East

Ashley Campbell & Billy
from Rickmansworth
GRxL Susan Ball from
Birmingham * Charlotte
Knox-Wright from Hook.

Keith Lobley & Moss
from Reading GRxGR
Gillian Ruleman from
Manchester * Shirley
Thomas from Daventry.
Mrs Louise Millard from
Lutterworth. Mrs Victoria
Kean from Wigan.

Eileen Wild & Cass from
Dunstable GRxGR Anna
Croydon from Walton-

on-Thames * Mr Paul
Crowe from Kenilworth.

Academy Team South West & Wales

Robert Culverhouse & Loki
from Melksham LxGR Nora
Hunt from Bournemouth *
Pat Wilkinson from Rugby.
Miss Sarah Sheasby from
Bromsgrove. Mr Simon
Henderson from Bristol.

Wendy Dundas & Jesmond
from Bristol GR Joanna
Robb from Winchester
* Kath Saunders from
Shrewsbury. Mrs Louise
Neill from Alcester. Ms
Lucy Likeman from Bristol.

Cara Hughes & Mollie from
Eastleigh LxL Iris Chapple
from Martock * Katie
Harris from Redditch. Miss
Holly Smith from Bristol.

Belfast

Steven Barns & Rocky from
Lisburn GSD Julia Yarker
from Edinburgh * Joan
Raxter from Redditch.

Grainne Connolly &
Finley from Belfast
LxGR Barbara McClune
from Newtownabbey
* Lynne De Melo from
Melton Mowbray.

Karen Doherty & Star
from Glasgow GRxGR
Gillian Pemberton from
Dunfermline, Sheila
Marshall from Kinross
* Hayley Kerfoot from
Stourbridge. Mr Adrian
Claxton from Warwick. Miss
Jakki Roger from Forfar.

Dawn Hopper & Micky from
Crumlin GRxL Liz Jones
from Aboyne * Lesley
Reddy from Warwick.
Mrs Lynne Jones from
Stratford-upon-Avon.

Sarah Liggett & Sue
from Coleraine LxGR
Daphne Barfoot from
Belfast * Tracy Fallows
from Banbury.

Robin Myers & Pumpkin

from Bangor GRxL
Christine Gordon
from Newtownards *
Donna Kennedy from
Woodstock. Mrs Louise
Neill from Alcester.

Karen Underwood &
Fred from Carrickfergus
LXSTP Margaret Allsop
from Carnoustie * Mr Paul
Sharp from Coventry. Mrs
Lesley Wilson from Forfar.
Miss Carolyn Air from
Forfar. Mrs May Wilson
from Newtownabbey.

Birmingham

Elizabeth Baio & Rainbow
from Worcester L Julia
Owen from Cheltenham
* Mrs Lana Taylor from
Stratford-upon-Avon.
Mrs Claire Martindale
from Warwick.

Edward Buckley & Diesel
from Scunthorpe GSD
Anne-Marie Heenan
from Rugby * Mr Andrew
Campbell from Warwick.

Hannah Burgess & Eddie
from Milton Keynes
GR Pamela Lines from
Northampton * Gill Moss
from Banbury. Mr Adrian
Claxton from Warwick.
Mr Baldeep Dhillon
from Leamington Spa.

Denise Dewhurst & Mojo
from Birmingham GRxGR
Lynne Fear from Solihull *
Janet Leggett from Upper
Longdon. Mr John Pedley
from Leamington Spa.

Catherine Evans & Bella
from Cheltenham GRxGR
Philip Timms from Belper,
Pauline Clark from Belper
* Michael Jones from
Leicester. Mrs Louise Neill
from Alcester. Miss Tamsin
Armstrong from Warwick.

Sascha Hosler & Cici from
Hereford GRxL Joanne
Kerr from Coventry *
Ms Gillian Orno from
Leamington Spa.

Mark Long & Mary from
Stonehouse L Patricia

New partnerships

Storer from Hinckley
* Hilary Cooke from Bromsgrove. Miss Amanda Hancocks from Daventry. Mrs Vicki Johnson from Warwick. Madeline Bridget Wells from Leamington Spa. Mrs Susan Sturgess from Shipston-on-Stour.

Hannah Lowe & Wilma from Worcester GRxGR Jane Carrington-Wilkinson from Nottingham, Gill Weatherall from Nottingham * Mr Paul Crowe from Kenilworth. Mrs Sarah Tranter from Bromsgrove.

Stephen Mann & Joey from Worcester LxGR Mike Gurney from Worcester * Linda Mallette from Worcester. Mr Richard Phalp from Leamington Spa.

Michelle Marshall & Beris from Birmingham GRxL Sue Halford from Birmingham * Mr Maurice Wright from Warwick.

Lianne McKeon & Geoff from Birmingham LxGR Beatrice June Giles from Leamington Spa * Jessica Locke from Coventry. Mrs Judy Page from Bromsgrove.

Brian Munn & Blitzen from Birmingham LxGR Sarah Hallet from Warwick * Pamela Nash from Northampton. Mr Andrew Walling from Warwick.

Frankie O'Reilly & Guinness from Derby L Trevor Buckle from Lichfield * Diane Merker from Malvern. Miss Sarah Sheasby from Bromsgrove. Mr Mike Kupczenko from Kenilworth.

Simon Richards & Bailey from Milton Keynes STPxL Patricia Booth from Lutterworth * Emily Turley from Stourbridge. Mrs Linda Landsberg from Milton Keynes. Miss Leah McFadden from Southam.

Graham Rollason & Spencer from Sutton

Coldfield GRxGR Kath Kelly from Tamworth * Lindy Howlett from Bromyard. Ms Nicola Mills from Warwick.

Laura Turner & Charlie from Albrighton LxGR Terence Garrett from Stourbridge * Linda Monk from Worcester. Mrs Lindy Hobbs from Droitwich.

Alison Wallduck & Emery from Milton Keynes LxGR Ellen Holt from Tewkesbury * Helen Sergison from Dudley. Mrs Danielle Vaughan from Wigston. Mrs Karen Charl from Coventry.

Selena Williams & Nikko from Gloucester GRxL * Lyndsey Baines from Market Harborough. Mrs Louise Neill from Alcester. Miss Georgia Sharp from Leamington Spa.

Bristol

Kris Gegov & Elki from Portishead GRxL Phil Kalisz from Barton-le-Clay * Mrs & Mr Esther & Peter McCafferty from Woodford Green.

David Ley & Millie from Plymouth GRxL Alex Rees from Ringwood * Ann Buxton from Leicester. Mrs Louise Millard from Lutterworth. Ms Kate Neill from Bristol.

Cardiff

Ashley Greenaway & Shane from Swansea L David Hopkins from Yeovil, Sally Schofield from Shepton Mallet * Howard Dorrell from Worcester. Mrs Carrie Garrett from Cardiff.

Roger Hall & Max from Penarth LxGR Anna Freeman from Bristol * Pat Wilkinson from Rugby. Miss Sarah Sheasby from Bromsgrove.

Louise Jenkins & Sian from Lampeter GRxL Sheila Ross from Bristol

* Natalie Durrant from Redditch. Miss Cecilia St Clair from Cardiff.

Nicholas Lancaster & Benje from Brecon LxL Alison Blackwell from Exeter * Katie Harris from Redditch. Mr Andrew Rees from Cardiff.

Angharad Josephine Rhodes & Sarah from Caergybi. L Tracey Ellis from Bristol * Hilary Cooke from Bromsgrove. Miss Amanda Hancocks from Daventry.

Lisa Trotman & Luna from Neath LxGR Joanna Mitchell from Bath * Leigh Court from Balsall Common. Miss Charlotte Hammond from Reading.

Osian Williams & Jasper from Pwllheli GR Maria Cassidy from Torquay * Susan Griffiths from Derby. Mr & Mrs Wetherell from Birmingham. Mrs Sue Phillips from Cardiff.

Coventry

Chris Atkins & Vinny from Ashby de la Zouch GSD Liz Levis from Leamington Spa * Joan Raxter from Redditch. Mrs Janet Clifford from Wellingborough. Miss Laura Pillow from Leamington Spa.

Nathan Castledine & Akira from Nuneaton L * Christina Sibbald from Wantage. Mrs Sharon Broer from Coventry. Mrs Liz Gilbert from Leamington Spa.

Lisa Houghton-Read & Burghley from Henley-in-Arden CCRxL Graham Moorcroft from Derby * Steve Parsons from Melksham. Mr Adam Fincham from Leamington Spa. Miss Lauren Grainger from Leamington Spa.

Ryan Kelly & Radnor from Nuneaton L Rob

Armstrong-Haworth from Barmouth, Jacqueline Kandler from Wells * Rosemary Jackson from Harbury. Mrs Tricia Collier from Warwick. Mr Brian O'Sullivan from Leamington Spa.

Nicola Lapworth & Helios from Kenilworth LxGR Mandy Price from Kidderminster * Linda Mallette from Worcester.

Andrew Morris & Kale from Hinckley LxGR Linda Whitwell from Northampton * Linda Mallette from Worcester. Miss Abigail Bishopp from Leamington Spa.

Martyn Parker & Harper from Warwick GSD Diane Wilkes from Bromsgrove * Linda Tindall from Coventry. Mrs Dawn Herbert from Leamington. Mr Darren Wright from Leamington Spa.

Rebecca Robertson & Quizzie from Wigston GR Madge Nightingale from Birmingham * Mr Adrian Claxton from Warwick. Mr Michael Canham from Coventry.

Rashmikan Shah & Ben from Northampton GRxGSD Claire Hutchinson from Kidderminster, Shaun Williams from Leamington Spa * Christine Collins from Leamington Spa. Mr Paul Black from Solihull. Mr Niall Golden from Warwick.

Ross Spriggs & Sam from Wellesbourne L Anna Toms from Huntingdon * Miss Sarah Sheasby from Bromsgrove. Miss Dominique Saveker-Hughes from Leamington Spa.

Jane Thompson & Pudding from Northampton GR Edward Sadek from Warwick * Linda Sheehan from Evesham. Mrs Florence Ravenhall from Rugby.

Rob Waite & Gordon

from Leamington Spa
GRxL Morna Farquhar
from Redditch * Helen
Hinchliffe from Derby.
Mr Adrian Claxton from
Warwick. Mr David Hurst
from Leamington Spa.

Edinburgh

Matthew Adams &
Brenda from Edinburgh
GRxL Sandra Edgar
from Dumfries * Linda
Atkins from Stratford-
upon-Avon. Miss Elaine
Thomson from Arbroath.

Stuart Beveridge &
Dax from Lochgelly
GRxL Laurie Matthew
from Perth * Sarah
Kite from Birmingham.
Mr Paul Crowe from
Kenilworth. Mrs Kerry
Walker from Montrose.

Gilbert Emslie & Shadow
from Angus L Calum
Gibson from Dunfermline,
Alastair Robson from
Dunfermline * Mr Pete
Gall from Carnoustie.
Mrs Anne Cameron
Batty from Edinburgh.

Gloria Foxton & Dollar
from Alloa GR Catriona
Adams from near Dalkeith,
Margaret Morrison
from North Berwick
* Andrea Kane from
Leamington Spa. Ms Carol
Stewart from Dundee.

William Gibson & Frankie
from Edinburgh L David
King from North Berwick
* Sian Simmons from
Kenilworth. Ms Wendy
Medlicott from Coventry.
Mrs Beryl Stewart from
Auchterarder. Miss Zoe
Cartwright from Forfar.

Graham Marshall &
Clova from Clackmannan
LxGR Dorothy Gourlay
from Dunfermline *
Tracy Fallows from
Banbury. Miss Clair
Trethowan from Forfar.

Margaret Martin & Jessie
from Brechin LxGR Andrew
Kemp from Glasgow,

Helen Jordan from
Glasgow * Tracy Fallows
from Banbury. Miss Lyn
Archer from Forfar.

Stephen Shaw & Archie
from Livingston GRxGR
Margaret Leaver from
Perth * Catherine Waddell
from Redditch. Mrs Louise
Neill from Alcester. Mrs
Lesley Wilson from Forfar.

Mateusz Sobon & Haggis
from Aberdeen L Caroline
Martin from Shillford *
Rosemary Jackson from
Harbury. Mrs Tricia Collier
from Warwick. Mrs Sally
McLean from Forfar.

Sheanagh Swanney &
Colinton from Rosyth
GSD Barry Aspinall
from Haddington * Mrs
Victoria Rash from
Kenilworth. Mrs Nikki
Henry from Carnoustie.

Sharron Taylor &
Adam from Cardenden
L Jade Angus from
Carnoustie * Neil Smith
from Northampton.

Exeter

Haydn Callow & Thomas
from Somerton GRxL
Sandra Davies from
Blandford Forum * Sian
Simmons from Kenilworth.
Miss Nina Houlden
from Exeter. Ms Chui
Fan Lee from Exeter.

Derek Malcolm Chivers
& Derek from Honiton L
Jo Innes from Swindon
* Philip Crowther from
Evesham. Mrs Dulcie Parry
from Rugby. Miss Lindsay
Dudley from Cullompton.

Roseanne Fish & Lady
from Saltash GRxL Helen
Lewis from Bristol, Sue
Arthur from Cheltenham
* Sian Simmons from
Kenilworth. Mrs Jonelle
Arrowsmith from Exeter.

Stuart Hale & Artie
from Bridgwater L
Donna Thornalley from
Teignmouth * Rosemary

Jackson from Harbury.
Mrs Tricia Collier from
Warwick. Ms Wendy
Finch from Exeter.

Deborah Jones & Niko
from Plymouth GRxL Karen
Damerell from Plymouth
* Charlotte Knox-Wright
from Hook. Ms Paula
Mills from Exeter.

Jayson Jones & Bramble
from Bridgend GRxGSD
Zoe Hamilton-Wynne
from Plymouth, Susan
Underwood from Plymouth
* Edward Condry from
Daventry. Mrs Marilyn
McAuley from Plymouth. Mr
David West from Bristol.

Sarah Jukes & Kate
from Taunton GRxGR
Robert Weston from
Lifton * Mr Paul Crowe
from Kenilworth. Ms Liza
Page from Exeter.

Bernard Lawrence &
Stevie from Exeter CCRxL
Anthony Chamberlain
from Taunton * Steve
Parsons from Melksham.
Mr Adam Fincham from
Leamington Spa. Mr Frank
Kelsall from Exeter.

Iain Lucas & Arty from
Portsmouth LxGR Gail
Saunders from Oxford *
Pat Wilkinson from Rugby.
Miss Sarah Sheasby from
Bromsgrove. Mr Andrew
Styles from Bristol.

Shirley Musgrove &
Gorby from Torquay
GRxGR Maria Cassidy
from Torquay * Mr Ian
Russell from Exeter.

Martha Page & Wilma
from Exmouth GRxL Mark
Davison from Okehampton,
Eileen Trethewey from
Torquay, Colin Sanderson
from Plymouth * Mrs
Marie McLean from
Newton St Cyres.

Linda Richards &
Joanna from Seaton
GRxL Elizabeth Purdon
from Barnstaple, Alison
Bamford-Elsdon from
Newton Abbot * Ms Sarah

Bartrum from Exeter.

Anthony Joshua Roberts
& Isla from Milbrook
L Lynn Young from
Wokingham * Mrs Sheila
Hemming from Evesham.
Mrs Denise Kinsella from
Reading. Miss Charlotte
Godfrey from Bristol.

Eve Sale & Zena from
Merriott GRxL Denise
Baldwin from Paignton
* Sian Simmons from
Kenilworth. Miss Grace
Selley from Cullompton.

Vicky Sherry & Betty
from Helston GSD Angela
Holland from Exmouth,
Sylvia Waite from Exeter
* Joanne Chambers from
Redditch. Mr Ray Taylor
from Teignmouth.

Olivia Templeton &
Elizabeth from Plymouth
GRxL Kirsty Hardee
from Teignmouth * Paula
Hendrick from Telford. Mrs
Holly Barr from Exeter.

John Tovey & Olli from
Bristol L Carol Harris
from Kingsbridge * Philip
Crowther from Evesham.
Mrs Dulcie Parry from
Rugby. Ms Camilla
Barrow from Dawlish.

Catherine Williams
& Spencer from
Llanbradach GR Gill
Manning from Hornchurch
* Kath Saunders from
Shrewsbury. Mrs Louise
Neill from Alcester.

John Woolsgrave & Edmund
from Tenby LxGR Myriam
Steadman from Manea
* Philip Maycock from
Bromsgrove. Miss Alice
Barrett from Woodford
Green. Ms Jannette
Toomey from Bristol.

Glasgow

Kimberley Adams &
Skye from Paisley L
Carol McDonald from
Edinburgh * Rosemary
Jackson from Harbury.
Mrs Tricia Collier from

New partnerships

Warwick. Mr Colin Murray from Forfar. Mrs Sarah Sharples from Hamilton.

Peter Allan Clark & Glen from Coatbridge STPxL Nimmi Whitelaw from Glasgow * Emily Turley from Stourbridge. Mrs Linda Landsberg from Milton Keynes. Mr George Currie from Glasgow.

Fiona Foley & Cally from Paisley GRxL Lyn Ryan from Hillsborough * Donna Kennedy from Woodstock. Mrs Louise Neill from Alcester. Mrs Sarah Sharples from Hamilton.

Lynn Gordon & Anne from Bellshill GR Margaret Knox from Falkirk, Alex Kemp from Livingston * Susan Griffiths from Derby. Mrs Anne Millar from Larkhall.

Kathaleen Jackson & Tango from Kirkwall LxGR Lorraine Ralphs

from Aberdeen, Carol Wood from Dundee * Michael Spelman from Coventry. Miss Lucy Cassidy from Montrose.

William McDonald & Lawrence from Irvine STPxL Anne Roberts from Edinburgh, Sheila Mackenzie from Edinburgh * Mrs Linda Landsberg from Milton Keynes. Miss Elaine Thomson from Arbroath. Ms Nicola Bryce from Kirriemuir.

Ann McWilliams & Chester from Glasgow STPxL Mary Leckie from Glasgow * Emily Turley from Stourbridge. Mrs Linda Landsberg from Milton Keynes. Mrs Carolyn McMillan from Arbroath.

Catriona Menzies & River from Invergarry STPxL Maria Thorburn from Glasgow * Mrs Linda Landsberg from Milton Keynes. Mrs Claire Stewart

from Forfar. Mrs Jennifer Lovegrove from Forfar.

Zein Al Maha Oweis & Mitch from Glasgow GRxGR Chris Blakey from Falkirk * Hayley Kerfoot from Stourbridge. Mr Adrian Claxton from Warwick. Mrs Carey Pegrum from Hamilton.

Fiona Quarrell & Bill from East Kilbride GRxGR Lorna Gamble from Dunfermline * Mrs Mary McNee from Glasgow.

Steven Rutherford & Evie from Glasgow GRxL Pat Curson from Dunkeld * Steve Giles from Leicester. Mr Craig Anderson from Forfar. Miss Tracie Mallaghan from Hamilton.

Philip Sime & Striker from Inverness L Margaret Robertson from Edinburgh * Brian Mullis from Coventry. Miss Amanda Hancocks

from Daventry. Mrs Joan Hill from Hamilton.

Hull

Sheila Dent & Connie from Hull L Lisa Tobin from Wakefield, Thelma Brown from Hexham * Michael Drabble-Jones from Henley-in-Arden. Miss Charlotte Unsworth from Bolton. Ms Sandra Bloxham from Beverley.

Michelle France & Thomas from Hull GRxGR Karen Howarth from Huddersfield * Chris Cavanagh from Cheltenham. Mr Andrew Tate from Beverley.

Sarah Marshall & Ziggy from Bridlington GR Linda Patricia Myatt from Bradford * Alison Nuttall from Redditch. Mr Mark Edwards from Warwick. Mr Roddy Horton from Beverley.



Leeds

Julia Allison & Boo from Brighouse L Beverley Kempson from Hexham * Natalie Griffith from Warwick. Miss Rachel Ashley from Nuneaton. Ms Sarah Dunnett from Sheffield.

Anne Bennett & David from Wakefield GRxL Barbara Floyd from Newark * Helen Hinchliffe from Derby. Mr Adrian Claxton from Warwick. Mr Stephen Hillier from Sheffield.

Stuart Bisland & Finn from Halifax GRxL Mandy Priest from Lymm * Charlotte Knox-Wright from Hook. Mrs Susan Lomas from Warrington.

Geoff Hirst & Vince from Barnsley GRxL Brian Cunningham from Dundee * Helen Hinchliffe from Derby. Mr Mark Edwards from Warwick. Mrs Claire McDiarmid from Forfar.

Beverly Kitchen & Holly from Sheffield GRxL Shaunna McCann from Whitley Bay * Patricia Hicks from Sutton Coldfield. Ms Margaret O'Sullivan from Newcastle upon Tyne.

Graham Owen & Jess from Wakefield L Christina Ronald from Consett * Dr Elizabeth Lidbury from Sheffield.

Eleanor Pooley & Angie from Doncaster L Anne Lifsey from Doncaster * Margaret Lyson-Marshall from Southam. Mrs Lynn Richards from Coventry. Mrs Frances Attwood from Beverley.

Parlad Riyat & Levin from Leeds LxGR Maureen Martin from Sheffield * Michael Spelman from Coventry. Mr Marc Rampling from Beverley. Miss Jenna Ogilvie from Brechin. Christine Ross & Poppy

from Doncaster L Alex Richardson from Scissett * Mary Smith from Moreton-in-Marsh. Mrs Carol Clarke from Rushden. Mr Peter Duff from Sheffield.

Brittany Stead & Purdey from Leeds GRxL Barry Cornes from Hexham * Margaret Buckingham from Warwick.

Liverpool

Joanne Birch & Charlie from Warrington GRxL Eileen Howes from Altrincham * Jo Bater from Derby. Mrs Jan Johnson from Manchester. Ms Katherine Mills from Leeds. Miss Abigail Keefe from Leigh.

Allan Brough & Eva from Neston LxGR Karen Grimwood from Tarporley * Lisa Smith from Warwick. Miss Danielle Causby from Manchester.

Janet McCormick & Bebe from Liverpool GRxL Annette Hadwen from Shrewsbury * Adele Sullivan from Banbury. Mr & Mrs Wetherell from Birmingham. Mrs Susan Dennis from Wigan.

London

Michael Adams & Ford from Merton GSD David Thomas from Hatfield * Clare Pinks from Rugby. Mrs Victoria Rash from Kenilworth. Miss Cassandra Scott Hayward from London.

Paula Allen & Cain from Reading STPxL Stacey Crampton from Chelmsford * Gail Winnett from Birmingham. Mrs Linda Landsberg from Milton Keynes. Dr Caroline McGlynn from Ilford.

Steven Bowers & Dabble from Wokingham LxGR Bridget Goldsmith from Chelmsford.

Margo Cargill & Pippa from London LxGR Susannah Strawson from Tonbridge, Susan Rowland from Tonbridge * Elizabeth Evans from Droitwich. Mr Hugh Brown from Coventry. Ms Elaine Scott from London.

Sharon Grennan & Hattie from London GRxL Caroline Kiernan from Deal * Sue Wilkins from Rugby. Ms Sue Hudson from London.

Frederick Hicks & Jim from Bedford LxGR Richard Baxter from Swadlincote * Linda Mallette from Worcester.

Lauren Jackson & Sugoi from London GR Pat Tuffs from Dartford * Julian Graeme Paynton from Banbury. Ms Donna Irwin from St Albans.

Andrew Jones & Mario from Ruislip LxGR Jeff Jeffery from Chippenham, Anne Cole from Swindon, Margaret Rose from Wantage * Amber O'Brien from Warwick. Mrs Carol Clarke from Rushden. Miss Emerline Su from London.

Richard Jones & Ian from Essex LxGR Jodie Noakes from Watford * Pat Wilkinson from Rugby. Miss Sarah Sheasby from Bromsgrove. Mrs & Mr Esther & Peter McCafferty from Woodford Green.

Barbara Norton & Arthur from Bedford LxGR Michael Jones from Pevensey * Mrs Lesley Gilbert from St. Albans.

Scott Rentle & Ronald from Ruislip LxGR Sara Burrell from Maldon * Mr Narinder Bhatt from London. Mr Eugene Lynch from London.

Stephen Steppens & Xena from London L.

Christine Woodhams & Preston from London GRxL Angela Dunn from Northallerton * Ann Buxton from Leicester.

Miss Heather Hutchinson from Sunderland. Mrs Sarah McCarthy from Middlesbrough.

Maidstone

Benjamin Alexander & Lewis from Eastbourne L Toni Voller from Godalming * Diane Merker from Malvern. Miss Sarah Sheasby from Bromsgrove. Mrs Joanne Wilkinson from Maidstone.

Colin Audus & Cara from Whitstable LxGR Rae Gibbens from Whitstable * Rosemary Fox from Leamington Spa. Mrs Claire Rotter from Maidstone.

Stephanie Brown & Milo from Brighton LxGR Donald Baker from Sevenoaks * Jessica Locke from Coventry.

George Coleman & Ron from Northampton LxGR Geoff Beetles from Dartford, Beverley Dackombe from Whitstable * Kathryn Harmer from Solihull. Mrs Lynn Richards from Coventry. Mrs Julia Bailey from Maidstone. Mr Madis Kalda from Maidstone. Mrs Denise Tate from Maidstone.

Claire Grant & Charlie from Ramsgate L Harprit Makwana from Pinner * Howard Dorrell from Worcester. Mr Tony Mundella from Maidstone.

Gandia Howell & Cilla from Ilford LxGR Sarah Jayne Pascall from Gillingham * Lynne De Melo from Melton Mowbray. Mr Craig McAteer from Maidstone.

Kevin Lyon & Topper from Folkestone GRxL Julia Decoine from Tonbridge * Donna Kennedy from Woodstock. Mrs Louise Neill from Alcester. Mr Gene Roberts from Maidstone.

Barrie Penton & Miller from Ramsgate GRxL Jan

New partnerships

Merrett from Longfield,
Susan Langdon from
Hartley * Sue Wilkins
from Rugby. Miss
Charlotte Crayford
from Sittingbourne.
Mrs Barbara Gibbs
from Maidstone.

Barbara Thiaradt &
Baxter from Canterbury
L Gill Maynard from
Southampton * Philip
Crowther from Evesham.
Mrs Dulcie Parry from
Rugby. Mrs Heather
Redman from Maidstone.

Daniel James Wright &
Brodie from Dartford
CCRxL Sarah Bailey from
Maidstone, Brian Killick
from Sheerness * Steve
Parsons from Melksham.
Mr Adam Fincham from
Leamington Spa. Mr Simon
Cope from Maidstone.

Manchester

Kim Johnson & Zivah
from Macclesfield LxL
Valerie and Nigel Brown
from Northallerton *
Sue Lancaster from
Bedford. Mr Peter Meads
from Warwick. Miss Ella
Mackenzie from Bolton.

Jackie Barnett & Morgan
from Manchester L Mike
Greenwood from Burton
upon Trent * Mrs Lana
Taylor from Stratford-
upon-Avon. Mrs Shirley
Jukes from Wigan.

Norma Brown & Jaykay
from Rochdale LxGR
John Wells from Chorley
* Elizabeth Evans from
Droitwich. Mr Hugh Brown
from Coventry. Mr Michael
Stewart from Lowton.

Stephen Carson & Bumble
from Mossley L Linda
Stonley from Birkenhead
* Ian & Irene Scott from
Warwick. Miss Sarah
Sheasby from Bromsgrove.
Mr Terry Pemberton
from Leigh. Ms Deborah
Roberts from Manchester.

John Currie & Derek
from Willaston GRxL

Glynis Telford from
Northwich * Steve Giles
from Leicester. Mr Paul
Clare from Manchester.

Laura Dalton & Derek
from Burnley GRxGR
Amanda Percival from
Newport * Jane Ekins from
Leamington Spa. Mr Paul
Black from Solihull. Mr
James Ramsey from Bolton.

Chelsea Greeley & Charlie
from Leigh L Laura Day
from Market Drayton, Susie
Bell from Telford * Glynis
Nixon from Warwick. Mrs
Diane Sammon from Bolton.

Anthony Green & Peegee
from Leek L Helen Dagnall
from Shrewsbury, Susan
Nicholas from Telford
* Gail Winnett from
Birmingham. Miss Claudia
Doherty from Bolton.

William Guest & Brandy
from Leyland GRxGR
Maureen Martin from
Sheffield, Sylvie Greig from
Wirral * Lindy Howlett
from Bromyard. Miss Sian
Bell from Manchester. Mrs
Diane Bamber from Bolton.

Rachael Macfarlane &
Des from Burscough L
Stephen Hutchinson from
Doncaster * Joy Davis from
Billesdon. Miss Danielle
Causby from Manchester,
Mr Jack O'Reilly from
Manchester, Ms Angela
Brown from Warrington.

Alan Shannon & Ruby
from Cheadle GRxL
Susan Lees from Church
Stretton * Ann Buxton
from Leicester. Mrs Louise
Blackhurst from Bolton.

Tanya Shimmin & Delsie
from Isle of Man GRxL
Rwth Sloan from Cheadle *
Patricia Hicks from Sutton
Coldfield. Miss Sian Bell
from Manchester. Mrs
Susan Ridley from Carlisle.

Lorraine Virco & Brenda
from Preston LxGR * Linda
Mallette from Worcester.
Miss Elle Gascoyne
from Manchester.

Newcastle

Steven Angus & Rhubarb
from Darlington GRxL
Sue Ward from Retford
* Margaret Buckingham
from Warwick.

Stephen Beresford
& Brearley from
Middlesbrough GRxL
Mark Wilson from
Southport * Jane Adams
from Rugby. Ms Wendy
Jackson from Leigh.

Christopher Colbert &
Bracken from Denaby
GRxL Rebecca Deal
from Falkirk * Sarah
Kite from Birmingham.
Mr Paul Crowe from
Kenilworth. Mrs Krystina
Dewhurst from Bolton.

Mary Hall & Zoom from
Seaham GRxL Maureen
Evans from Warrington
* Helen Hinchliffe from
Derby. Mr Adrian Claxton
from Warwick. Mr Chris
Nightingale from Wigan. Mr
Paul Mather from Leigh.

Frank Lewis & Franklin
from Newcastle upon
Tyne GRxGR Stuart
Donaldson from Cupar
* Mr Michael Rudge
from Solihull. Mrs Fiona
Shawcross from Yarm.

Emma Oldfield & Joey
from Wakefield GRxL
Lorraine Helen Douglas
from Sunderland *
Pauline Macpherson from
Stratford-upon-Avon.

Frances Rohan & Pacha
from Durham LxL Bev
Cole from Stockton-on-
Tees * Sue Lancaster
from Bedford. Mr Peter
Meads from Wick. Miss
Rosario Luque Martin from
Newcastle upon Tyne.

Janet Sample & Hugo from
Gateshead GRxL Trevor
Cowling from Yarm * Helen
Hinchliffe from Derby.
Mr Adrian Claxton from
Warwick. Miss Kathryn
Watts from Whitley Bay.
Ralph Sample & Chelsea

from Gateshead LxGR
Shawn Fenwick from
Ashington * Elizabeth Evans
from Droitwich. Mr Hugh
Brown from Coventry.

Philip Sawyer & Elton from
Ferryhill GRxL Margaret
Robertson from Edinburgh
* Ms Carol Stewart from
Dundee. Ms Alison Binalle
from Newcastle upon Tyne.

Megan Stephenson
& Bobbie from
Middlesbrough GRxL Craig
Mallery from Hexham * Sue
Walters from Stourbridge.
Mrs Lynne Jones from
Stratford-upon-Avon.

Sally Stoker & Kona from
Selby GSD Lisa Davenport
from Stockport * Joan
Raxter from Redditch.
Mrs Christine Crompton
from Manchester.
Mrs Pat Martin from
Middlesbrough.

Elaine Tambin & Abby
from Durham LxGR
Adrian Grieve from
Hillsborough * Mr & Mrs
Straker from Stratford-
upon-Avon. Mr Alastair
Holmes from Newcastle
upon Tyne. Mr Stephen
Bowser from Redcar.

Michael Unsworth & Tula
from Durham L Denise
Shute from Inverurie,
Christine Arksey from
Morpeth * Linda Langman
from Axminster. Mrs Sally
Thomas from Worcester.
Ms Katie Robertson
from Cramlington.

David Wilkinson & Lily
from Durham L Susan
Flush from Wirral * Mrs
Sarah Little from Leigh.
Mrs Kirsty Thomson from
Newcastle upon Tyne.

Sheila Woodcock & Suzie
from Darlington GRxL
Lorna Money from Glasgow
* Mr Michael Rudge
from Solihull. Ms Lorna
Smith from Sheffield.
Mrs Diane McCreadie
from Middlesbrough.

Nottingham

Lee Bridgman & Diesel from Heanor L Diane Withers from Lichfield * Sharon Bailey from Measham. Mrs Tricia Collier from Warwick. Mrs Sarah Greaves from Nottingham.

Christopher Craig & Dan from Milton Keynes LxGR Fiona Dalrymple from Stratford-upon-Avon * Tracy Fallows from Banbury. Mrs Tracey Rhoades from Nottingham.

David Greenwood & Angus from Belper GRxL Yvonne Hopkins from Shipston-on-Stour * Sian Simmons from Kenilworth. Miss Tamsin Armstrong from Warwick.

Rosa Hartley & Coop from Derby GRxGR Hayley Kerfoot from Stourbridge, Fiona Parkinson from Kidderminster * Hayley Kerfoot from Stourbridge. Mr Adrian Claxton from Warwick. Miss Zoe

Bradbury from Nottingham.

Stuart Parker & Woody from Cromer GR Maria Fellows from Sutton Coldfield * Fiona & Debbie Reedy & Baird from Evesham. Mr Dave Kettle from Kenilworth.

Suzanne Rawlings & Biscuit from Mablethorpe LxGR Helen Reed from Southam * Linda Mallette from Worcester. Mrs Elaine Oliver from Radway Warwick.

Claire Robotham & Jacqui from Nottingham GRxL Nicola Scrivens from Cambridge * Natalie Durrant from Redditch. Craig Hulatt from Nottingham.

Julie Williams & Rebel from High Peak LxGR Louise Bellamy from Coventry, Andrea Parlett from Solihull * Lisa Smith from Warwick. Mr Ian Dawson from Nottingham.

Peterborough

Kathy Bye & Hannah from Ely GRxGR Vibeke Haslam from Cambridge * Jane Ekins from Leamington Spa. Mr Paul Black from Solihull. Mrs Jackie Manning from Uppingham.

Elin Williams & Lucy from Ely LxGR Lynda Hill from Evesham, Debra Coleman from Gloucester * Lisa Smith from Warwick. Mrs Claudia Webb from Leamington Spa.

Fiona Williams & Malvern from Cambridge L Trudie Guise from Nuneaton * Mrs Lynn Richards from Coventry. Mr Markus Backman from Warwick.

Hannah Young & Archie from Felixstowe L Ann Simonds from Nailsea * Neil Smith from Northampton.

Reading

Eran Cutcliffe & Lydia

from London GRxL Pat Sims from Erith * Ann Buxton from Leicester. Mrs Louise Millard from Lutterworth. Mr Richard White from Maidstone.

Linda Staib-Jensen & Regan from Sunningdale GR * Linda Sheehan from Evesham.

Shrewsbury

Stella Bates & Pai from Willenhall L

Joshua Brassington & Spencer from Stoke-on-Trent L Donna Gabbittas from Chesterfield, Matthew Judge from Leeds * Sharon Bailey from Measham. Mrs Tricia Collier from Warwick. Mrs Anna Owen from Bolton. Mrs Gillian Openshaw from Leigh. Miss Sara Willhoit from Shrewsbury.

Ray Feeney & Uke from Stoke-on-Trent L * Mrs Nicola Humphries



New partnerships

from Shrewsbury.

Colin Jones & Bee from Oldbury L Linda Richardson from Newcastle upon Tyne * Margaret Lyson-Marshall from Southam. Mrs Lynn Richards from Coventry. Miss Elizabeth Mapp from Manchester. Mrs Sian Bowdler from Shrewsbury.

John Moore & Quasia from Bewdley GR Terry Elks from Newcastle-under-Lyme * Mr Adrian Claxton from Warwick. Mrs Claire Wyke from Shrewsbury.

Matthew Oakley & Pico from Brierley Hill L

Jeanette Sanderson & Rachel from Newcastle-under-Lyme GRxGR Margaret Elizabeth Edmondson from Huddersfield, Elizabeth Ellis Churchill from Leeds * Andrew Watson from Leamington Spa. Mrs Kath Price from Wigan.

Mrs Emma Trevor-Jones from Shrewsbury.

Simon Tideswell & Terri from Stoke-on-Trent L

Jonathon Watkiss & Peter from Stafford GRxGR Nicola Ryan from Liverpool * Catherine Waddell from Redditch. Mrs Louise Neill from Alcester. Mr Michael Carey from Shrewsbury.

Southampton

Benjamin Good MBE & Stamp from Fareham LxGR Richard Bussien from Harleston *

Philip Maycock from Bromsgrove. Dr Rosanna Smith from Winchester.

Ruth Hollingshead & Mocha from the Isle of Wight L Sue Spicer from Chichester * Rosemary Jackson from Harbury. Mrs Tricia Collier from Warwick. Mrs Katie Ford from Eastleigh.

James Lynes & Comet from the Isle of Wight L Bridget Holroyd from Long Ashton * Miss Sarah Sheasby from Bromsgrove. Mrs Sue Phillips from Cardiff.

Steven Taylor & Poppy from Fareham LxGR Ian Harrison from Exeter * Philip Maycock from Bromsgrove. Mr Stephen Sims from Hengoed.

Gary Whetlor & Geryl from Wimborne L Joy Easterbrook from Yelverton * Howard Dorrell from Worcester.

Welwyn Garden City

Jacqueline Glynn & Lilla from Brentford GRxL Paul James from Ramsden Heath, Angela James from Billericay * Sarah Kite from Birmingham. Mr Paul Crowe from Kenilworth. Mr Dennis Lloyd from Woodford Green.

Marilyn King & Maurice from Harlow LxGR Carolyn Lantaff from Rayleigh * Elizabeth Evans from Droitwich. Mr Hugh Brown from Coventry. Ms Anne Weist from London.

Andrew Palmer & Mario from Southend L Sarah Faux from Poole * Veronica Bowden from Bewdley. Mrs Shuk Chang from Ilford. Mrs Gillian Herbert from Loughton.

John Sexton & Arthur from Clacton-on-Sea GSD Jean Howgego from Chelmsford * Linda Tindall from Coventry. Mrs Dawn Herbert from Leamington Spa. Mr Daniel Moore from Romford. Mr Antony Shine from Loughton.

Mark Whitton & Jody from Southend-on-Sea LxGR Marika Latham from Utttoxeter * Linda Mallette from Worcester.



Thank you for 60 years of guide dog ownership

I just want to thank the charity Guide Dogs for all the marvellous guide dogs I've had since I turned 18. I'll be 78 in August, so that's 60 years! My guide dogs have helped me have a career as a social worker in the Birmingham area, and they've helped me enjoy my life and my family including my son and daughter, eight grandchildren and two great-grandbabies!

My first guide dog was called Courage, a yellow Labrador named after the brewery, then I had Anna, Jady, Ursula, Vicky, Jangle, Lucas and my current guide dog is Emmie, a little black Labrador. All my guide dogs have been amazing. They've all had different characters, but they've all been beautiful and I couldn't pick a favourite.



I'd also like to thank all the wonderful staff I've known over the decades – from past trainers to Nicola, who trained me with my last two dogs, and all the brilliant aftercare I've had.

With kind regards,
Sheila Wiltshire

Caption competition

Cosmo was three months old when Puppy Raisers Andy and Jackie Gardner took this photo with their Arsenal gnome, named after former right-back Lee Dixon. The couple always take a picture of the many guide dog puppies they've raised with Lee when they first arrive, so they can see how much each pup has grown.



What would you caption this photo?

Send your suggestions to:
Forward, Guide Dogs, Hillfields, Burghfield Common, Reading, RG7 3YG or email forward@guidedogs.org.uk with your name, address and a daytime phone number.

The winner gets a £10 Marks and Spencer voucher.

The last competition winner is Howard Flitter, from Tadley in Hampshire, with the caption "Which one of us will be named 'Chairman'?" Congratulations, Howard!



Competition rules

This competition is open to anyone resident in the UK, except employees of the Guide Dogs for the Blind Association, their families and anyone connected with the competition. No purchase necessary. Proof of posting cannot be accepted as proof of delivery. No responsibility can be accepted for entries delayed, damaged or mislaid or wrongly delivered. Illegible entries will be disqualified. Only one original entry is allowed per envelope. The winners will be notified by either post or telephone and the results will be published in the next issue of the magazine. The winners must agree to the publication of their names, photographs and any publicity, if requested. In all matters concerning the competition the Editor's decision is final. No correspondence can be entered into. Entry implies acceptance of the rules. The closing date for the competition is **31 August 2023**.

Citi has helped us transform the lives of people living with sight loss in London

We'd like to thank Citi for their life-transforming support as we come to the end of three years as their employee-chosen London Charity Partner. During that time, Citi employees smashed their original fundraising target of £350,000 and raised more than £416,000 through numerous challenges, quizzes and activities! This funding is helping more than 178 people with sight loss in London to live a more active and independent life.

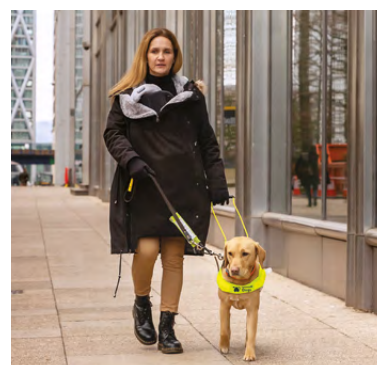
Citi also named and sponsored a guide dog puppy, Theia. Theia was cared for by volunteer

Puppy Raiser and Citi employee, William. Theia has now gone on to qualify as a guide dog partnership with her owner, Lorraine. The funds raised by Citi colleagues will cover Theia's care throughout her lifetime.

James Bardrick, Citi Country Officer, UK and CEO, Citigroup Global Markets Ltd, said, "I'm proud that Citi has worked with Guide Dogs in London, to not only raise vital funds but also to promote awareness around sight loss and further our diversity and inclusion efforts. At Citi, we believe in creating quality and equality of life for everyone."



**LONDON CHARITY
PARTNER**



Players of People's Postcode Lottery support the first stage of our puppies' journey

This year, players are supporting the very beginning of the guide dog puppies' lives – from birth until they are eight weeks old. Funding will go towards all the equipment, costs involved with supporting volunteers and the staffing needed to care for our incredible guide dog mums as they bring their puppies into the world. The puppies are looked after with their mum in our volunteers' homes until they are ready to leave the litter at seven weeks old. They are then taken to our National Centre where funding supports their health checks, assessments, microchips, vaccinations and worming treatments.

Supported by players of



Awarded funds from



Thanks to players of People's Postcode Lottery, our puppies are getting the very best start in life before venturing off to their new puppy raiser families for the next stage of their journey towards becoming life-changing guides.





INCREDIBLE DOGS INCREDIBLE NUTRITION

Royal Canin are enormously proud to be in partnership with Guide Dogs. By working together, we are helping thousands of people with sight loss live the lives they choose whilst also helping to make a better world for pets.