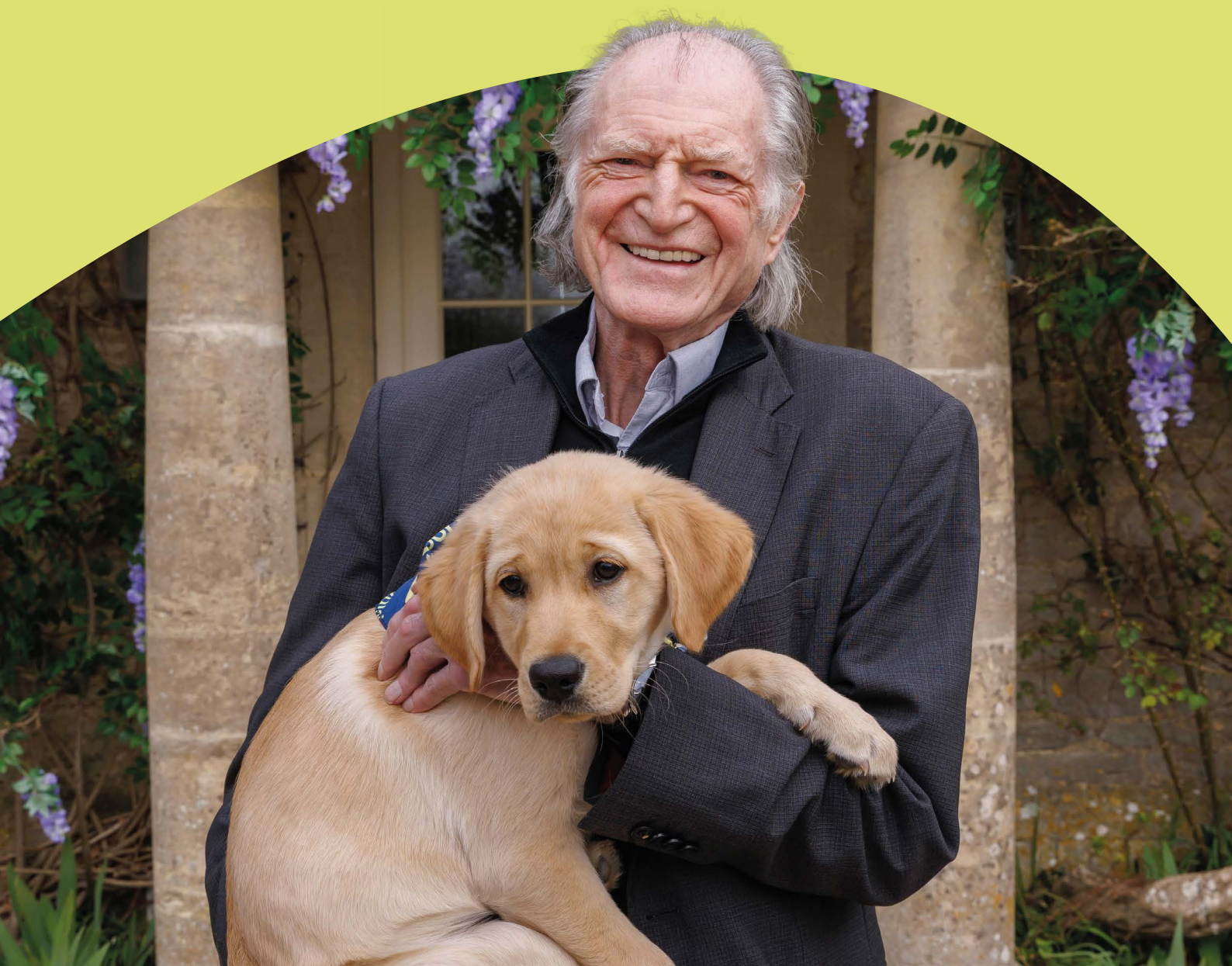


Forward



David Bradley is one in a million!

The star supports our Million Pound House Draw with Omaze

Inside: learn about our
new strategy called
Forward, Together

Our new South East
Regional Centre
opens its doors

How technology can
help people with sight
loss to thrive



Did you know you can help Guide Dogs on eBay?

Make Guide Dogs your favourite
charity on eBay and support us
whenever you shop or sell!

Learn more at charity.ebay.co.uk



Guide Dogs is a working name of The Guide Dogs for the Blind Association. Registered Office: Hillfields, Burghfield Common, Reading, Berkshire RG7 3YG. A company limited by guarantee registered in England and Wales (291646) and a charity registered in England and Wales (209617), Scotland (SC038979) and Isle of Man (1334).

Regulars

5 Welcome from the CEO

6 News ▼
What's been happening in the world of Guide Dogs



10 On the Campaign Trail

11 Guide Dogs in the Media
We've been making the headlines again

12 Star News ►



26 Thank You to our Supporters ►

29 A Day in the Life Of...
James Betts, Video Producer



30 New Partnerships

38 Letter & Caption Competition
Did you meet Paul on his way around the UK in 2006/7?

39 In Good Company

Features

13 Our Friends and Family Sighted Guide Training

14 Introducing Guide Dogs' new strategy – *Forward, Together*

15 Technology and the thriving mindset: enhancing mobility through innovation

16 Welcome to our new South East Regional Centre ►

Photo: Buro Happold



17 Putting Animal Welfare First: Inside Guide Dogs' Animal Welfare & Ethics Panel

18 Volunteering

20 Meet the trainers!

21 Archie's story ►



24 "All because a puppy called Pudding smiled at me" – Audrey's happy happening ▼



25 Brotherly love leads to Steven's very special gift to Guide Dogs



We'd love for you to join our pack

Whether you're an avid runner or looking to take on a new adventure, we have a variety of opportunities for you to get involved and make a difference.

Great North Run – 7 September 2025

Royal Parks Half Marathon – 12 October 2025

London Landmarks Half Marathon – 12 April 2026

TCS London Marathon – 26 April 2026

To join #TeamGuideDogs, check out guidedogs.org.uk/challenge-events

If you're taking on your own sporting challenge, we'd love to hear from you events@guidedogs.org.uk



Subscription enquiries:

You're receiving this copy of Forward magazine as one of our valued supporters. Forward is available in standard print, Braille, large print and audio CD formats. It's also available online as an accessible PDF, as a plain text document and as audio files at guidedogs.org.uk/forward.

If you no longer wish to receive this magazine, or if you wish to change the format in which it's sent to you, please contact us on **0800 953 0113** or via guidedogs@guidedogs.org.uk.

Editorial contributions:

Send your stories to Forward by email to forward@guidedogs.org.uk or addressed to 'Forward magazine' by post to the Head Office address below. Unfortunately, due to the volume of ideas we receive, we cannot acknowledge every item. We reserve the right to edit or refuse.

Founding Editor:

The late Captain Nikolai Liakhoff MBE FRZS

Registered Head Office:

The Guide Dogs for the Blind Association,
Hillfields, Burghfield Common, Reading RG7 3YG.

Switchboard: 0118 983 5555

Guide Line: 0800 781 1444 or
information@guidedogs.org.uk

Supporter Care: 0800 953 0113 or
guidedogs@guidedogs.org.uk

Web: guidedogs.org.uk

© 2025 Registered charity in England and Wales (209617), Scotland (SC038979) and Isle of Man (1334). D001 04/25

Any products or services advertised in Forward by third parties are not in any way endorsed by Guide Dogs, and Guide Dogs shall not be responsible for the accuracy of any information contained in such advertisements nor has it investigated or verified any of the information.

A welcome from Andrew



It is great to be able to welcome you to this edition of Forward magazine, and as you will see from the contents, we have lots of great news and insights into Guide Dogs to share with you. We cover a lot of ground, from our new strategy *Forward, Together*, to an important collaboration with Thomas Pocklington Trust in the News section starting on page six, and also stories from around the regions including our 75th anniversary in Exeter in the South West.

The world seems to be going through quite a tumultuous time at the moment, but the work of Guide Dogs goes from strength to strength. As our guide dog service continues its upwards trajectory towards previous levels, we are also growing the reach and capability of our other support services as we strive to deliver on our aims to help people with sight loss live the life they choose.

Our *Forward, Together* strategy will be key to allowing us to deliver lasting solutions to our communities in the face of a changing world. Our goals and ambitions reflect the core of our charitable purposes but they cannot be delivered sustainably in a short push, so to hold on to our 'North Star', we have set a longer horizon for this plan as you will read about on page 14.

Every month I get to spend time on-class with new guide dog partnerships, time with volunteers seeing the amazing range of things they do, and time supporting staff to make our processes easier and better for the future.

I often join my own local North Wiltshire Fundraising Group at their events. I love seeing the steady stream of folks wanting to say "hi" to the ambassador dogs we have with us, or having really engaging conversations with people – so many of whom have a connection to sight loss. It is always great to spend a couple of hours as 'Andrew the

volunteer' rather than being there on a formal visit as 'Andrew the CEO'.

Having those constant touch points reminds me what an amazing charity we are, and that the results we deliver for the people we serve are truly life-changing. As you read all the stories in this issue, I hope that you too will experience the inspiration that I am fortunate enough to witness every day.

Enjoy our Spring/Summer edition of Forward magazine.

Andrew Lennox
Chief Executive
Guide Dogs



News

Introducing 'Learn with Guide Dogs'

Guide Dogs helps people with sight loss live the life they choose by not only delivering life-changing services but also raising awareness and changing attitudes. Key to this is the work we do with young people: helping the next generation understand the challenges of sight loss and what we can all do to create a more inclusive world.

'Learn with Guide Dogs' is our new collection of resources for schools and youth groups. From puzzles, colouring and comics to session plans for learning about guide dogs, eye health, and access refusals, young people will be guided by our fun Tailblazers Squad characters. Resources for 5-11 year-olds are available at guidedogs.org.uk/learning - stay tuned for resources for early years and secondary-age pupils!



Innovative collaboration with Thomas Pocklington Trust

Guide Dogs works with organisations across the sight loss sector, and on 1 April we started an innovative partnership with Thomas Pocklington Trust (TPT). Guide Dogs' Education Team colleagues are now working as part of TPT's education service, allowing us to provide educational support and guidance to our service users throughout their lives, as part of

our wider services for Children, Young People and Families (CYPF).

Kerry Kernan, Guide Dogs' CYPF Operations Lead, said: "Working like this combines the expertise of both organisations, making the most of both our resources. Ultimately, it will mean we reach more families with a sector-leading service."

Guide dog puppies have a whale of a time at SEALIFE

Guide dog puppies learned how to make a splash in the world thanks to a collaboration with SEALIFE Loch Lomond in Scotland. Pups Honey, Wynn timer, Massey and Robin – along with their volunteer puppy raisers – enjoyed their very own 'school trip' to the attraction, where they learned how to navigate a host of different environments and social settings.

Puppy Development Advisor Erin McArthur said: "We're really grateful to SEALIFE in Loch Lomond for allowing our guide dog puppies to visit. It's so important that the dogs are exposed to a wide variety of situations and environments – that way, they grow into calm and confident guide dogs and learn how to behave in different settings.

"SEALIFE is the perfect location for this, having so many different areas they can explore, all of which offer something unique, and such diverse marine life. Our pups and volunteers had a brilliant day."



Nathan's the star of a deeply moving podcast

An episode of a podcast called Dogs With Jobs features one of our very own Customer Experience Officers, Nathan Foy. The episode is called 'By your side: navigating life over decades with a guide dog, and how the partnership evolves over time' and, as the title suggests, is all about Nathan's experiences with the four guide dogs he has had since the age of 18.

Now a father-of-two, Nathan also shares the profound loss that accompanied the end of each partnership, and the gratitude he feels every time he leaves his house with his current guide dog, Joey.

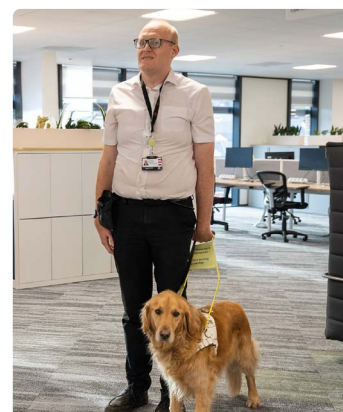
Nathan said: "I want people listening to this podcast to know that the relationships we have with our guide dogs are very much partnerships. They're part of our family."

You can listen to Nathan's episode of Dogs With Jobs wherever podcasts are available.



Transport for Wales staff think Jamie is a very bachgen da!

A guide dog has been given his own staff pass after starting work at Transport for Wales. Golden retriever Jamie clocks in at the Pontypridd office three times a week alongside owner Ryan Moreland, an Assistant Project Manager working in a team delivering safer streets for walking, wheeling and cycling. Ryan plans to bring personal experience as a disabled passenger to his new role. He said: "I'm really excited about being a part of the solution, not just the problem."



When Ryan applied, it was his first job interview with a guide dog by his side. Now Jamie sits behind him with a water bowl and mat, ready to greet colleagues. His staff badge proudly lists his Transport for Wales role – Bachgen Da, Welsh for Good Boy!

Goodbye old friend, but we must press on!

There was a big moment for the Guide Dogs Workshop team in April as they said goodbye to their 30-year-old beam press. The press had stamped out an estimated 28,000 guide dog harnesses over the decades, along with a range of other key equipment.

With the old press failing to deliver its 25 tons of pressure, and broken parts difficult to replace, it was decided a new press (that also meets modern safety standards) was needed. The new press delivers 70 tons of pressure which means the team, based at Guide Dogs' National Centre, can do much more and further streamline their manufacturing processes.

Workshop Manager David Pryke said: "The icing on the cake was the fact that the entire purchase cost of the new press was funded by a generous Guide Dogs supporter."



New leadership programme broadens the horizons

Earlier this year we launched New Horizons, a leadership programme specifically for people with lived experience of sight loss. The programme – developed by Guide Dogs, RNIB and Thomas Pocklington Trust on behalf of the wider Vision Partnership – will provide existing blind and partially sighted managers with the skills and capabilities to progress further as leaders.

The eight- to nine-month pilot programme starts this June with its first cohort of 12 participants. Half the participants have been selected from within Guide Dogs, Thomas Pocklington Trust and RNIB, with the remaining half from other Vision Partnership and Visionary network organisations.

Further updates of the New Horizons programme will feature in future editions of Forward.

Our Futures project in Northern Ireland comes to a close

A programme designed by, and for, young people aged eight to 25 with vision impairments has ended with a celebratory event in Belfast. Our Futures was a five-year partnership between RNIB NI and Guide Dogs NI, funded by the National Lottery Community Fund NI's Empowering Young People's Programme. Set up to support young people to overcome barriers and challenges through transitional periods of their lives, Our Futures surpassed all expectations, helping 275 children and young people who are blind or partially sighted.



Several young people displayed their new-found confidence and independence at the celebration at the Black Box performance and arts venue in April, while project staff shared key successes and discussed next steps to support young people with sight loss to thrive.

International Guide Dog Federation Conference 2025 held in UK

Earlier this month, we were proud to host the International Guide Dog Federation (IGDF) Conference 2025 at Warwick University Conference Centre. The annual event brought experts together from around the world including guide dog schools, trainers and researchers, to collaborate, share best practice and drive innovation.

This year's theme was 'The Power of Partnership' and the conference celebrated the many ways partnership fuels the guide dog movement – from the deep bond between a guide dog and their handler, to the vital collaborations between organisations, volunteers, donors, and communities.

At the heart of this was progressing how the international guide dog community can work together to improve global access to services.

Exeter's 75th anniversary

Guide Dogs marks 75 years in Exeter this year, with plans underway to celebrate the occasion. Our original base in the Devon city was Cleve House, a 17th century manor in 14 acres that was requisitioned as a Women's Land Army hostel during World War II, before Guide Dogs bought it from the Snow family. In March 1998, Cleve House became the first Guide Dogs site to be visited by Her Majesty Queen Elizabeth II.



Glenda Webb started at Cleve House in 1970 as a Kennel Maid, and is now a Dog Welfare Specialist. Glenda said: "We lived on-site in those days, there were six Kennel Maids along with trainers and instructors. There was a housekeeper called Miss Castle, who cooked, cleaned and did everything. They were wonderful days."

Guide Dogs left Cleve House in Summer 2003, moving to Marsh Barton Trading Estate where our Exeter team remains.

Guide Dogs at MARS Badminton Horse Trials 2025 – an unbridled success!

Guide Dogs swapped four paws for four hooves in May as Charity of the Year at the world-famous MARS Badminton Horse Trials. We had two stands in the heart of the event village and spoke to thousands of people, from life-long supporters to those who had never connected with us before.

As well as bringing in substantial funds, we also raised awareness of our cause and our services, talked about gifts in Wills, invited people to put a saddle and bridle on a model of a horse against the clock, and eventing legend William Fox-Pitt even hosted a course walk for us!

A huge thank you to all the staff and volunteers who worked so hard across the event, making the most of this great opportunity.



Guide Dogs Shop

The Guide Dogs Shop merged with our Teemill store at the end of May 2025. While you can no longer make purchases from GuidedogsShop.com, you can now buy an even bigger range of exclusive, sustainable, Guide Dogs-branded clothing, accessories, homeware and stationery from GuidedogsTeemillStore.co.uk.

We've been selling through the Teemill platform, which is owned and operated by Teemill on behalf of Guide Dogs under licence, for a year now, and there's free postage from 4-6 July 2025 to celebrate the bigger range of products available.

Guide Dogs-branded trading merchandise sold by our volunteers is unaffected by this change, and volunteers will still be able to buy their trading merchandise the same way they always have.

On the Campaign Trail



Nearly 28,000 call for an end to problematic pavement parking

The laws in Scotland and London show it is possible to end unsafe and unfair pavement parking; we now need action to allow everyone to walk their streets safely wherever they live in the UK. This was the message we delivered in our pavement parking open letter to party leaders in Westminster, and we're delighted that almost 28,000 people showed their support and signed.

We were joined in our letter hand-in by the MP for Battersea, Marsha de Cordova, who returned to the House of Commons afterwards and gave a powerful speech calling for change. The Government has now committed to publishing a response to the consultation on pavement parking and in April we met Lilian Greenwood MP, Minister for the Future of Roads, to highlight the urgent need for progress.

Designing for inclusion

Last year we published our Design for Inclusion report (read it at [TinyURL.com/GuideDogsDesignForInclusion](https://tinyurl.com/GuideDogsDesignForInclusion)) with University College London. This important research looks at bus stop designs and cycle infrastructure that pose barriers to disabled people and makes recommendations for change. We have already seen progress, with the UK Government committing to introducing guidance on bus stop design in England.

We also welcomed the recommendation from the Government to local councils in England that they pause rolling out shared bus stop boarders. Bus stop boarders involve stepping on and off the bus directly onto the cycle lane. We're pleased the Government has recognised the dangers they pose as a first step, and we will continue to work to shape the final guidance.

The report has also already had an impact across the rest of the UK. A round of Spring political conferences in Scotland, Wales and Northern Ireland gave us the platform to talk about the report's recommendations, followed by sessions at active travel and sight loss parliamentary committees in Holyrood, the Senedd and Stormont. The key message on designing inclusive streets also underpinned our response to the Active Travel Delivery Plan in Northern Ireland.

We are beginning to see the impact of this work. In Wales, the parliamentary lead on transport has set out a direction for inclusive travel which clearly shows the influence of our campaigning. Wherever you are in the UK, our voice calling for inclusive streets is loud and clear.

Guide Dogs in the Media

Guide Dogs helps people with sight loss to feel the magic

Guide Dogs has helped the Warner Bros. Studio Tour London - The Making of Harry Potter to create new tactile tours for visitors with sight loss, as part of our partnership with the world-famous attraction. Guests with vision impairments can touch familiar props and costumes including the wands of central characters Harry, Ron, Hermione and Voldemort, allowing those who are blind or partially sighted to immerse themselves in the world of Harry Potter.

Penny Hefferan and guide dog Questa visited to share feedback on how the tour could be made more accessible. Penny, from Essex, said: "I'd always thought how fantastic it would be to touch some of the displays, and I'm really thrilled to have been able to do so. It exceeded my expectations and really brought everything alive for me."

BBC News covered the new tours, showing Penny being guided around, while BBC Radio Three Counties interviewed her. The Daily Telegraph online and MSN News also created features about the best accessible attractions in London, inspired by and including our partnership with the Warner Bros. Studio Tour London.



Mum really is the word for Connie

When we shared the news that great-grandma guide dog mum Connie was spending Mother's Day with three generations of her family, the story was covered by more than 270 local and national media outlets. Connie shares her Stratford-upon-Avon home with her daughter Sophie, granddaughter Coco and, at the time, Coco's beautiful litter of guide dog puppies.

The story and photos appeared in the Daily Mirror, Daily Star, Daily Express, the Independent, The Times and The Scotsman, and on the Daily Express, Daily Mail, Country Living and Oxford Mail websites. It was also mentioned on Sky News, Capital FM, BBC Newsround, and ITV Central West, plus many regional radio stations.



Andrew 'Freddie' Flintoff bats for Guide Dogs

Streaming channel Disney+ released its documentary about the life and career of world-renowned cricketer and presenter Andrew 'Freddie' Flintoff in April. The show includes shots of guide dog puppy Quiley (pictured), who was raised by Freddie and his family. Speaking about raising Quiley, Freddie said: "When you need a cuddle or something like that, he's always next to me."



Star News

Life-changing prizes for a life-changing cause

Earlier this year, Guide Dogs partnered with Omaze for their Million Pound House Draw. Omaze gives people the chance to win a multi-million-pound house and other life-changing prizes, whilst fundraising for some of Britain's most-loved charities.

By entering the Cotswolds House Draw for Guide Dogs, participants were in with the chance of winning a stunning house in the Cotswolds worth more than £5million. Omaze guarantees a minimum donation of £1million to their charity partner, which in our case helped fund the vital first two months of life for the guide dog puppies born this year.

To raise awareness of our partnership with Omaze, actor and Guide Dogs ambassador David Bradley proudly lent his support. He said: "With one in five people expected to experience significant sight loss in their lifetime, the need for these incredible dogs has never been more urgent.

"Omaze's support to fund guide dog puppies as they begin their journey to transform the lives of people with a vision impairment is so important."

David also toured the Cotswolds house where he met one of the guide dog puppies benefiting from the partnership.

We are deeply grateful to David and Omaze for their support. The draw has now closed, and to find out the total raised for Guide Dogs, visit guidedogs.org.uk/omaze.



Especially for Carole... Jason Donovan meets guide dog Jason!

Here's the moment actor, singer and general '80s icon Jason Donovan met his namesake – Jason Dog-ovan! Carole Morgan and her guide dog Jason enjoyed a warm welcome at the New Theatre in Cardiff for the opening night of the former Neighbours star's tour. He had brought a pen to sign guide dog Jason's harness, and was interested to hear how getting a guide dog had given Carole freedom, independence and confidence.

Carole was delighted when the tour was announced and the star's management team arranged a special meet and greet for her and her guide dog. Carole said: "My Jason loves meeting people, and I always introduce him as Jason Dog-ovan. My grandchildren call him J-Dog, which happens to be Jason Donovan's nickname too, according to his team!"



Our Friends and Family Sighted Guide Training

“A lot smoother and much less stressful,” is how Lauren Bateman describes what it’s like to be guided by relatives who’ve had Guide Dogs’ Friends and Family Sighted Guide Training. Lauren added: “Now, we don’t have to stop to focus on the guiding and can have conversations about other things.”

These training sessions are specifically tailored for friends, family members and colleagues who want to feel more confident guiding an adult they know with a vision impairment. As well as covering practicalities such as getting around obstacles and the correct grip to use, sessions are a chance to meet others with similar experiences and share tips.

After Lauren lost her sight, husband Daniel was the first to be trained. He said: “By the time we went on the training, we’d worked out how to do a lot ourselves, but the training really reinforced what we were doing was right and brought everything together.

“I learned some significant tips that really helped, such as getting through doorways and narrow spaces. It made things much easier and allowed me to support Lauren in a way that lets her be more independent.”

Lauren’s dad, sister, brother-in-law and mother-in-law have all since completed Guide Dogs’ training. “I can now go out with different people while Daniel’s at work,” explained Lauren. “Going shopping and walking down aisles and through smaller, busy spaces is much less daunting.”

The training is also suitable for people who’ve learned sighted guide skills before but want a refresher or to learn more. After three sessions, Daniel was even inspired to become a volunteer sighted guide trainer himself.

He said: “Whether you think you’re good or bad at guiding, the course teaches you how to support someone using techniques that increase their independence. It has a big impact on both parties.”

Lauren added:

“You can ask your questions and queries, get reassurance and practise different tricks and tips in a safe environment. Knowing I’m being guided by someone who’s been properly trained definitely takes away a lot of the stress.



Training sessions are just under two hours long, usually taking place online, in groups of up to eight participants. Face-to-face sessions can also be arranged. The friend or family member with sight loss is also encouraged to attend, but does not have to.

Find out more at [TinyURL.com/SightedGuideTraining](https://www.tinyurl.com/SightedGuideTraining).

Introducing Guide Dogs' new strategy – *Forward, Together*

We have launched an ambitious, long-term plan called *Forward, Together* to guide our work through to the year 2040. As part of this, we're moving away from having a series of five-year, fixed strategies as we have had previously to a more flexible and progressive approach.

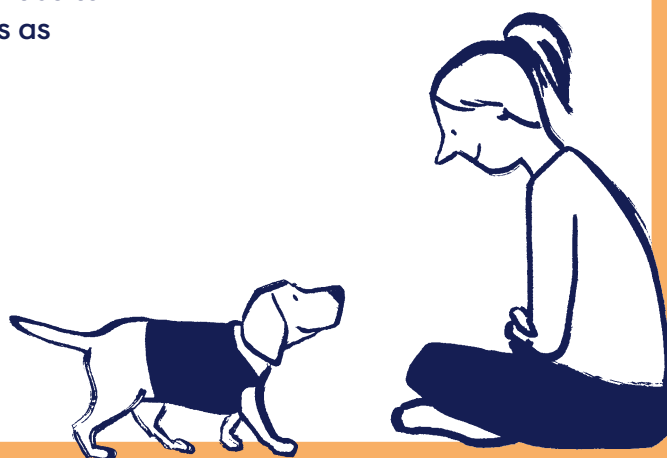
Forward, Together is informed by our own extensive research about the lived experience of people with vision impairments, as well as insight from our sector partners. It remains rooted in our vision to help people with sight loss to live actively, independently and well, but it also recognises that the life each of us wants and expects is constantly evolving.

Andrew Lennox, Guide Dogs' CEO, said: "Society is changing faster than at any time in our 90-year-plus history, and so are we. This is challenging. But it's also exciting. Because the work we do together now will put our charity on the strongest possible footing for the next 90 years.

"I'm so proud of this incredible organisation and all the passionate people who go the extra mile to help us deliver our vital services. *Forward, Together* belongs to all of us – our staff, our volunteers, our supporters and our service users."

To achieve our vision of a world where people with sight loss can truly live the life they choose, we'll focus on strengthening purpose, access and self-belief through the support we provide. To do this, we've identified five strategic priorities:

1. Strengthen our foundations, ensuring our core services are the best they can be.
2. Move beyond just mobility and evolve our expertise to ensure we are offering access to opportunities as well as places.
3. More personalised support around key life moments, stages and transitions.
4. Use tech to enhance dog training and welfare, and become the go-to in tech-driven navigation (see page 15 for more on this).
5. Reframe expectations of what's possible for people who have vision impairments.



To give ourselves the best chance of success, we've divided these priorities across three phases.

To find out more about these phases, and learn more about *Forward, Together*, visit [TinyURL.com/GuideDogsForwardTogether](https://tinyurl.com/GuideDogsForwardTogether). For a copy in large print, Braille or on audio CD, contact our Supporter Experience team on 0800 953 0113.

Technology and the thriving mindset: enhancing mobility through innovation

At Guide Dogs, our goal is to help people with sight loss live the life they choose, and technology can be invaluable to their journey. While nothing will replace the bond between a guide dog and their owner, well-chosen innovations can boost confidence and mobility.

Every day in the UK, around 250 people begin to lose their sight, so our focus on new ideas and technologies remains more important than ever. By combining our specialist orientation and mobility training with cutting-edge solutions and a careful testing process, we aim to offer greater independence, choice and access for anyone who needs it.

In recent months, we've introduced innovations including bone conduction headphones. These use gentle vibrations along the cheekbones to relay sound to the inner ear, allowing users to listen to audio while staying aware of their surroundings - crucial for safe travel.

We also have VoiceVista, a navigation app using Global Positioning System (GPS) data and audio prompts to guide users along their route. Meanwhile, the WeWALK Smart Cane 2 feels like a traditional long cane, but has ultrasonic obstacle detection and connects to a smartphone - providing GPS navigation, voice assistant access and step-by-step guidance. Together, these features make it easier to receive updates and move around with greater ease and confidence.

We're also exploring emerging Artificial Intelligence (AI) mobility devices like Glide



Stuart wearing the NOA device with Dax

- an electronic travel aid that combines cameras, computer vision and robotics - and continuing our collaboration with Biped Robotics. Together, we're developing and testing their NOA wearable mobility device, which sits on a user's shoulders and uses cameras, AI scene descriptions and GPS navigation. By providing real-time information, these technologies open up new possibilities for safe, independent travel, supporting guide dog owners and long cane users alike.

Guide dog owner Stuart said: "My guide dog Dax can't tell me why he has stopped or why he's trying to take me a different route than normal. However, thanks to AI features in wearable devices such as NOA and the Ray-Ban Meta glasses, I have hands-free access to information about my surroundings, helping me navigate with even more confidence and allowing me to make better-informed decisions."

Stuart's story shows how AI and wearable tech can enhance the guide dog partnership - never replace it. As technological advances continue, Guide Dogs will keep exploring and shaping these possibilities, ensuring that new ideas truly enrich the everyday lives of the people we support.

Welcome to our new South East Regional Centre



After more than five years of planning and two years of building work, we're really excited to see our first new building in 15 years in use. Our South East Regional Centre in Redbridge, near London, opened to staff, volunteers and dogs in January.

The centre is our first net-zero building, meaning it produces as much energy annually as it consumes, and the site also incorporates the latest in accessible and inclusive design.

Another priority was accommodating the best welfare standards for our dogs, including those staying overnight during their training, and a total of 75 dogs can be based at the centre.

There are also flexible spaces for Skills, Information and Support Services, Volunteering,

Fundraising and other teams to make use of this world-class hub.

We've also improved the surrounding landscape, adding to the number and diversity of plants and trees across this greenbelt site. It's a great way to boost the wellbeing of our staff, volunteers and dogs, and it ensures we give something back to the local community.

The project was funded almost entirely by the sale of our old training school, which was known as Findlay House and located next door. The rest came from generous donations to our Capital Appeal, and we have recognised some donors by naming rooms and spaces around the new centre after them.



Guide Dog Trainer Supervisor Roz Wakelin has been based at our Redbridge site for 21 years, part of the centre's 15 (and growing) Guide Dog Trainer team. Roz said: "We have so much more inside space to train dogs now, plus a large covered outside area when it's raining. The new office space is custom-built to include dogs, rather than before when we just squeezed them in as best we could. My favourite thing is the lovely roof terrace we can use for our breaks – when it's not raining, of course!"

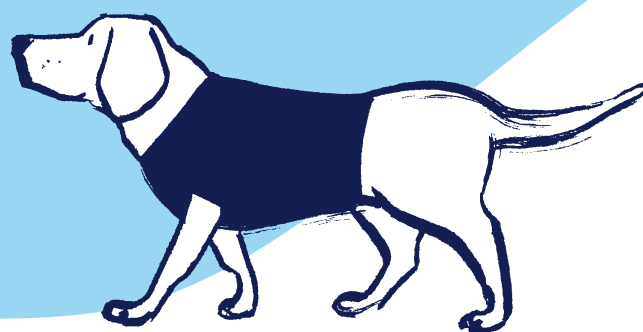


Lucy Bailey is one of three Dog Welfare Technician Team Leaders, having worked for Guide Dogs for four years. Highlighting her favourite features at the new centre, Lucy said: "The new vet room is excellent for our weekly vet visits. The drop-off runs at the side of the new building work really well for the volunteer fosterers, and we can open them up to make it one big run when it's playtime for the dogs."

Putting Animal Welfare First: Inside Guide Dogs' Animal Welfare & Ethics Panel

At the heart of Guide Dogs' mission is a deep commitment to the wellbeing of the special dogs who make our work possible. The Animal Welfare & Ethics Panel plays a vital role in ensuring that we uphold our responsibilities through independent, expert and ethical oversight.

The panel brings together respected professionals in fields such as veterinary science, animal behaviour, welfare and ethics, who advise Guide Dogs on our dogs' health, welfare and wellbeing at every stage of their lives.



The panel comprises:

- **Tim Stafford, BSc (Hons), MA** who chairs the panel and brings four decades of professional experience with Guide Dogs. Now Principal Officer for Canine Affairs, Tim advocates strongly for evidence-based practices and the development of robust industry standards.
- **Dr Helen Zulch** is a veterinarian and recognised specialist in Veterinary Behavioural Medicine. Helen is Associate Professor at the University of Lincoln, where she teaches on the MSc in Clinical Animal Behaviour.
- **Denise Laughlin RVN, MSc** is a veterinary nurse who worked nationally and internationally in animal welfare and conservation before joining Guide Dogs, where she leads the national Dog Welfare Operations team.
- **Flo Hillen B.SocSci, BVMedSci, BVMBVS, PGCHE, FHEA, MRCVS** is a veterinarian working as the clinical assistant professor at the University of Nottingham and is involved in research, teaching, and ethical review within veterinary education and practice.
- **Colonel Mark Morrison VetMB, MA, MSc, MRCVS** is a veterinarian who serves as Chief Veterinary and Remount Officer for the Armed Forces. Mark is responsible for setting and assuring veterinary and remount policy, clinical standards and training of both Service personnel and animals.
- **Dr Hannah Wright has a PhD** in dog behaviour and a strong background in both research and charity operations. Hannah is Guide Dog Programme Lead at Guide Dogs and brings a science-led but practical perspective to training and service delivery.

From shaping policy to supporting investigations, the panel's work helps to maintain the highest standards and ensures that our approach evolves with the latest knowledge and ethical thinking.

Importantly, it also protects the reputation of Guide Dogs, reinforcing public trust in our values and mission. With an annual report to the Audit and Risk Committee, the panel's oversight is as rigorous as it is essential.

Claire keeps volunteering for Guide Dogs in the family

Like many children, Claire Kirby used to clamour for a pet dog, begging for a puppy every birthday and Christmas. And like many parents, Claire's mum Susan said no – until she became a volunteer puppy raiser (or puppy walker, as the role was known then) for Guide Dogs when Claire was 13.

The family took on Volley, a black Labrador, who was destined to become a guide dog dad and a permanent member of the family. But Volley's legacy didn't end there – he inspired Claire to not only eventually become a puppy raiser herself, but to embark upon a career with Guide Dogs.

Claire's now a Technical Learning Specialist in Shrewsbury, alongside being a puppy raiser and training dog fosterer. But even guide dog trainers aren't immune to the occasional mishap with a spirited puppy. Claire said: "I

once took a puppy on holiday to Weymouth and after a run and a swim, she was lying under my mum's beach chair in the shade.

"The next thing I knew, mum was on her back, still in the chair – the puppy had been very quietly digging in the sand behind the chair and my poor mum (and her chair) fell in the hole!" Fortunately, having raised seven guide dog puppies herself since Volley joined the family, Susan saw the funny side.

The family history of volunteering has given Claire a greater insight into what her fellow puppy raisers experience. She has attended puppy classes with her own pups and got to know local puppy raisers and their dogs, and sometimes her pup's classmates have come to her for their next stage of training.

She said:



“Mum's Puppy Development Advisors were always so understanding and supportive. And I know what the puppy raisers are going through, I empathise with them saying goodbye and I know how hard they work.

The biggest worry is giving the dog up at the end but you get so many updates, and you change someone's life. And it's fun! You have a laugh. It can be stressful but you can get through it with the support of the staff and you feel really proud at the end.

”

We are currently recruiting for volunteers to raise our puppies and to look after our guide dog mums; to find out more about volunteering with our dogs, please visit TinyURL.com/VolunteerWithOurDogs.

In memory of puppy raiser Madge Nightingale

We are very sad to share the news that long-standing puppy raiser Madge Nightingale has died. One of our most dedicated volunteers, Madge began puppy raising for Guide Dogs in 1981 after hearing a radio appeal for puppy raisers living in built-up areas. She was proud to be a puppy raiser, and even prouder of every life-changing puppy she raised; so much so, Madge and husband David kept photos of all 49 guide dog puppies they raised in the hall of their Birmingham home.

Madge was an inspiration to many and alongside her puppy raising, she would promote the charity as a volunteer speaker and in the media. Andrew Lennox, Guide Dogs CEO, said: "Madge was a tremendous all-round supporter of Guide Dogs, but she shone brightest in her role as volunteer puppy raiser."

“

She was a much-loved and respected member of Guide Dogs whose contribution was truly astounding. I know that she will be sorely missed by many staff and volunteers, but we take comfort in her life which was filled with love, kindness and purpose.

”



Madge's puppy raising legacy is impressive: 31 of her puppies qualified as guide dogs, one became a buddy dog providing support and companionship to a vision-impaired child, and one entered our breeding programme as a guide dog dad, fathering future life-changers.

Nichola Lee, Puppy Development Advisor, said: "I had the privilege of being Madge's Puppy Development Advisor for a couple of years. During this time, Madge was very much at the heart of our Birmingham volunteering community. As a determined and passionate individual, she supported her fellow volunteers through meetups and puppy classes - wanting every puppy raiser and guide dog puppy to be a success. She did everything with a smile and was an inspiration to everyone. We will miss her."

We pay our respects to Madge as a puppy raiser and friend who gave so much to Guide Dogs and to people with sight loss: her last two puppies, Hope and Quizzie, qualified as guide dogs in 2023.

As an organisation, we cannot put into words the dedication and support Madge has given us over the years. She was a rare and shining light that we won't forget. Our thoughts are with her family and friends.

Meet the trainers!

If you tell someone you work for Guide Dogs, their first question will usually be “Are you a trainer?”, and we do have lots of trainers in the organisation – in more roles than you might expect.

There are our Guide Dog Trainers (GDTs) of course, but also Guide Dog Mobility Specialists (GDMSs), Vision Rehabilitation Specialists (VRSs), and Habilitation Specialists. We also have Sighted Guide Trainers, Puppy Development Advisors, Breeding Dog Advisors; the list goes on.

With so many staff sharing their expertise with thousands of people every year, how do we ensure that the help we’re giving is the best it can be? The answer’s a mixture of initial support and teaching, and ongoing training in the form of Continuous Professional Development (CPD). This year we’ve seen colleagues across Guide Dogs pass, qualify and graduate from their respective courses with flying colours.

Our Guide Dogs Academy launched in 2022 to recruit, train and retain our technical staff (those working directly with our dogs). Hannah Webb-Martin was in our first cohort, and she’s just graduated having matched her final partnerships as an Academy learner. Hannah said: “I couldn’t have asked for a better class as my last one before becoming a fully-fledged GDMS.”

Hannah’s in good company – GDTs Ciaran, Ellie and Charlotte celebrated their graduation at our South East Regional Centre recently, and four more GDTs and seven more GDMSs are set to qualify in the next few months! They will join local teams across the UK to train and match more guide dog partnerships.

Top photo: Hannah Webb-Martin

Lower photo: Ciaran,
Technical Learning Specialist
Emma, Ellie and Charlotte



We’re also focused on maintaining and building on skills as people move through their career – Simon Cope is our Adult Services Operations Lead. He said: “We have a large group of colleagues undertaking their Level Three Award in Education and Training course, ensuring their skills are up-to-date. By training the trainers everyone gets the best support, because that learning benefits the staff themselves, then those who learn from them, and then the people they go on to assist.”

And there’s more! Our VRSs build living and orientation skills in those waiting for a guide dog, so they are ready to train. When Forward went to press, our latest cohort were due to graduate in July from their two-year FdSc Rehabilitation Work – Visual Impairment course at Birmingham City University.

For more information about a career at Guide Dogs, visit guidedogs.org.uk/about-us/careers.

Archie's story

Sport-mad Archie dreams of getting to the Paralympic Games. Described by his parents as “fiercely competitive”, Archie currently holds a host of British men’s swimming records at the age of just 17. He narrowly missed out on a place at last year’s Paralympics in Paris. By continuing to work hard, in and out of the pool, and with support from Guide Dogs to build his independence, Archie wants to represent his country at the highest possible level of his sport in 2028.



"I just really enjoy playing all sports and testing myself," said Archie. "I compete in Jujitsu, which I really enjoy because I spar with everyone, not just people with a vision impairment. I also play cricket which is specially adapted for people with sight loss. It's really nice to be in a team and messing about with friends. I also do surfing and swimming which I really enjoy, and I'm good at."

The teenager is being characteristically modest when he says he's good at swimming – he broke his first British men's record at the age of 14, and currently holds five British men's records in the S11 category: two short course records for 50m breaststroke and 100m breaststroke, and three long course records for 50m breaststroke, 50m backstroke and 100m breaststroke. When he broke the long course 100m breaststroke record in July last year, it had previously stood for 24 years.

Archie said: "I started training more and more, and I really wanted to test myself so I began entering swimming competitions. After I swam in my first one, I really enjoyed it – the environment was really fun – so I started doing more. And then putting in more hours in training, working harder in the pool and gym. It's all grown from there."

Archie's dad Charlie describes his oldest son as "a fish". Charlie said: "From the first moment of seeing Archie in the water, we realised he was incredibly good at swimming. And then that fed

into his competitive nature and his tenacity to succeed. I know the hard work Archie has put into his swimming and to see him get the results he has makes us feel really proud."

Last year, Archie was invited to Paris for trials for the Paralympic Games. While he didn't make the team, he has earned a place on the Paralympic Inspiration Programme. "It was an honour to be invited," said Archie, "and I did pretty well too – I actually got a personal best, so I was pleased with that. I was also in the call room with Adam Peaty, which was really cool. I look up to him because he is a breaststroker and that's the stroke I like swimming best. Also, I admire how he prepares for races – so to swim straight after him was pretty surreal.

“I want to get to the highest level possible with my swimming. I'm hoping to get my international classification soon and then I can compete internationally, and maybe then in the Commonwealth Games next year, and then the Paralympics in three years.

”



Archie's sight loss

Charlie said: "When Archie was a baby, everything was pretty normal. Then around 18-months-old, we noticed his eyes started wobbling. At first it was at night, or if he was tired, but then he started doing it more and more, so we were advised to go to an eye specialist. At 20-months-old he was diagnosed with having severe retinal dystrophy.

"It was really hard because we didn't have any guarantees of anything. We knew it was degenerative. We knew it was severe. But we didn't know if Archie was going to lose his sight. Nobody could give us any clue about what would happen in the future."

Retinal dystrophy is a genetic condition which affects the cells in the retina at the back of the eyes, and over time stops them from working. Archie's younger brother Hugo has the same condition.

Charlie continued: "Today Archie is officially registered as being severely sight impaired. He



is amongst a small group of people who have no light perception or cannot see light. But that didn't happen straight away, he lost his sight in stages so first his peripheral vision went, then his night vision, and eventually his central vision when he was around seven years old.

"We found the best way we could support Archie was to not let his sight loss be a constraint for anything he wants to do. Archie has always been fiercely tenacious. He stops at nothing to win, but in a very sportsman-like way."

Support from Guide Dogs

Archie has received support from Guide Dogs funded by his local authority, North Yorkshire County Council. Senior Habilitation Specialist Andrew Lambert worked with Archie on his mobility and long cane skills last summer, as Archie was preparing to change schools for his A-levels.

Charlie said: "At 17, like all young people, he is going through that change from being a child where your parents do everything for you, to being independent and wanting to meet your friends in town or go out on your own."

Charlie says he's noticed a big difference since Guide Dogs began supporting Archie. "He is so much more independent around the house in making his food, getting his own clothes. We have definitely seen that connection for Archie that Guide Dogs really do 'get it' and as parents, that's what you want. You want to know there are specialists there who can support your children."

Archie added: "My aim is to be as independent as possible. I would love a guide dog in the

future. I just love dogs, I think they're amazing, and having a guide dog would just be a massive help and would mean I can do more on my own."

Charlie concluded: "In a visually impaired world, confidence and independence is what we as parents hope Archie will gain from Guide Dogs' support. Knowing that there is someone to ask, and someone who can take him wherever he wants to go in the future, feels like a weight has been lifted off our shoulders. To have experts who can answer his questions and support him is invaluable."



“All because a puppy called Pudding smiled at me”

Audrey's happy happening

Dear Sir/Madam,

I hope my happy happening will interest you.

It really began at Christmas 2021 as I was looking through envelopes of appeals, I saw three puppies wanting sponsors. Pudding drew my attention with her appealing eyes. I used to support Guide Dogs with a cheque but this time, I wanted to be more involved.

At 90-years-old and with my soft toy puppy, it was good to get Pudding's progress reports and know how keen she was in training until she was ready for responsibility as someone's eyes. Pudding bonded well with her new owner Jane, and the photo of them together was thanks enough.

Then came a wonderful surprise - my happy happening. Talking to my friends, Jen and Doug, at our local coffee morning, Jen said her blind friend Jane, along with her husband and her new guide dog Pudding, had spent a day with them while on holiday.

I had understood that sponsors had no further contact when 'their' dog started working as a guide dog, but now I had the opportunity to meet both when Jen and Doug invited me to their home in July 2024. I spent a very happy hour stroking and talking to Pudding as she sat beside me.

I wonder how many sponsors have been so lucky. My new friendship is a privilege, of course. When Jane and Pudding featured in the 2024 appeal, I did as asked and now sponsor Custard, and eagerly await her Pupdates. All because a puppy called Pudding smiled at me.

Yours sincerely,
Audrey Armitage
Devon

To find out more about sponsoring a guide dog puppy like Audrey has, visit guidedogs.org.uk/puppy or call our friendly Supporter Experience team on freephone **0800 953 0113**.



Jane and her guide dog Pudding, as they appeared in their sponsors' last Pupdate.

Brotherly love leads to Steven's very special gift to Guide Dogs

Gifts in Wills are vital to Guide Dogs, as nearly two out of three guide dogs are funded in this special way. After Steven Thomas's vision-impaired brother died, Steven was determined to celebrate Stuart's life by leaving a gift to Guide Dogs.

The brothers were born in Macclesfield, Cheshire, and as teenagers in the 1960s, they moved to Manchester where they shared flats together and started a successful engraving and key cutting business.

Steven was a talented musician and singer, joining a popular band called The Taveners in the 1960s and '70s as a saxophonist, playing venues across Manchester and Liverpool. In fact, Steven was still playing in a (different) band right up until he was sadly too ill to travel and play. Stuart was also a music lover, playing the accordion all over Europe.

Steven was a keen sportsman; he formed a cricket team called The Rodneys, he was an avid angler and he loved golf, even spending time in his younger years as a caddie on the European tour. It was at his local golf club that Steven met Peter and Marilyn Selwyn, who became firm friends for the next five decades.

After Steven died in January 2023 Marilyn, as the executor of his Will, arranged for a cheque for his very kind legacy of £100,000 in Stuart's



Steven Thomas

memory to be presented to Guide Dogs at one of their favourite golf clubs, Clwb Golff Pwllheli (Pwllheli Golf Club).

Steven also left gifts in his Will to the hospice in which his long-term partner, Sharon, passed away after a long battle with cancer, to his friends, and to the beloved golf clubs he had played at throughout his life.

Marilyn said: "Steven was a lovely and very artistic man of many talents. Peter and I miss him very much, as do all his friends."



We're so grateful and proud to receive every gift left in every Will, whatever the size. Each one helps change the lives of people with sight loss. To find out more about leaving a gift in your Will to Guide Dogs, visit [guidedogs.org.uk/giftsinwills](https://www.guidedogs.org.uk/giftsinwills).

Dear supporters,

It's hard to believe that I have been at Guide Dogs for a whole year now. I have loved learning about how our services make such a difference to the lives of people of all ages who have sight loss.

But of course, we couldn't do our life-changing work without everyone who donates or fundraises for us. People like the incredible Bob Colclough, whose cycling challenges are epic in their scale. Or brave Dave and Margaret Burke, who plunged themselves into icy water for Guide Dogs and who are planning to do it again!

I hope you're all enjoying some summer sunshine,

Terry McGrath

Chief Marketing & Fundraising Officer



► Two- and four-legged volunteers from the Coventry Fundraising Group held a collection before Coventry City Football Club's game against Preston North End, raising £2,237. Charles Bloch, former guide dog owner and deputy group co-ordinator, said: "We'd like to say a massive thank you to everyone at Coventry City Football Club for supporting us with this collection. Our volunteers and dogs had a fantastic time meeting football fans before the match and were overwhelmed by their generosity."



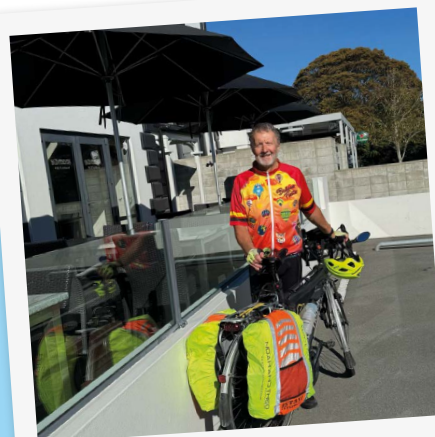
Coventry Fundraising Group



Antonio, Christine and Herbie

◄ As if taking on the Belfast City Marathon in May for Guide Dogs wasn't enough of a challenge, Antonio McKenzie decided to make things more interesting by wearing the weight of a fully grown guide dog along the 26.2-mile course! Antonio, from Carrickfergus, said: "My mother-in-law Christine received her guide dog Herbie last year and the positive impact he's had on her life motivated me to add an additional 40kg, via a weighted vest." Antonio had plenty of support along the course from family and friends, and raised £3,350.

► After appearing in the last edition of Forward for cycling solo down the Atlantic coast of America to raise money for Guide Dogs, Bob Colclough has been at it again. This time Bob, from Leigh in Staffordshire, rode an anti-clockwise loop of New Zealand's South Island, starting and finishing in Christchurch. Bob completed the 1,333-mile challenge, with 64,000 feet of elevation, in just 22 days. Raising £3,065, this epic trip was in memory of the two retired guide dogs that Bob and wife Karen rehomed, named Hattie and Grace. Bob is also a volunteer driver and fundraiser.



Bob

► Members of the Poppy Lounge in Swansea have raised more than £2,500 to name a puppy in tribute to a much-missed guide dog owner. Trevor Skinner and yellow labrador retriever Ash were staunch fundraisers for Guide Dogs and made many friends at the community group, which meets on Monday mornings. When Trevor died, members arranged a series of events in his memory to reach their fundraising goal in just three months. Puppy raising volunteer Lynne Richards visited the Lounge to thank the members and said: "They were over the moon at their achievement."



Lynne at the Poppy Lounge



Andrew

◀ Andrew Harper-Walker was inspired to take on the Great North Run for Guide Dogs by a regular customer and their guide dog at his deli/café, The Patisserie Malton in North Yorkshire. When he didn't quite reach his fundraising target his friend Gilly Robinson, owner of The Cook's Place event space in the town, teamed up with him to host a supper club. A fun evening had 11 diners learning how to make a dish while blindfolded, and then enjoying their hard work. With all proceeds going to Guide Dogs, Andrew and Gilly were able to donate a total of £2,000.

► Dave and Margaret Burke, volunteer fundraisers and puppy raisers from Fife, did a Polar Plunge in Antarctica while on holiday and raised £570 for Guide Dogs. Margaret said: "Over the past ten years, since we became puppy raisers, we have come to understand how having a guide dog gives independence to those with a vision impairment. We recognise that these wonderful dogs cost a lot to train and we wanted to play our part." The pair are now planning another icy plunge for Guide Dogs in the Arctic Ocean off Svalbard, Norway, in August 2025.



Dave and Margaret



John with the group

◀ The Chard, Crewkerne and Ilminster Fundraising Group in Somerset held a collection at Westlands Entertainment Venue in Yeovil, having been invited to the theatre by author and Guide Dogs supporter John Nichol. John was performing his one-man show and book tour, The Unknown Warrior, and at the end, and having been a fosterer himself, he invited Guide Dogs volunteers on stage while he spoke about the charity. Afterwards, the group collected £274.10 as John signed books and posters for fans in the foyer.

► Volunteer Kyle Gentry was among 2,500 people who braved the waves at the New Year's Day Swim in Saundersfoot, Pembrokeshire. He was cheered on by wife Stephanie, who said: "It was a chilly day, but the rain and wind held off, so we will count that as a win. The kids enjoyed cheering Kyle on, especially knowing it was for such a great cause." Kyle raised £648, which was topped up to £1,200 by the Swim Committee. What a great start to the Pembrokeshire group's 50th anniversary year!



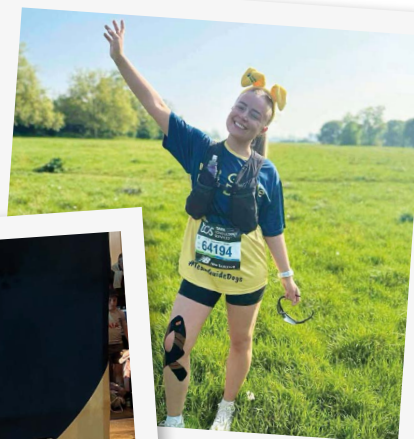
Kyle and kids



Norwich Fundraising Group

◀ Norwich Fundraising Group joined thousands of people up and down the UK in April for Guide Dogs' annual Make Every Cuppa Count event. The tea party was opened by Norwich Town Crier Bob Lloyd at the city's Honesty Library, raising £180.27. Annette Smart, Group Coordinator, said: "It was fantastic taking part in our annual Make Every Cuppa Count fundraiser, and to be joined by the Norwich Town Crier to open our event. As a guide dog owner myself, I know just what an amazing difference a guide dog can make to someone with sight loss."

► Natalie Dixon ran the London Marathon for Guide Dogs, having grown up with the charity. Nat was a casual kennels worker at our former Tollgate site in Leamington Spa aged 17, and her mum is Janine Dixon, who's Breeding Operations & Welfare Lead at our National Centre. Nat crossed the finish line with Katharina Hutchings, Guide Dogs' Volunteer Communications and Relationship Specialist who was also running for the charity. Katharina spotted that Nat was struggling a little near the end of the race, and kindly offered to run the last mile with her. Nat raised £2,125, and Katharina raised £2,121.



Natalie



Katharina



Gemma and Ian

◀ When Gemma Fairhurst had a heart attack 10 years ago, aged 29, she was told she needed to change her life. She took up puppy raising and was given Ian, a seven-week-old yellow Labrador/golden retriever cross who did just that. Ian was later partnered with a guide dog owner called Mark, who planned with Gemma for Ian to return to her in retirement. Sadly, Ian died a year away from hanging up his harness. In February, Gemma took Ian on one last fundraising walk for Guide Dogs in Blackpool before he was put to sleep, raising £8,579 to name another guide dog puppy Ian.

A Day in the Life Of... **James Betts,** **Video Producer**



“

With so much activity going on every day at Guide Dogs, we want to share what's happening – and that's where the role of a Video Producer comes in. When I joined I thought I'd be working with dogs, and in my four years here I have made films about puppies, dogs in training, working partnerships and rehomed dogs.

“However, alongside that it's been about people – the staff, volunteers and service users who work with the dogs, but also those behind our other services, from CustomEyes books to Family Services, to Vision Rehabilitation Services.

“My time is divided into three main areas – planning our shoots, actually capturing the footage, and editing and producing the films. On a non-filming day I'll be in the office working on the preparation for a shoot, or in the editing suite, looking at the footage and shaping the final film.

“The process starts weeks before the filming date with briefs, storyboards, call sheets and schedules, so we arrive knowing exactly what we need to film and how it will be used.

“On a filming day, we could be at a Guide Dogs site, but we've also filmed all over the country, in a range of locations – we even did a film last year at the Eden Project in Cornwall. The people involved in a shoot can range from just me to a whole crew of video producers, specialists from our Digital and Social teams,

and colleagues to help direct the day and help our interviews run smoothly.

“Filming days are usually fairly intense and can be long, but it's a real privilege to meet the service users, staff and volunteers, and hear their stories. Once we've finished and packed the kit away I usually drive home running through the footage in my head and starting to plan things out!

“Our films are used in a variety of ways across our media channels. For example, the Eden Project film was all about our Family Services, and sits on our website to provide an introduction to that area.

“In the past I've also assisted with 'Pupdates', which are an integral part of our Sponsor a Puppy scheme which connects sponsors with the progress their pups are making.

“And we make lots of short-form films for our social channels, as well as filming for messages to staff and volunteers. For me, nothing gets the message across as well as creating the best film I can.”

You can watch the video James made about a Family Event at the Eden Project by visiting tinyurl.com/EdenProjectGuideDogs.

Congratulations to our new partnerships

New partnerships are listed by community team. Each listing details owner, guide dog, town, breed, Puppy Raiser, Breeding Dog Holder and Fosterer. Please note that only those who've given permission are included.

You'll see abbreviations showing each dog's breed: **L** for Labrador, **GR** for Golden Retriever, **GSD** for German Shepherd Dog, and **STP** for Standard Poodle. An "x" between letters (like **GRxL**) means a cross of those breeds. An asterisk (*) is simply used to separate volunteer roles. Some names may be missing if a volunteer chose not to be listed.

Warm congratulations to all our new qualifiers, and heartfelt thanks to every person who made these partnerships possible.



Academy Team Midlands & East

Alan Barnes & Windsor
L Vhairi Bollands from
Nottingham * Mrs Sally
Ashley from Warwick.
Mrs Marie Edenbrow
from Nottingham.

Brian Harrison & Konrad
GRxGSD Shaun Morris
from Worcester * Mrs
Sarah Byrne from Banbury.
Mrs Michelle Gerrard
from Nottingham.

Linda Jameson & Opal
GRxL Jackie Benskin
from Loughborough *
Caroline Windrum from
Southam. Mrs Sarah
Byrne from Banbury. Ms
Rebecca Adamson from
Sutton-in-Ashfield. Craig
Hulatt from Nottingham.

Ivy Mellor & Misty GR Helen
Trickett from Droitwich *
Mr Richard McCaughan
from Leamington Spa.

Timothy Reddish & Upton
STPxL Fiona Dalrymple
from Stratford-upon-
Avon * Kat Bray from
Swadlincote. Mrs Linda
Landsberg from Milton
Keynes. Mrs Janet
Evans from Warwick.

Academy Team North East

Jules Armitage & Taya
L Karen Nicholson from
Beverley * Alaine Powell
from Birmingham.

Stephen Cook & Satin
GRxGSD Margaret
Kenworthy from Holmfirth
* Lorna Morgan from
Birmingham. Mr Paul
Black from Solihull.
Miss Madelaine Munro
from Rotherham.

Andrew Egan & Peter L Sue
Fletcher from Sheffield
* Susan Robinson from
Worcester. Miss Katherine
Gunn from Leamington Spa.
Mrs Judith Ball from Leeds.

Richard Lythe & Tiger GRxL
Harriet Cranswick from

York * Margaret Reynolds
from Rugby. Mrs Sally
Sleath from Warwick. Mr
Andrew Hall from Sheffield.

Academy Team North West

Craig Bates & Leni
LxGR Philip Massey
from Burnley * Sandra
Boden from Rugeley.

John Moore & Phil LxGR
Xara Rathore from
Knutsford * Sandra Boden
from Rugeley. Mrs Louise
Blackhurst from Bolton.

Academy Team Scotland & NI

Jacqui Cordiner & Susan
L Robert Kirk from Irvine
* Mrs Denise Henry
from Ayr. Mrs Lauryn
Craig from Hamilton.

Diane Manweiler & Saphie
L Jake Morhulec from
Lochgelly, Patrick Willis
from Arbroath * Diane
Fowkes from Nuneaton.
Mr Alastair Robson from
Dunfermline. Mrs Sally
Campbell from Forfar.

Dianna Simpson & Gail
LxGR Catherine Johnston
from Boness, Sam Fleming
from Bathgate * Michael
Jones from Leicester.
Miss Katherine Gunn from
Leamington Spa. Miss Lyn
Archer from Forfar.

Academy Team South East

Laura Ivey Hansen & Luker
GRxL Peta Almond from
Maidenhead * Lisa Bird
from Stratford-upon-
Avon. Mr Paul Black from
Solihull. Sharon Bromley
from Welwyn. Mrs Sharon
Pridmore from Billericay.
Mr Ravindran Krishna
from Woodford Green.

Michael Leader & Thimble
LxGR Shreeti Palan from
Leicester * Pamela Nash
from Northampton.

Alexander Ramzan & Rosie
LxGR Jackey McLoughlin

from Hunstanton * Louise
Maw from Bicester. Miss
Katherine Gunn from
Leamington Spa. Mr
James McGreevy from
Leamington Spa. Mr James
Anderson from Loughton.

Academy Team South West & Wales

Lloyd (Jonathan)
Davies & Oswy GRxGSD
Geoffrey Chappell from
Seaton * Sarah Lay
from Solihull. Miss Julie
Thomas from Bridgend.

Melissa Driver & Justine
GRxL Ian Harrison
from Exeter * Mrs Elaine
Crothers from Cardiff.

Rhodri Owen Griffiths-
Price & Bronte GRxGR
Steve Greenham from
Dartmouth * Donna
Kennedy from Woodstock.
Ms Katharine Edwards
from Cardiff.

Lenny Jordan & Wilf
GRxGSD Suzanna Kierk
from Bristol * Sarah Lay
from Solihull. Mr Ian
Champness from Newport.

Christopher Williams &
Gerald GRxGR Anne Cole
from Swindon * Louise
Collins from Nuneaton.
Mrs Sarah Byrne from
Banbury. Mr Jake
Buckley from Cardiff.

Belfast

Colin Boyd & Finley LxGR
Barbara McClune from
Newtownabbey * Lynne
De Melo from Stoughton.
Mr Richard Hambleton
from Carrickfergus.

Niall Crozier & Elva
L Janice Gray from
Dundee * Karen Rankin
from Leamington Spa.
Miss Rachel Ashley
from Nuneaton. Mr Ian
Scott from Kirriemuir.

Avril Fairbrother & Jack
GRxL John Monagle from
Irvine * Lisa Castle from
Redditch. Mrs Sarah Byrne
from Banbury. Miss Susan
Deuchars from Dundee.

Christine Glendinning &
Herbert GRxGR Thelma
Brown from Hexham * John
Hamilton from Solihull. Miss
Naomi Clay from Forfar.

Siobhan Loughran &
Santi L Sam Scobbie from
Bonnybridge * Susan
Robinson from Worcester.
Miss Katherine Gunn from
Leamington Spa. Mrs Linda
Anderson from Forfar.

Sonia Maguire & Pat
GRxL Karen Griffiths from
Edinburgh, Brian Moffat
from Falkirk * Ms Leela
Cubillo from Lichfield.
Mrs Jane Connelly from
Forfar. Miss Beverley
Johnston from Bangor.

Diane Marks & Biscuit
GRxL Peter Lockhart
from Bangor * Carol Miles
from Hinckley. Mrs Kaye
Donaldson from Kirriemuir.

Rose Short & Nana GRxGR
Gil Gray from Tranent,
Margaret Morrison from
North Berwick * Tracy
Inman from Coventry. Mrs
Linda Price from Dundee.

Alan Stevenson & Felicity
L Linda Connor from
Blairgowrie * Miss Jessica
Lowe from Birmingham.
Mrs Claire McDiarmid
from Forfar. Miss Victoria
Gonzalez from Aylesbury.

Birmingham

Valerie Brown & Badger
L Mary Shannahan
from Nuneaton * Mr
Darren Wright from
Leamington Spa.

Ruth Carr & Rosie LxGR
Susan Cooper from
Chesterfield * Mrs Tricia
Collier from Warwick.

Valerie Daniel & Cassie
GRxGR Debbie Hughes
from Oakham * Katie
Harris from Redditch.
Mr Aymer Hutton from
Leamington Spa.

Tony Hodgson & Stephen
LxGR Lesley Barrett
from Bewdley * Pamela
Nash from Northampton.
Mr Adam Cooling
from Kenilworth.



Pamela Hughes & Bella GRxGSD Carole Prior from Rugby * Sarah Lay from Solihull. Mrs Nikki Edmunds from Warwick.

Stephen Keith & Rowley GSD Valerie Barto from Nottingham * Trudy Evans from Coventry. Mrs Jessica Campbell from Leamington Spa.

Lucy Lawrence & Ace L Christine Thomas from Northampton * Helen Hinchliffe from Derby. Mrs Florence Ravenhall from Rugby.

Richard Little & Nacho LxL Nick Dutson from Southam * Miss Tamsin Armstrong from Warwick

Susan Nicholls & Queenie LxGR Catherine O'Reilly from Solihull * Shirley Thomas from Daventry. Mrs Barbara Stone from Kenilworth. Mrs Geraldine Barrott from Leamington Spa.

Carole Vincent & Isla LxGR Ann Gardner from Retford, Michael Price from

Whisby * Fiona Reedy from Evesham. Mrs Barbara Stone from Kenilworth. Miss Hannah Finch from Leamington Spa.

Bristol

Keith Barrett & Basil GRxGSD Eric Booth from Bristol * Sarah Lay from Solihull. Ms Lynn Templar from Bristol.

Dorothy Bly & Geoffrey GRxGR Joanna Hughes from Shrewsbury * Tracy Inman from Coventry. Mr Dave Love from Bolton.

Beverley Ford & Hazy L Ann Moore from Tiverton * Claire Cobbold from Leamington Spa. Ms Jannette Toomey from Bristol.

Donna Livoti-Green & Trudy LxGR Alison Foxell from Marlborough * Susan Griffiths from Derby. Miss Anna Horton from Bristol.

Andrew Pemberton & Hicks L Ann-Marie Lever from Blackpool, Richard Sewell from Lancaster

* Rachel Bagley from Coventry. Mrs Elizabeth Holding from Tewkesbury. Ms Wendy Jackson from Leigh. Mrs Margaret Hawes from Bristol.

Lesley Sayers & Jim GRxL Leonard Danter from Bridgend * Mrs Emma Folkes from Bristol. Mr Richard Barnett from Cheddar.

Anica Zeyen & Maisie CCRxL Joanna Wareham from Clevedon * Claire Davis from Warwick. Mr Adam Fincham from Leamington Spa.

Cardiff

Jordan Allen & Lily LxGR Garry Holmes from Frome * Pamela Nash from Northampton. Ms Beverley Smith from Cardiff.

Zena Cooper & Stevie GR Linda Statts from Neath * Julian Graeme Paynton from Newbold On Stour. Mrs Louise Neill from Alcester. Mr Wing Sang Poon from Cardiff.

Davina Davies & Crindau GRxL Julie Brooks from Monmouth * Lisa Bird from Stratford-upon-Avon. Mr Paul Black from Solihull. Mr Neil Parke from Cardiff.

Mansel Griffiths & Digby GRxGR Sue Arthur from Cheltenham * Donna Kennedy from Woodstock. Miss Hannah Griffiths from Cardiff.

Francesca Hodges & Tom L * Diane Fowkes from Nuneaton. Dr Sharon Paynter from Cardiff.

Phillip Jones & Rodney GRxL Anthony Cadwallader from Pontyclun * Mrs Rhian Howells from Cardiff.

Richard Llewelyn & Rookie GRxGR Isobel Cooper from Bristol * Carolyn Smith from Leamington Spa. Ms Esther Holmes from Meriden. Miss Maddy O'Neill from Cardiff.

Elin Owen & Derek L Malcolm Tyler from Beaminster, Sara Scofield from Dorchester * Claire Cobbold from Leamington Spa. Miss Megan Stone from Newport.

Ruth Pritchard & Donnaie L Anne Parham from Minehead, Alison Kent from Taunton * Mr Jeff Evans from Hengoed.

Brian Thomas & Emmi GRxL Teresa Owens from Looe, Sarah Faux from Poole * Paul Bissell from Cirencester. Mrs Louise Millard from Lutterworth. Mrs Tracey Lane from Cardiff.

Michael Wibberley & Juno L Kimberley Turner-Lashmar from Mountain Ash * Miss Catherine Evans from Cardiff.

Andrew Windsor & Lilly L Sheelagh Kerry from Abergavenny * Mary Smith from Moreton-in-Marsh. Mr Stephen Sims from Hengoed.

Kathleen Woodward & Evita STPxL Michele Crane from Bridport * Gail Winnett from Birmingham. Mrs Melissa Morgan from Cardiff.

Coventry

David Beardwood & Juno L * Catherine Gray from Brackley. Mr Doug Harrower from Bedworth.

Lydia Church & Forest L Christine Einton from Stratford-upon-Avon * Amy Martin from Rugby. Mrs Nonie Toogood from Leamington Spa. Miss Emma Roberts from Warwick.

Tessa Dickson & Lando L Christine Cummins from Buckingham, Joanne Emery from Peterborough, Karen Bryant from Huntingdon, Myriam Steadman from Manea * Steve Giles from Leicester. Mrs Natalie Jarvis from Leamington Spa.

Bethany & Jenny L Diane Withers from Lichfield * Mrs Ruth Charsley from Leamington Spa.

Sue Pallett & Frankie GRxGR Myriam Steadman

from Manea * Katie Harris from Redditch. Mr Richard McCaughan from Leamington Spa.

Stephen Parnell & Milly L Donna Lenton from Worcester * Glynis Nixon from Warwick. Miss Rachel Ashley from Nuneaton. Ms Kamal Dhesi from Warwick.

Lorna Patrick & Tobin GRxL Joanne Barrett from Markfield * Lyn Bushell from Daventry. Mr & Mrs Graham and Sandra Jeffrey from Ashby De La Zouch. Ms Elizabeth Norton from Warwick.

Caroline Skinner & Donny GRxL Becca Taylor from Loughborough * Sarah Kite from Birmingham. Mr Markus Backman from Warwick. Mrs Jenny Gibson from Southam.

Amy Smith & Freddie GRxL Steve Woodworth from Northampton

East Scotland

Niall Hunter & Hebden L Hazel Norrie from St Andrews * Joanne Weaver from Redditch. Miss Jenni Small from Forfar.

Mary Tedford & Stevie GRxL Laurie Matthew from Perth * Margaret Reynolds from Rugby. Mrs Sally Sleath from Warwick. Mrs Claire McDiarmid from Forfar

East Scotland Academy

Anne Brown & Tess LxGR Susan Waddell from Falkirk * Mr Ian Crewe from Nuneaton. Miss Siobhan Christie from Dundee. Murray Jenkinson & Kit L Deborah Sampson from Dundee * Becky Robertson from Banbury.

Dorothy Twyman & Tilly LxGR Pauline Viercant from Belton * Caroline Clifton from Henley-in-Arden. Mrs Barbara Stone from Kenilworth.

Edinburgh

Jane Dumayne & Baden GRxGR Lorna Gamble from Dunfermline * Sarah Absolom from Milton Keynes. Mr Richard Edge from Flyford Flavell. Miss Stephanie Young from Dundee.

Lois Mair & Yana GRxL Anita Cull-Roy from Oxtown * Jessica Macgregor from Banbury. Mr Michael Rudge from Solihull. Miss Joanne Mallett from St. Helens.

Fiona Platten & Ellis GR Jordan Allan from Edinburgh, Sheila Wilson from Dunbar * Dawn Parsons from Wallingford. Mrs Laura Fields from Blairgowrie.

Garry Ritchie & Chesney L Carol Scobbie from Falkirk * Lisa Hunt from Stratford-upon-Avon.

Eric Thomson & Barney LxGR Catriona Rose from Edinburgh * Curtis Huntson from Redditch. Mrs Tricia Collier from Warwick. Mrs Maria Wiseman from Forfar.

Exeter

Scott Dando & Tess GRxGR Amanda Griffiths from Newton Abbot * Lyn Brehaut from Worcester.

Keith Francis & June L Martha Jones from Exeter, Fraser Hall from Exeter * Glynis Nixon from Warwick. Miss Rachel Ashley from Nuneaton. Mr Darren Howard from Honiton.

Brian Letten & Finnegan L Susan Rounsley from Bristol, Rhianne Dorsett from Bridgwater * Pauline Macpherson from Stratford-upon-Avon. Mr Ian Crewe from Nuneaton. Miss Rhianne Dorsett from Bridgwater. Faye Gardner from Highbridge.

Joanne Lock & Lucy LxGR Lisa Fellows-Patel from Bath * Sandra Cox

from Marlow. Ms Clara Turner from Exeter.

Samantha Morris & Beatrice L Victoria Welsh from Chippenham * Annette Rand from Rugby. Mrs Gail Johnson from Warwick.

Anthony Quant & Gromet L Barry Reeves from Newton Abbot, Jayne Doak from Newquay, Margaret Vanes from Paignton * Ms Camilla Barrow from Dawlish.

Exeter Academy

Jolly Brimble & Della GRxGR Nigel Hall from Yelverton * Lyn Brehaut from Worcester. Ms Chui Fan Lee from Exeter.

Margaret Tregale & Gale GRxGR Christopher Staite from Bristol, Ruth Hall from Martock * Katie Harris from Redditch. Mrs Martine Palmer from Exeter.

Glasgow

Caroline Barnes & Kiwi GRxL Patricia Wilkinson from Inverkeithing, Evelyn Henderson from Kelty * Mr & Mrs Wetherell from Birmingham. Mrs Lesley Wilson from Forfar.

Jonathan Cavan & Quiz L Mary Graham from Bo'ness * Mrs Claire Brown from Kirriemuir.

Adrienne Chalmers & Yazz GRxL Jennifer Taylor from Ellon * Jessica Macgregor from Banbury. Mr Michael Rudge from Solihull. Mrs Kerry Walker from Montrose. Mrs Shirley Stewart from Forfar.

Jon Fordham & Reeves LxGR Dorianne Butler from Malton, Julie Marshall from Selby * Caroline Clifton from Henley-in-Arden. Mrs Barbara Stone from Kenilworth.

John Long & Upton GRxL Ronald Ferguson from Glenrothes * Samantha Hanley from Telford. Mr Christopher Osborne from Forfar.

Margaret Murphy & Sophie STPxL June Lochhead from Newton Stewart * Kat Bray from Swadlincote. Mrs Linda Landsberg from Milton Keynes. Mrs Sally McLean from Forfar.

Rubina Shah & Sade GRxL Chris Rogerson from Sunderland * Terry Crane from Kidlington. Mrs Louise Millard from Lutterworth. Mrs Kelly Clark from Glasgow.

Stewart White & Ginny LxGR Allan O'Brien from Hartlepool * Michael Jones from Leicester. Miss Katherine Gunn from Leamington Spa. Mrs Michele Clark from Hartlepool. Miss Hannah Duncan from Leeds.

Michelle Young & Paris GRxL Lorraine Reid from Motherwell * Sarah Kite from Birmingham. Mrs Mhari Greenwood from Hamilton.

Hull

Sarah Bennett & Dege GR Maureen Kinnear from Ripon, Jenny Dixon from Wetherby * Lynne De Melo from Stoughton. Mrs Natalie Hamilton from Mexborough.

Gail Dean & Wheat L Jorja Gill from Sheffield, Emma Lovell from Mexborough * Karen Rankin from Leamington Spa. Miss Rachel Ashley from Nuneaton. Miss Jessica Parker from Leeds. Mrs Anne Procter from Beverley.

Janice Gregory & Pepi GRxL Colin Laird from Kilsyth, Andrew Kemp from Glasgow * Mrs Katherine Pattullo from Forfar.

Leeds

Edward Brodie & Swift LxGR Mandy Hodgson from Hull * Fiona Reedy from Evesham. Mrs Barbara Stone from

Kenilworth. Mrs Sara Gamzo-Letova from Leeds.

Maria Chapman & Edison GR Katryna Barrow from Woking * Julian Graeme Paynton from Newbold on Stour. Mrs Louise Neill from Alcester. Miss Lyndsey Holmes from Leeds.

Nathan Major-Kershaw & Jackson GRxL Margaret Robertson from Edinburgh, Sarah Fearon from Edinburgh * Natalie Griffith from Warwick. Miss Jenna Ogilvie from Brechin. Mrs Katy Wan from Leeds.

Liverpool

Neil Balmforth & Rainbow LxGR Rwth Sloan from Cheadle * Philip Maycock from Bromsgrove. Mrs Barbara Stone from Kenilworth. Mrs Caroline Wilson from Manchester. Mr & Mrs John & Anne Starr from Wigan. Mrs Joanne Wolstencroft from Bolton.

Raymond Clements & Garson STPxL Susan Walsh from Burnley, Pernelle Yates from Preston * Gail Winnett from Birmingham. Miss Sarah Anwyl from Liverpool.

David Ellingham & Anne L Cath Rylance from Rossendale * Gillian Parsons from Leamington Spa. Mrs Shirley Jukes from Wigan. Mrs Georgia Harris-Bond from Liverpool.

Thomas Sweeney & Captain GRxL Simon Hey from Shrewsbury * Ms Leela Cubillo from Lichfield. Miss Laura Woodward from Westhoughton.

London

Justin Cunningham & Cooper LxGR Gordon Dodd from Sittingbourne * Mrs Heather Redman from Maidstone.

Antonio Da Mota & Pirate L Chris Armstrong from Twickenham * Mr Eric Chaline from London.

John Dickinson-Lilley &



Percy GRxGR Stephanie McKay from Ashford * Mrs Louise Neill from Alcester. Ms Veronica Rechten from London.

Robert Keller & Kered L Lesley Thomas from Sidcup * Ms Karen Heaton from London.

Poppy Levison & Summer GRxL Genevieve Donlon from Rossendale, Jackie Lancaster from Burnley * Margaret Reynolds from Rugby. Mrs Sally Sleath from Warwick. Mrs Victoria McNamara from Atherton. Mrs Cerian Maraviglia from London.

Jo-Ann Moran & Nikki LxGR Margaret Sullivan from Upminster * Fiona Reedy from Evesham. Mrs Barbara Stone from Kenilworth. Mrs Angie Schooling from Waltham Abbey.

Kevin O'Flaherty & Darcy LxGR John Harrison from Hemel Hempstead * Shirley Thomas from Daventry. Mrs Barbara Stone from Kenilworth. Miss Kirsten Dent from Woodford Green. Mr Terry Lynch from Loughton.

Fiona Seager & Yoyo GRxGR Diane Page from Clacton-on-Sea * Mrs Louise Neill from Alcester. Mrs Sharon D'Cruz from London.

Maidstone

David Cheshire & Mason GRxGSD * Lorna Morgan from Birmingham. Mr Paul Black from Solihull.

Brian Cholerton & Rory L Jeanette Bau-Mann from Romford * Catherine Gray from Brackley. Mr Doug Harrower from Bedworth. Dr Caroline McGlynn from Ilford. Mrs Lorraine London from Hove.

Dale Holmes & Brandy L Peter Sewell from Hythe * Pauline Macpherson from Stratford-upon-Avon. Mr Ian Crewe from

Nuneaton. Mr Brian Davies from Maidstone.

Graham Lowe & Thorn L Sarah Gadhavi from Worcester Park * Mr Tony Mundella from Maidstone.

Margaret Murray-Rowe & Trudy GRxL David Yale from Gillingham * Trudy Evans from Coventry. Mr Adrian Claxton from Warwick. Mr Hunter Ingram from Aylesford.

Nim Thorp & Ivan GRxL Barry Waterfield from Romford * Hilary Cooke from Bromsgrove. Mrs Samantha Whitman from Woodford Green. Miss Dawn O'Leary from Rochester.

Janet Tuggey & Frankie GRxGR Karen Meeson from St Leonards-on-Sea.

Manchester

Janet Atkinson & Brie LxGR Margaret Campbell from Oldham.

Gemma Bell & Lailah GRxGSD * Lorna Morgan from Birmingham. Mr Paul Black from Solihull. Mrs Tracey Rodriguez from Chorley.

Lauren Ellis & Sofi GRxGR Nicola Rollinson from Wirral, Rosemary Legg from Ellesmere Port * Hayley Kerfoot from Stourbridge.

Marie Howarth & Charlie L Sandra Cooke from Ellesmere Port * Natalie Byrne from Solihull. Mr James Ramsey from Bolton.

Lydia Hulme & Webster L John Woodward from Lymm * Maureen Ross from Redditch. Mrs Tricia Collier from Warwick. Mrs Lynn Soper from Bolton.

Mary Leigh & Monica GRxL * Carol Miles from Hinckley. Mrs Victoria McNamara from Atherton.

Jennifer Masters & Brian GRxL Jane Shaw from Knutsford * Carol Miles from Hinckley. Mrs Lisa

Morgan from Manchester.

David Morton & Hunter L Cara Moulton from Chepstow * Amy Martin from Rugby. Mrs Nonie Toogood from Leamington Spa. Mrs Amanda Ogden from Bolton.

Michael Morton & Poppy CCRxL Keith Sandham from Clitheroe, Catherine Bradley from Blackpool, Nicholas Wells from Lytham St Annes * Claire Davis from Warwick. Mr Adam Fincham from Leamington Spa. Mr Paul Clare from Manchester.

Elvis Michael Presley & Nigel L Alan Miller from Aberporth * Lisa Hunt from Stratford-upon-Avon.

Manchester Academy

Les Davidge & Maxwell GSD Nicola Northover from Liverpool * Tanya Campbell from Chipping Campden. Mr David Crook from Wigan.

Marie Powell & Rupert GR Lisa Davenport from Stockport * Mrs Heather Larkin from Warrington.

Carolyn Wilcock & Reese L Corinne Flint from Altrincham * Rachel Bagley from Coventry. Mrs Elizabeth Holding from Tewkesbury. Mrs Elaine Dolan from Bolton.

Newcastle

Gavin Atkins & Euston L David Langton from Banchory * Mr Brian Eatough from Blairgowrie.

Richard Boggie & Marcus L Robert Kirk from Irvine * Elizabeth Tovey from Coventry. Miss Susan Deuchars from Dundee.

Alistair Chisholm & Umber GRxL Mark Eskriett from Hull * Anne Baulch from Daventry. Ms Patricia Andreu from Newcastle upon Tyne. Stephen Falp & Barker

LxGR Wigen Nazarov from Carnoustie * Caroline Clifton from Henley-in-Arden. Mrs Barbara Stone from Kenilworth. Mrs Jennifer Lovegrove from Forfar.

Chloë Hesse & Omega L Shawn Fenwick from Ashington * Mrs Elaine Wilson from Kirriemuir.

Paul Hotchkiss & Rocco GRxL Ross Hamilton from Glasgow * Margaret Reynolds from Rugby. Mrs Louise Millard from Lutterworth. Miss Alison Glen from Forfar.

Karen Mallett & Rob GRxL Marian Boyden from Richmond * Lynn Dignan from Rugby. Mr Richard Edge from Flyford Flavell.

Lindsey Smith & Carter GRxL * Jack Visser from Redditch. Mrs Sarah Hodgson from Bedlington.

Nicola Smith & Maddox LxGR Angus Reid from Dundee * Caroline Clifton from Henley-in-Arden. Mrs Barbara Stone from Kenilworth. Mrs Gemma Easson from Forfar.

Paul Whiting & Django GRxL Heather Lynch from Dundee * Ms Leela Cubillo from Lichfield. Mrs Susan Irvine from Forfar.

Emily Wood & Pearl GRxL Ann Hutchison from Ayr * Lynn Dignan from Rugby. Mr Richard Edge from Flyford Flavell. Mrs Jennifer Henderson from Forfar.

Adrian Woods & Sandy LxGR Joan Williams from Prudhoe * Michael Jones from Leicester. Miss Katherine Gunn from Leamington Spa.

Nottingham

Nicholas Bennett & Archie LxGR Naomi Maguire from Lincoln * Clare Jones from Northampton. Miss Rachel Ashley from Nuneaton. Miss Natasha Phillipson from Nottingham.

Janet Broad & Alison GRxL Teresa Morgan from Nottingham * Rachel Payton from Warwick. Ms Amela Bogdanovic from Leamington Spa.

Lynne Buckley & Samira GRxGSD Liz Levis from Leamington Spa, Ellen Holt from Tewkesbury * Sharon Pogson from Bromsgrove. Mr Paul Black from Solihull. Mr Christopher Watts from Warwick.

Sameira Keshmiri & Rose L Cecilia Lane from Kenilworth, Susan Ball from Birmingham * Mrs Anne Cadwallader from Southam. Mrs Susan Maddock from Nottingham.

Philip Simpson & Buddy LxGR Daphne Norridge from Lincoln * Rosemary Fox from Leamington Spa. Mrs Barbara Stone from Kenilworth. Mrs Cindy Wilson from Nottingham.

Marc Surman & Ben LxGR Janet Fentiman from Pershore * Shirley Thomas from Daventry. Mrs Barbara Stone from Kenilworth. Mrs Debra Carew from Kenilworth. Mrs Angela Henson from Nottingham.

Teresa Waldron & Cherry GR Vanessa Pellow from Warwick * Jackie Henderson from Moreton-in-Marsh. Mr Michael Rudge from Solihull. Mrs Mirren Smith from Leamington Spa.

Melvin John Youngs & Rowley GRxL Yasmein Akhtar from Birmingham, Kathryn Simpson from Alfreton, Julie Foster from Worksop * Lisa Bird from Stratford-upon-Avon. Mr Paul Black from Solihull. Mr David Kelsall from Warwick. Miss Wendy Timothy from Ripley.

Nottingham Academy

Charles Danby & Oscar GRxGR Sarah Hartley from Banbury * Mrs Louise Neill

from Alcester. Miss Lois Brown from Warwick. Miss Gemma Dyer from Ilkeston.

David C Mann & Duke L Daniel Chrystal from Nottingham, David Humphries from Nottingham * Irene Scott from Warwick. Mrs Gill Weeks from Leamington Spa.

Matthew Ryan-Tennyson & Bonny LxGR Jane McPhilbin from Nottingham * Louise Maw from Bicester. Miss Katherine Gunn from Leamington Spa. Mr Karl Elliott from Warwick. Ms Liz Leck from Kenilworth.

Peterborough

Darryl Andrews & Indris L Mary Clare Gutteridge from Birmingham * Mr Timothy Blundell from Leamington Spa.

Rebecca Atkinson & Titch LxGR Angela Ferguson from Coalville * Miss Rachel Strudwick from Leamington Spa.

Paul Brown & Marti LxGR Taylor Kenny from Milton Keynes, Laura Baker from Coventry * Jane Ekins from Leamington Spa. Mr Karl Nesbitt from Leamington Spa.

Nicholas Burr & Ron GRxGSD Patricia Fullen from Lincoln * Jennifer Lanham from Cheltenham. Mr Andrew Campbell from Warwick.

Celia Carter & Ben L Nuala Gillespie from Bromsgrove * Gillian Parsons from Leamington Spa. Miss Lesley Coombs from Leamington Spa. Mr Anthony Miles from Kettering.

Simon Daws & Colin GRxGR Toni Brindley from Sutton Coldfield * Lyn Brehaut from Worcester. Mrs Catherine Thomson from Rugby.

Michael Hunt & Alfie L David McConnell from Solihull * Rachel Bagley from

Coventry. Mrs Elizabeth Holding from Tewkesbury. Miss Lesley Coombs from Leamington Spa.

Johnny Nastri & Kelly STPxL Jean Howell from Bicester * Gail Winnett from Birmingham. Miss Leah McFadden from Southam.

Linda Parsons & Chester LxGR Paul Monaghan from Nottingham * Louise Maw from Bicester. Miss Katherine Gunn from Leamington Spa.

Caroline Pryke & Arleigh CCRxL Susan McCulloch-Marshall from Shipston-on-Stour * Claire Davis from Warwick. Mr Adam Fincham from Leamington Spa. Miss Dominique Saveker-Hughes from Leamington Spa.

Mick Scadden & Astra L Carole Newbery from Sutton Coldfield * Glynis Nixon from Warwick. Miss Rachel Ashley from Nuneaton. Mrs Amber Preston from Warwick.

Emma Wedge & Sinbad GRxGSD Emma Pollard from Rugby * Sarah Lay from Solihull. Mrs Laura Gimes from Leamington Spa.

Susan Wright & Birdie L Nigel Garnham from Kirstead * Suzanna Adey from Derby. Mrs Dulcie Parry from Rugby. Mr Darren Love from Warwick.

Yijing Zhang & Amber L Lynn Page from Rushden * Helen Hinchliffe from Derby. Miss Eleanor Jeffries from Warwick.

Reading

Fiona Corby & Jessie L Gillian Openshaw from Leigh * Mrs Dulcie Parry from Rugby. Mr Malcolm Whitaker from Reading.

Sally Davies & Sora GRxL Keith Warriner from Twickenham * Ms Jessica Janes from Reading.

Stephen Hipkin & Winter GRxGR Robert Lyon from London * Lyn Brehaut from Worcester. Dr Steven West from Newbury.

Redbridge

Ian Kennedy & Alpha GSD Susan Franz from Cranbrook * Sharon Faulkner from Coventry



Shrewsbury

Mark Griffiths & Ryan LxGR
Alison Cooke from Wirral

* Philip Maycock from
Bromsgrove. Mrs Barbara
Stone from Kenilworth. Mrs
Dawn Smith from Liverpool.
Miss Hollie Williams from
Shrewsbury. Mrs Frith
Jones from Shrewsbury.

Sarah Oattes & Jeffrey
GRxL Dawn Hickman
from Bilston * Margaret
Reynolds from Rugby.
Mrs Sally Sleath from
Warwick. Mr Bruce
Bethune from Shrewsbury.

Carol Sadler & Melanie
GRxGSD Dee Alexa Taylor
from Kendal * Jennifer
Lanham from Cheltenham.
Mr Christopher Pike
from Shrewsbury. Mrs
Joanna Bromwich
from Shrewsbury.

David Satchell & Cassy
LxGR Lynn Mitton
from Burnley * Sandra
Boden from Rugeley.
Mrs Samantha Watton
from Shrewsbury.

Alex Taylor & Olsie L Sue
Jay from Burntwood *
Joanne Weaver from
Redditch. Mrs Louisa
Dargan from Shrewsbury.

Shrewsbury Academy

Patricia Lacey & Harper
LxGR Madge Nightingale
from Birmingham,
Annette Warrington
from Shenstone * Brenda
Thomson from Sutton
Coldfield. Miss Claire
Deacon from Shrewsbury.

Southampton

Wendy Allwood & Jinty
L Julia Brown from
Dorchester * Mr Clive
Dunmore from Verwood.

Eva Klamar & Dougie
GRxGR Kelly Ducker from
Eastleigh * Hayley Kerfoot
from Stourbridge. Mrs Kelly
Niccolls from Southampton.

Aron Mallows & Perkins
LxGR Lisa McEvoy from
Salisbury * Shirley
Thomas from Daventry.

Mrs Barbara Stone from
Kenilworth. Mrs Maire
Sewell from Eastleigh.

Eric Tuckwell & Almond
GSD Paula Carr from
Dursley * Trudy Evans
from Coventry. Mrs Grace
Ridealgh from Verwood.

Richard Twose & Harry
L Daisy Dutton from
Preston * Jane Adams
from Rugby. Mrs Kara
Jones from Altrincham.
Mrs Vicky Kelly from Wigan.
Mrs Prisca Mascarenhas
from Southampton.

Welwyn Garden City

Matthew Claridge &
Primrose GR Debbie
Vandervelden from
Benfleet * Leigh Court
from Balsall Common. Mrs
Sarah Byrne from Banbury.

Rita Fisher & Belle L *
Charlotte Knox-Wright
from Hook. Mrs Barbara
Stone from Kenilworth. Mrs
Lisa Batashvili from Epping.

George Hogman & Stanton
L Katie Washford from

Tenterden * Mr Alan
Lowe from Coventry. Ms
Rita Patel from Ilford.

Emma McCrossan &
Terence GRxL Matteo
Di Niro from Bedford.

Phil Mitchell & Imber
L Karen Heaton from
London * Christina
Sibbald from Wantage.
Mrs Elaine Barker from
Leamington Spa. Mr
Matthew Celentano
from London. Mrs Jean
Jones from Billericay.

Michael Smith & Jacob
GRxGSD Sally Hesketh
from St Albans * Sarah
Lay from Solihull

West Scotland

Derek Howie & Jenkins
L Linda McDonald from
Larbert * Mr Hugh Brown
from Coventry. Mrs Fiona
McCrae from Forfar.



I'm dunwalkin', now I'm reconnectin', did we land on your doorstep?

In 2006, my former partner and I, with our faithful hound Havoc, set off from John O'Groats to begin walking Britain's coastline. We raised more than £25,000 for Guide Dogs and it took 11 months, walking 15-20 miles per day, carrying a tent and covering more than 5,000 miles in total. Quite an odyssey!

I'd love to reconnect with the supporters and volunteers we met en route. These people provided shelter at times, fed us, encouraged us and donated to Guide Dogs. When asked "which was your favourite bit of the walk?", my reply is the kindness, generosity and assistance shown to us around the UK. Everyone we met was fantastic, but unfortunately I have lost all their contact



details and, all these years later, I would like to thank them once again for their help.

I would like to appeal to any Forward readers we met, or to anyone who would like to know more about our walk, to visit the website www.DunWalkinBook.online where there are contact details, or call the Forward team on **0118 354 0492**.

Please do not hesitate to get in touch.
Paul Barber

Caption Competition

Black Labrador guide dog Sadie met her robot counterpart, Robbie, at an inclusive design conference in Scotland earlier this year. Sadie's owner, Ruby Shah, attended the conference as she's part of Guide Dogs' Assistive Technology team.



What would you caption this photo?

Send your suggestions to: Forward, Communications Team, Guide Dogs, Hillfields, Burghfield Common, Reading, RG7 3YG or email forward@guidedogs.org.uk with your name, address and a daytime phone number. The winner gets a £10 Marks and Spencer voucher.

The last competition winner is Miles Ramsden from near Oakham in Rutland, with the caption "I'm GOING to be a celebrity, get me out of here!" Congratulations, Miles!



Competition rules: Open to UK residents only, excluding Guide Dogs for the Blind Association staff, their families and anyone connected with the competition. No purchase necessary. Proof of posting isn't proof of delivery; no liability accepted for lost, delayed, mislaid or damaged entries. Illegible entries disqualified; one original entry per envelope. Winners notified by phone/email and named in the next issue; they must consent to publication of their name. Editor's decision is final, no correspondence will be entered into. Entry implies acceptance of these rules. Closing date: 31 August 2025.

People's Postcode Lottery awards Guide Dogs £2million in support, reaching a £10million funding milestone

The best partnerships are built on solid foundations. What People's Postcode Lottery and Guide Dogs have built together across the last seven years of collaboration is a fantastic success story.

Earlier this year, People's Postcode Lottery awarded Guide Dogs £2million in funding to support this charity's Academy throughout 2025. What's more, People's Postcode Lottery's latest gift has taken the amount raised by players and donated to Guide Dogs to an amazing £10million.

Players of People's Postcode Lottery have supported multiple aspects of this charity's work since 2018. For the last three years, they have funded and followed the journeys of our life-changing puppies from birth into the early stages of training, and also all the incredible dogs, staff and volunteers who were part of that journey.

Meanwhile, Guide Dogs' Academy has transformed our approach to recruiting, developing and retaining the expert staff at the core of our guide dog service (and you can find out more about them on page 20). Last year, Academy recruits trained 76 guide dog partnerships, making a significant contribution to our 2024 total of 518 new partnerships.

This year, the £2million of funding from People's Postcode Lottery will allow our Academy to continue to support trainees and recruit new ones, future-proofing the guide dog service as player-funded trainees will help to create hundreds, if not thousands, of life-changing partnerships during their careers. The donation will also enable our Academy to expand its remit to provide opportunities for professional development for all the staff who work on the guide dog service.

Funding through partnerships such as People's Postcode Lottery is vital to Guide

Supported by players of



Awarded funds from



Dogs, allowing us to scale up our training and development facilities, which in turn helps us to use what we learn across all areas of the organisation. It's an exciting time and we're looking at where else we can apply the expertise nurtured within our Academy.

People's Postcode Lottery will be the very first corporate partner in Guide Dogs' history to part-fund every stage of the guide dog journey. We would like to express our heartfelt gratitude and appreciation for the support we've received from People's Postcode Lottery over the years.





GIVEACAR

CAR DONATION SERVICE

DONATE YOUR CAR

FAST | FREE | FOR CHARITY

DONATE YOUR CAR IN 3 EASY STEPS

STEP 1



Fill out our donation form on our **website or call us** to submit your details and choose a charity

STEP 2



We'll determine the best option for your vehicle and arrange **free collection**

STEP 3



You'll receive a receipt from us letting you know how much your car **raised for your charity**

We offer free
nationwide
collection

Free Collection | Any Car | Nationwide

Contact us to find out more

0207 736 4242

giveacar.co.uk

In support of:

