

Berry

GUIDE
DOGS



Pupdate 3

New adventures

Preparing for early training

**SPONSOR
A PUPPY**





Hello, it's Sylvia and Michael, Berry's Puppy Walkers. Berry will be off to early training soon and we are excited to update you on how we've been preparing.

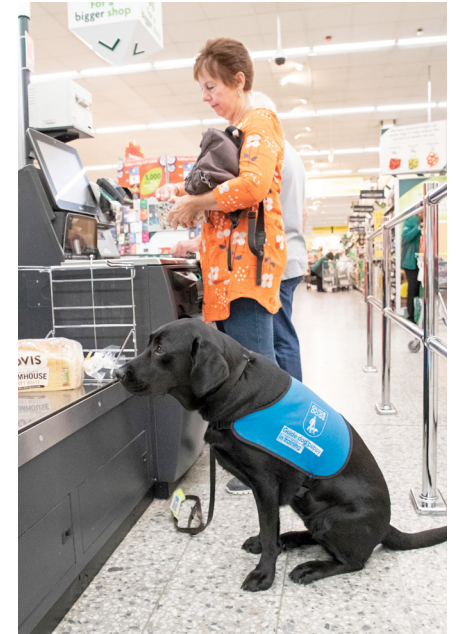
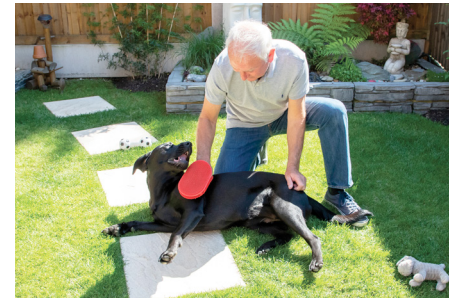
Berry is such a laid back and calm puppy and has never failed to make us laugh. Over the summer we found out that she doesn't like water very much; she would be very curious about the garden hose but as soon as

the water touched her she would shake it off!

Preparing for early training

Berry has made great progress in her basic training, which means she is in the perfect position to begin early training very soon. One command we have been practicing specifically is 'stand and stay', as she often likes to 'sit and stay' instead so we've been teaching her to listen to what command is being asked. The 'stand and stay' skill is an important one because it can be used by her future owner when they are putting on her harness.

We've also been getting Berry used to being handled, such as drying her with a towel, looking at her teeth and grooming her.



Getting her familiar with these tasks will be hugely beneficial to her future owner, as it will be easier for them to health check her to make sure she is happy and healthy. She has been doing very well with this, but is very cheeky and likes to try and chew on the brush when we groom her!

I'm pleased to say that Berry's dog distraction has also come on leaps and bounds since her last

Pupdate. When she sees another dog, we call her back to us and ask her to walk by our side, using a treat to help her focus. She has learnt that we are always more interesting!

(Continued overleaf)



New adventures

We have been taking Berry to a variety of new places, including the hospital, where she was a huge hit with all the nurses as you can imagine! We also visited a castle together recently which had lots of wild fowl that we walked through together. Berry coped very well, and walked calmly past the birds. She really takes everything in her stride and we are very proud of her. We are hoping to attend lots more fundraising events together soon to help

raise awareness of Guide Dogs and the amazing work that they do. After a busy day of training, Berry still loves to cuddle up at home with her teddy toy and we absolutely adore her for it!

Thank you for sponsoring Berry. It won't be long before she moves on to early training, where she will learn the next skills she will need to transform the life of a person with sight loss. Look out for your next Pupdate in February to see how she is getting on!

Training – Puppy to qualified guide dog

It takes around 20 months of training to transform a newborn pup into a qualified guide dog.

The pups learn basic commands and are introduced to new surroundings with their Puppy Walker.

They then venture on to early training where they spend about 19 weeks with a Guide Dog Trainer learning the foundation tasks required of a guide dog. For the last 12 weeks they're with a Guide Dogs Mobility Instructor for partnership training to learn specific skills tailored to their owner's specific needs.



Find out more about how we manage and respect your data at **www.guidedogs.org.uk/privacy** or call **freephone 0800 953 0113** to request a printed copy. Please use this number to tell us if you have changed your mind about how we contact you; including telling us that you do not wish to receive occasional direct mail about Guide Dogs.